

Human pro GDF-8 Protein

Cat. No. GDF-HM118



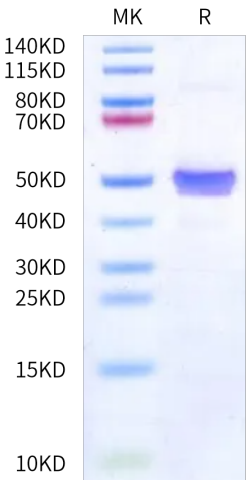
| Description      |   |
|------------------|---|
| Source           | Recombinant Human pro GDF-8 Protein is expressed from HEK293 with His tag at the N-terminus.<br>It contains Asn24-Ser375.           |
| Accession        | O14793  |
| Molecular Weight | The protein has a predicted MW of 41.19 kDa. Due to glycosylation, the protein migrates to 45-55 kDa based on Bis-Tris PAGE result. |
| Endotoxin        | Less than 0.1 EU per µg by the LAL method.  |
| Purity           | > 95% as determined by Bis-Tris PAGE<br>> 95% as determined by HPLC   |

| Formulation and Storage |   |
|-------------------------|---|
| Formulation             | Lyophilized from 0.22 µm filtered solution in PBS (pH 7.4). Normally 8% trehalose is added as protectant before lyophilization.   |
| Reconstitution          | Dissolve the lyophilized protein in distilled water. Please refer to the Certificate of Analysis for detailed instructions.   |
| Storage                 | -20 to -80°C for 12 months as supplied from date of receipt. -80°C for 3 months after reconstitution. Recommend to aliquot the protein into smaller quantities for optimal storage. Please minimize freeze-thaw cycles. |

| Background  |  |
|---|--|
| Growth/differentiation factor 8 (GDF8), or myostatin, negatively regulates muscle mass. GDF8 is held in a latent state through interactions with its N-terminal prodomain. GDF8, like numerous TGF-β family members, is a disulfidelinked dimer that is synthesized as a precursor protein which requires cleavage by a furin-like protease to yield an N-terminal prodomain and a C-terminal mature, signaling domain. |  |

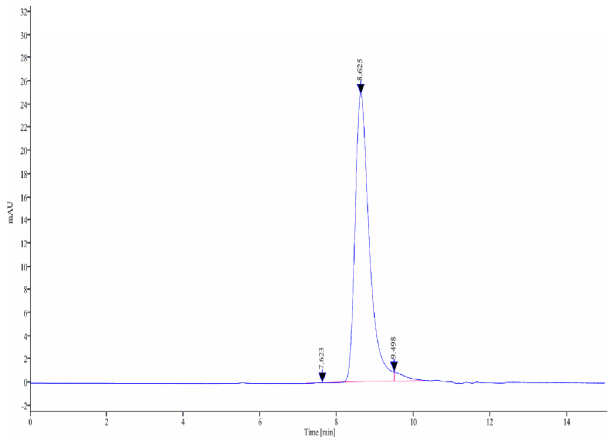
Assay Data

Bis-Tris PAGE



Human pro GDF-8 on Bis-Tris PAGE under reduced condition. The purity is greater than 95%.

SEC-HPLC



The purity of Human pro GDF-8 is greater than 95% as determined by SEC-HPLC.

Human pro GDF-8 Protein

Cat. No. GDF-HM118

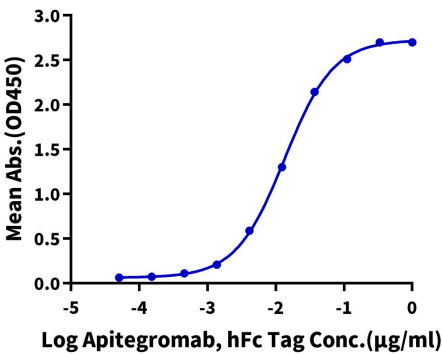


Assay Data

ELISA Data

Human pro GDF-8, His Tag ELISA

0.2µg Human pro GDF-8, His Tag Per Well

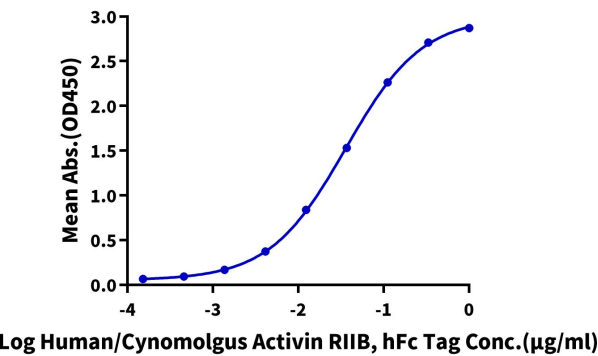


Immobilized Human pro GDF-8, His Tag at 2µg/ml (100µl/well) on the plate. Dose response curve for Apitegromab, hFc Tag with the EC50 of 13.5ng/ml determined by ELISA.

ELISA Data

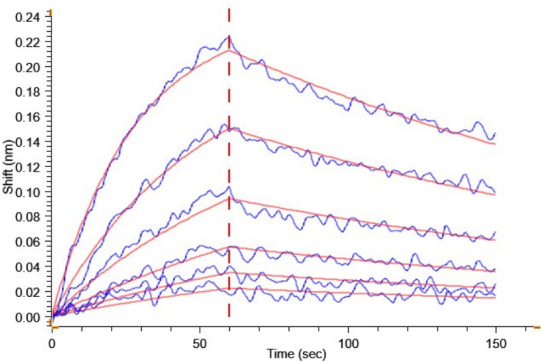
Human pro GDF-8, His Tag ELISA

0.5µg Human pro GDF-8, His Tag Per Well



Immobilized Human pro GDF-8, His Tag at 5µg/ml (100µl/well) on the plate. Dose response curve for Human/Cynomolgus Activin RIIB, hFc Tag with the EC50 of 35.9ng/ml determined by ELISA.

BLI Data



Loaded Apitegromab, hFc Tag on ProA-Biosensor can bind Human pro GDF-8, His Tag with an affinity constant of 25.10nM as determined in BLI assay (Gator® Prime).