

Biotinylated Human GDF15 Protein (Primary Amine Labeling), Ultra Low Endotoxin



Cat. No. GDF-HM215B-UL

Description

Source	Recombinant Biotinylated Human GDF15 Protein (Primary Amine Labeling) is expressed from HEK293 with hFc (IgG1) tag at the N-Terminus. It contains Ala197-Ile308.
Accession	Q99988
Molecular Weight	The protein has a predicted MW of 37.9 kDa. Due to glycosylation, the protein migrates to 40-50 kDa based on Bis-Tris PAGE result.
Endotoxin	Less than 0.01 EU per µg by the LAL method.
Purity	> 95% as determined by Bis-Tris PAGE > 95% as determined by HPLC

Formulation and Storage

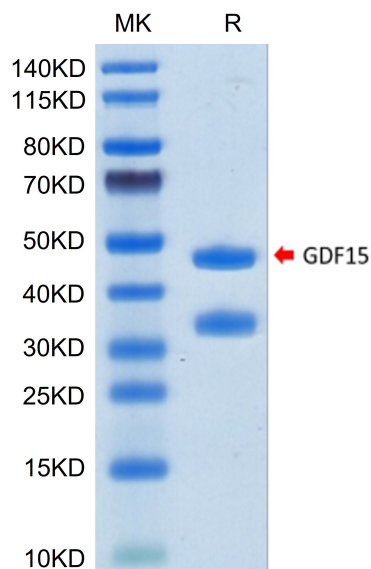
Formulation	Lyophilized from 0.22µm filtered solution in PBS (pH 7.4). Normally 8% trehalose is added as protectant before lyophilization.
Reconstitution	Dissolve the lyophilized protein in distilled water. Please refer to the Certificate of Analysis for detailed instructions.
Storage	-20 to -80°C for 12 months as supplied from date of receipt. -80°C for 3 months after reconstitution. Recommend to aliquot the protein into smaller quantities for optimal storage. Please minimize freeze-thaw cycles.

Background

Growth and differentiation factor 15 (GDF15) is an inflammation-associated hormone with poorly defined biology. Here, we investigated the role of GDF15 in bacterial and viral infections. Inflammation induced GDF15, and that GDF15 was necessary for surviving both bacterial and viral infections, as well as sepsis. The protective effects of GDF15 were largely independent of pathogen control or the magnitude of inflammatory response, suggesting a role in disease tolerance.

Assay Data

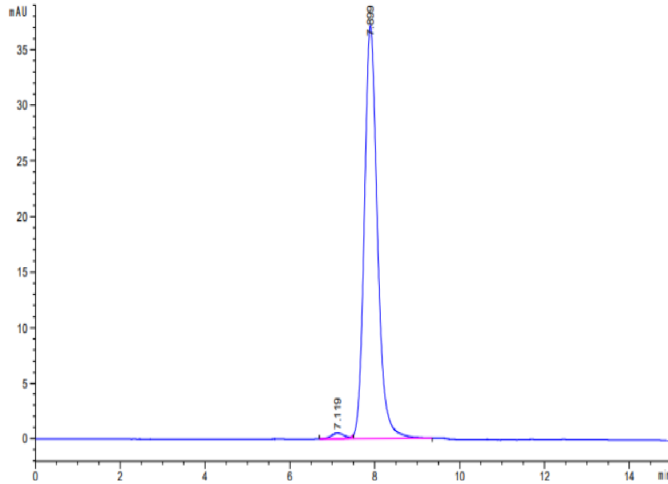
Bis-Tris PAGE



Biotinylated Human GDF15 on Bis-Tris PAGE under reduced condition. The purity is greater than 95%.

SEC-HPLC

Assay Data

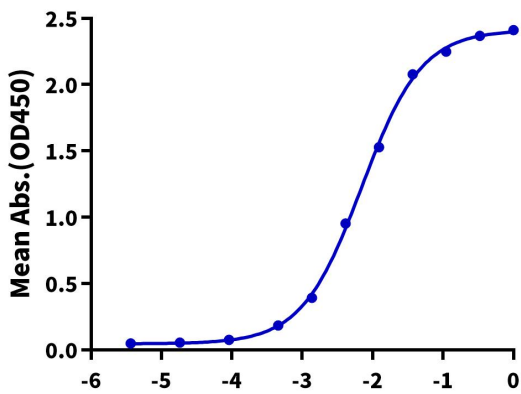


The purity of Biotinylated Human GDF15 is greater than 95% as determined by SEC-HPLC.

ELISA Data

Biotinylated Human GDF15, hFc Tag ELISA

0.05µg Human GFRAL, His Tag Per Well

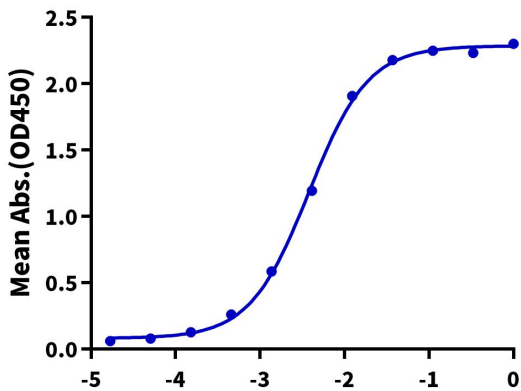


Immobilized Human GFRAL, His Tag at 0.5µg/ml (100µl/Well) on the plate. Dose response curve for Biotinylated Human GDF15, hFc Tag with the EC50 of 7.0ng/ml determined by ELISA.

Log Biotinylated Human GDF15, hFc Tag Conc. (µg/ml)

Biotinylated Human GDF15, hFc Tag ELISA

0.05µg Anti-GDF15 Antibody, hFc Tag Per Well



Immobilized Anti-GDF15 Antibody, hFc Tag at 0.5µg/ml (100µl/well) on the plate. Dose response curve for Biotinylated Human GDF15, hFc Tag with the EC50 of 3.8ng/ml determined by ELISA.

Log Biotinylated Human GDF15, hFc Tag Conc. (µg/ml)