

Human GDF15 Protein

Cat. No. GDF-HM315



Description

Source	Recombinant Human GDF15 Protein is expressed from HEK293 with mFc (IgG2a) tag at the N-Terminus. It contains Ala197-Ile308.
Accession	Q99988
Molecular Weight	The protein has a predicted MW of 37.46 kDa. Due to glycosylation, the protein migrates to 40-50 kDa based on Bis-Tris PAGE result.
Endotoxin	Less than 1EU per µg by the LAL method.
Purity	> 95% as determined by Bis-Tris PAGE > 95% as determined by HPLC

Formulation and Storage

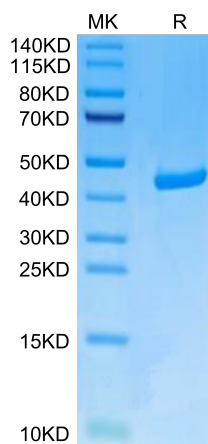
Formulation	Lyophilized from 0.22µm filtered solution in PBS (pH 7.4). Normally 8% trehalose is added as protectant before lyophilization.
Reconstitution	Centrifuge the tube before opening. Reconstituting to a concentration more than 100 µg/ml is recommended. Dissolve the lyophilized protein in distilled water.
Storage	-20 to -80°C for 12 months as supplied from date of receipt. -80°C for 3 months after reconstitution. Recommend to aliquot the protein into smaller quantities for optimal storage. Please minimize freeze-thaw cycles.

Background

Growth Differentiation Factor 15 (GDF15), also known as NSAID activated gene-1 (NAG-1), is associated with a large number of biological processes and diseases, including cancer and obesity. GDF15 is synthesized as pro-GDF15, is dimerized, and is cleaved and secreted into the circulation as a mature dimer GDF15.

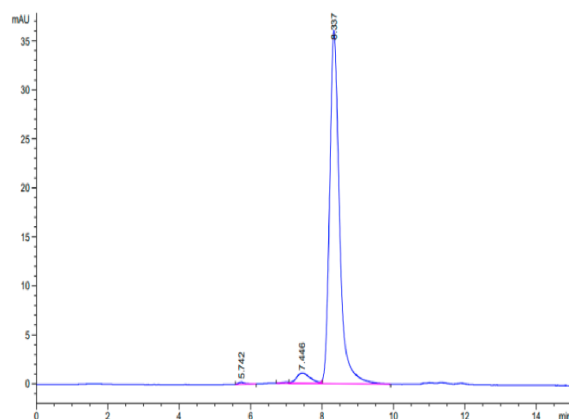
Assay Data

Bis-Tris PAGE



Human GDF15 on Bis-Tris PAGE under reduced condition. The purity is greater than 95%.

SEC-HPLC



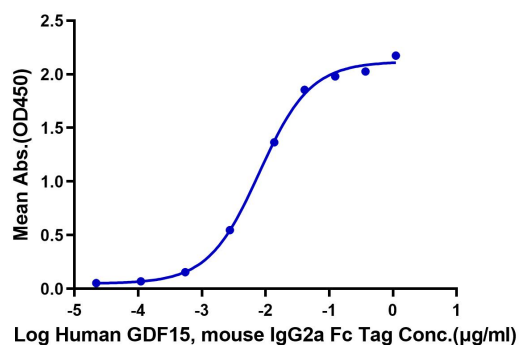
The purity of Human GDF15 is greater than 95% as determined by SEC-HPLC.

Assay Data

ELISA Data

Human GDF15, mouse IgG2a Fc Tag ELISA

0.1µg Human GFRAL, His Tag Per Well

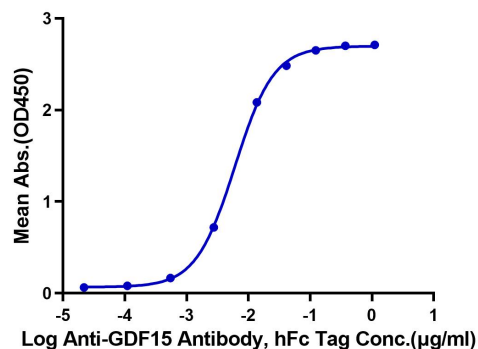


Immobilized Human GFRAL, His Tag at 1µg/ml (100µl/well) on the plate. Dose response curve for Human GDF15, mouse IgG2a Fc Tag with the EC50 of 8.0ng/ml determined by ELISA.

ELISA Data

Human GDF15, mouse IgG2a Fc Tag ELISA

0.05µg Human GDF15, mouse IgG2a Fc Tag Per Well



Immobilized Human GDF15, mouse IgG2a Fc Tag at 0.5µg/ml (100µl/well) on the plate. Dose response curve for Anti-GDF15 Antibody, hFc Tag with the EC50 of 6.0ng/ml determined by ELISA.