

# Mouse Latent GDF-8 Protein

Cat. No. GDF-MM128



## Description

<b>Source</b>	Recombinant Mouse Latent GDF-8 Protein is expressed from HEK293 with His tag at the N-terminus. It contains Asn25-Ser376.
<b>Accession</b>	O08689
<b>Molecular Weight</b>	The protein has a predicted MW of 41.18 kDa. Due to glycosylation, the protein migrates to 14 kDa and 32-38 kDa based on Bis-Tris PAGE result.
<b>Endotoxin</b>	Less than 0.1 EU per µg by the LAL method.
<b>Purity</b>	> 95% as determined by Bis-Tris PAGE > 90% as determined by HPLC

## Formulation and Storage

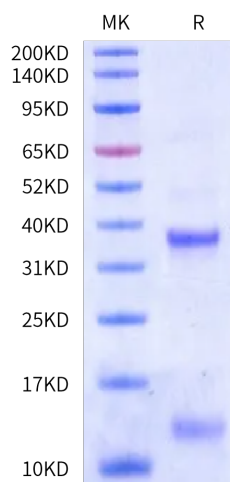
<b>Formulation</b>	Lyophilized from 0.22 µm filtered solution in PBS (pH 7.4). Normally 8% trehalose is added as protectant before lyophilization.
<b>Reconstitution</b>	Dissolve the lyophilized protein in distilled water. Please refer to the Certificate of Analysis for detailed instructions.
<b>Storage</b>	-20 to -80°C for 12 months as supplied from date of receipt. -80°C for 3 months after reconstitution. Recommend to aliquot the protein into smaller quantities for optimal storage. Please minimize freeze-thaw cycles.

## Background

Growth/differentiation factor 8 (GDF8), or myostatin, negatively regulates muscle mass. GDF8 is held in a latent state through interactions with its N-terminal prodomain. GDF8, like numerous TGF-β family members, is a disulfidelinked dimer that is synthesized as a precursor protein which requires cleavage by a furin-like protease to yield an N-terminal prodomain and a C-terminal mature, signaling domain.

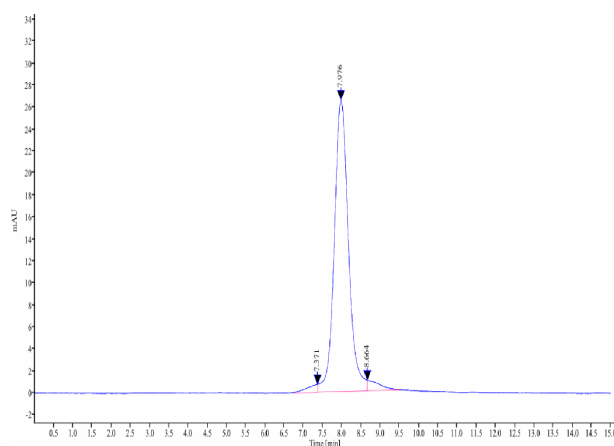
## Assay Data

### Bis-Tris PAGE



Mouse Latent GDF-8 on Bis-Tris PAGE under reduced condition. The purity is greater than 95%.

### SEC-HPLC



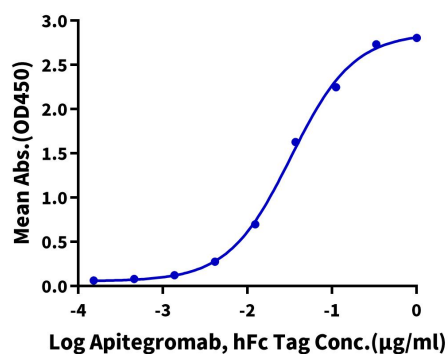
The purity of Mouse Latent GDF-8 is greater than 90% as determined by SEC-HPLC.

Assay Data

ELISA Data

**Mouse Latent GDF-8, His Tag ELISA**

0.2µg Mouse Latent GDF-8, His Tag Per Well

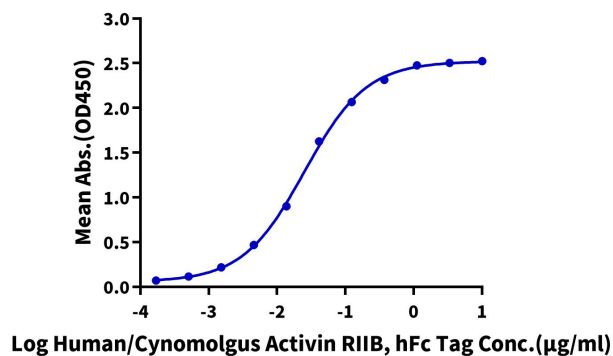


Immobilized Mouse Latent GDF-8, His Tag at 2µg/ml (100µl/well) on the plate. Dose response curve for Apitegromab, hFc Tag with the EC50 of 32.6ng/ml determined by ELISA.

ELISA Data

**Mouse Latent GDF-8, His Tag ELISA**

0.1µg Mouse Latent GDF-8, His Tag Per Well



Immobilized Mouse Latent GDF-8, His Tag at 1µg/ml (100µl/well) on the plate. Dose response curve for Human/Cynomolgus Activin RIIB, hFc Tag with the EC50 of 25.1ng/ml determined by ELISA.