

# Biotinylated Mouse GDF15 Protein (Primary Amine Labeling)

Cat. No. GDF-MM215B

Description	
Source	Recombinant Biotinylated Mouse GDF15 Protein (Primary Amine Labeling) is expressed from HEK293 with hFc tag at the N-Terminus. It contains Ser189-Ala303.
Accession	Q9Z0J7
Molecular Weight	The protein has a predicted MW of 37.9 kDa. Due to glycosylation, the protein migrates to 40-50 kDa based on Bis-Tris PAGE result.
Endotoxin	Less than 1EU per $\mu\text{g}$ by the LAL method.
Purity	> 95% as determined by Bis-Tris PAGE > 95% as determined by HPLC

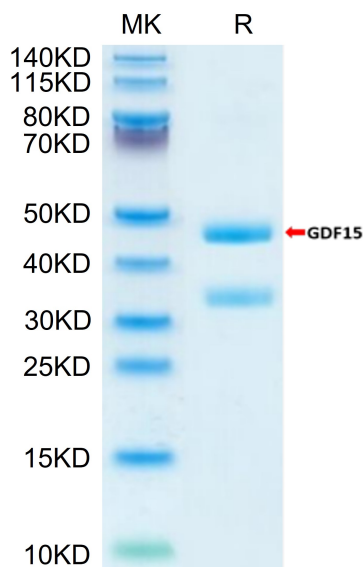
Formulation and Storage	
Formulation	Supplied as 0.22 $\mu\text{m}$ filtered solution in PBS (pH 7.4).
Storage	Valid for 12 months from date of receipt when stored at -80°C. Recommend to aliquot the protein into smaller quantities for optimal storage. Please minimize freeze-thaw cycles.

**Background**

Growth and differentiation factor 15 (GDF15) is an inflammation-associated hormone with poorly defined biology. Here, we investigated the role of GDF15 in bacterial and viral infections. Inflammation induced GDF15, and that GDF15 was necessary for surviving both bacterial and viral infections, as well as sepsis. The protective effects of GDF15 were largely independent of pathogen control or the magnitude of inflammatory response, suggesting a role in disease tolerance.

## Assay Data

### Bis-Tris PAGE



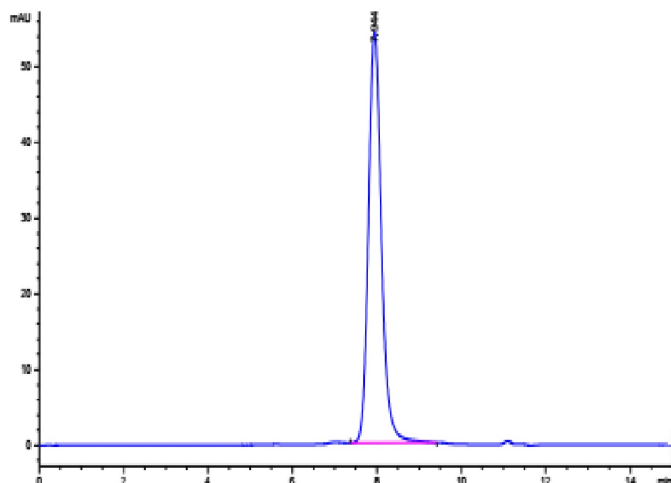
Biotinylated Mouse GDF15 on Bis-Tris PAGE under reduced condition. The purity is greater than 95%.

### SEC-HPLC

# Biotinylated Mouse GDF15 Protein (Primary Amine Labeling)

Cat. No. GDF-MM215B

## Assay Data

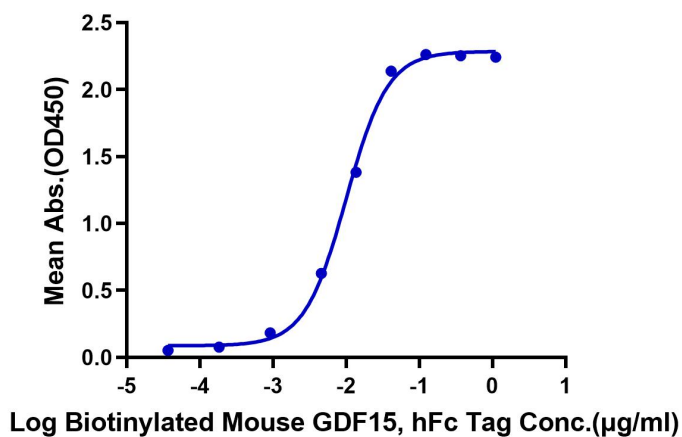


The purity of Biotinylated Mouse GDF15 is greater than 95% as determined by SEC-HPLC.

## ELISA Data

### Biotinylated Mouse GDF15, hFc ELISA

0.2 $\mu$ g Mouse GFRAL, His Tag Per Well



Immobilized Mouse GFRAL, His Tag at 2 $\mu$ g/ml (100 $\mu$ l/Well) on the plate. Dose response curve for Biotinylated Mouse GDF15, hFc Tag with the EC50 of 10ng/ml determined by ELISA.