

Human GFRA3 Protein

Cat. No. GFR-HM1A3

Description

Source	Recombinant Human GFRA3 Protein is expressed from HEK293 with His tag at the C-Terminus. It contains Asp32-Trp382.
Accession	O60609-1
Molecular Weight	The protein has a predicted MW of 40.3 kDa. Due to glycosylation, the protein migrates to 50-55 kDa based on Bis-Tris PAGE result.
Endotoxin	Less than 1EU per µg by the LAL method.
Purity	> 95% as determined by Bis-Tris PAGE > 95% as determined by HPLC

Formulation and Storage

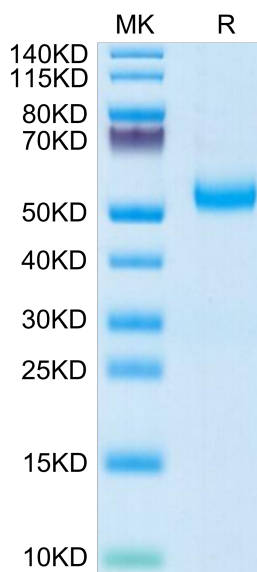
Formulation	Supplied as 0.22µm filtered solution in PBS (pH 7.4).
Storage	Valid for 12 months from date of receipt when stored at -80°C. Recommend to aliquot the protein into smaller quantities for optimal storage. Please minimize freeze-thaw cycles.

Background

GDNF (glial-cell-line derived neurotrophic factor) is a potent neurotrophic factor for dopaminergic neurons. Neuropsychiatric diseases and their treatments are associated with alterations in the levels of both GDNF and its receptor family (GDNF family receptor alpha or GFRA). GFRA1, GFRA2 and GFRA3 are located in chromosomal regions with suggestive linkage to schizophrenia.

Assay Data

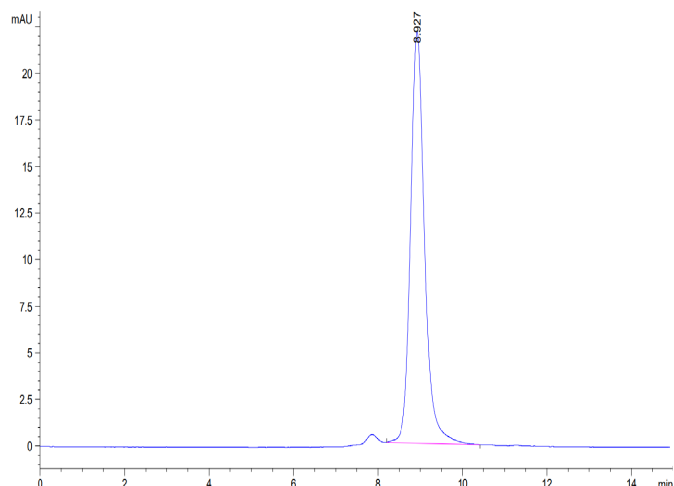
Bis-Tris PAGE



Human GFRA3 on Bis-Tris PAGE under reduced condition. The purity is greater than 95%.

SEC-HPLC

Assay Data

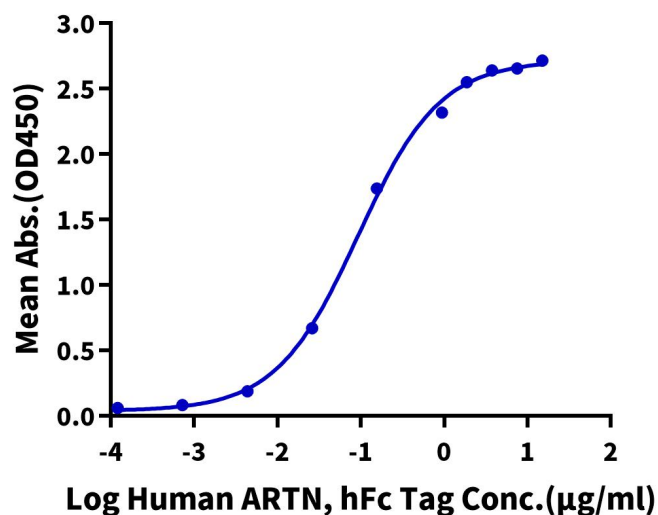


The purity of Human GFRA3 is greater than 95% as determined by SEC-HPLC.

ELISA Data

Human GFRA3, His Tag ELISA

0.5µg Human GFRA3, His Tag Per Well

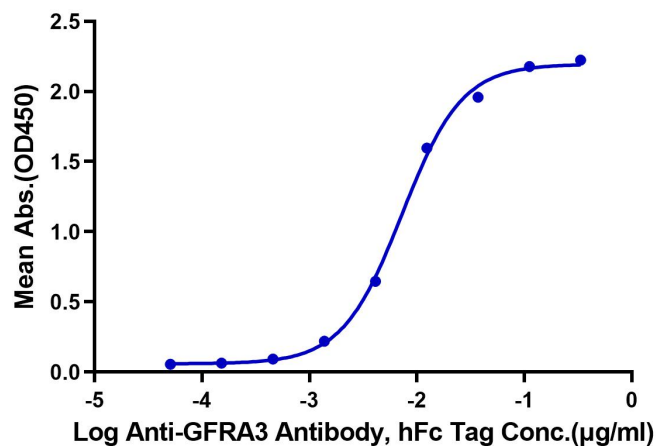


Immobilized Human GFRA3, His Tag at 5µg/ml (100µl/well) on the plate. Dose response curve for Human ARTN, hFc Tag with the EC50 of 92.5ng/ml determined by ELISA (QC Test).

ELISA Data

Human GFRA3, His Tag ELISA

0.02µg Human GFRA3, His Tag Per Well



Immobilized Human GFRA3, His Tag at 0.2µg/ml (100µl/well) on the plate. Dose response curve for Anti-GFRA3 Antibody, hFc Tag with the EC50 of 7.3ng/ml determined by ELISA.