

Human GFRA3 Protein

Cat. No. GFR-HM1A3



Description

Source	Recombinant Human GFRA3 Protein is expressed from HEK293 with His tag at the C-Terminus. It contains Asp32-Trp382.
Accession	O60609-1
Molecular Weight	The protein has a predicted MW of 40.3 kDa. Due to glycosylation, the protein migrates to 50-55 kDa based on Tris-Bis PAGE result.
Endotoxin	Less than 1EU per µg by the LAL method.
Purity	> 95% as determined by Tris-Bis PAGE > 95% as determined by HPLC

Formulation and Storage

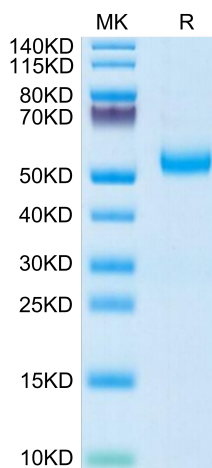
Formulation	Lyophilized from 0.22µm filtered solution in PBS (pH 7.4). Normally 8% trehalose is added as protectant before lyophilization.
Reconstitution	Centrifuge the tube before opening. Reconstituting to a concentration more than 100 µg/ml is recommended. Dissolve the lyophilized protein in distilled water.
Storage	-20 to -80°C for 12 months as supplied from date of receipt. -80°C for 3-6 months after reconstitution. 2-8°C for 2-7 days after reconstitution. Recommend to aliquot the protein into smaller quantities for optimal storage. Please minimize freeze-thaw cycles.

Background

GDNF (glial-cell-line derived neurotrophic factor) is a potent neurotrophic factor for dopaminergic neurons. Neuropsychiatric diseases and their treatments are associated with alterations in the levels of both GDNF and its receptor family (GDNF family receptor alpha or GFRA). GFRA1, GFRA2 and GFRA3 are located in chromosomal regions with suggestive linkage to schizophrenia.

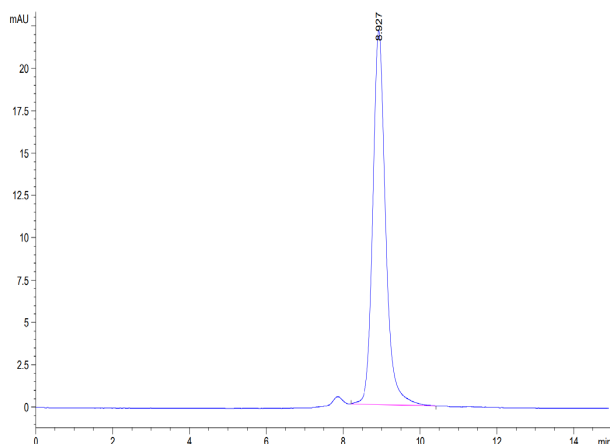
Assay Data

Tris-Bis PAGE



Human GFRA3 on Tris-Bis PAGE under reduced condition. The purity is greater than 95%.

SEC-HPLC



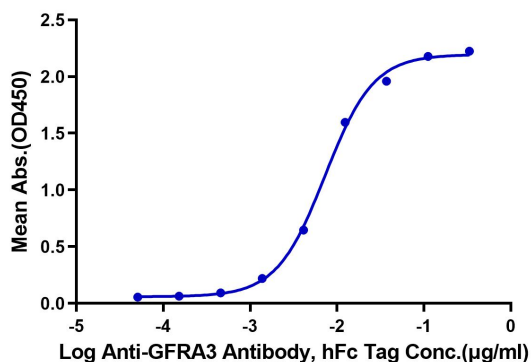
The purity of Human GFRA3 is greater than 95% as determined by SEC-HPLC.

Assay Data

ELISA Data

Human GFRA3, His Tag ELISA

0.02µg Human GFRA3, His Tag Per Well

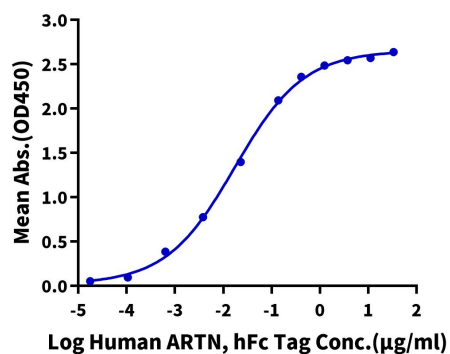


Immobilized Human GFRA3, His Tag at 0.2µg/ml (100µl/well) on the plate. Dose response curve for Anti-GFRA3 Antibody, hFc Tag with the EC50 of 7.3ng/ml determined by ELISA (QC Test).

ELISA Data

Human GFRA3, His Tag ELISA

0.5µg Human GFRA3, His Tag Per Well



Immobilized Human GFRA3, His Tag at 5µg/ml (100µl/well) on the plate. Dose response curve for Human ARTN, hFc Tag with the EC50 of 17.2ng/ml determined by ELISA.