

Mouse GFRA3 Protein

Cat. No. GFR-MM1A3

Description

Source	Recombinant Mouse GFRA3 Protein is expressed from HEK293 with His tag at the C-Terminus. It contains Asn29-Arg379.
Accession	O35118
Molecular Weight	The protein has a predicted MW of 40.3 kDa. Due to glycosylation, the protein migrates to 47-52 kDa based on Bis-Tris PAGE result.
Endotoxin	Less than 1EU per μg by the LAL method.
Purity	> 95% as determined by Bis-Tris PAGE > 95% as determined by HPLC

Formulation and Storage

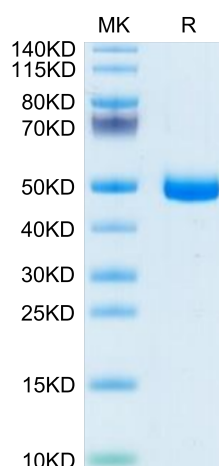
Formulation	Supplied as 0.22 μm filtered solution in PBS (pH 7.4).
Storage	Valid for 12 months from date of receipt when stored at -80°C . Recommend to aliquot the protein into smaller quantities for optimal storage. Please minimize freeze-thaw cycles.

Background

GDNF (glial-cell-line derived neurotrophic factor) is a potent neurotrophic factor for dopaminergic neurons. Neuropsychiatric diseases and their treatments are associated with alterations in the levels of both GDNF and its receptor family (GDNF family receptor alpha or GFRA). GFRA1, GFRA2 and GFRA3 are located in chromosomal regions with suggestive linkage to schizophrenia.

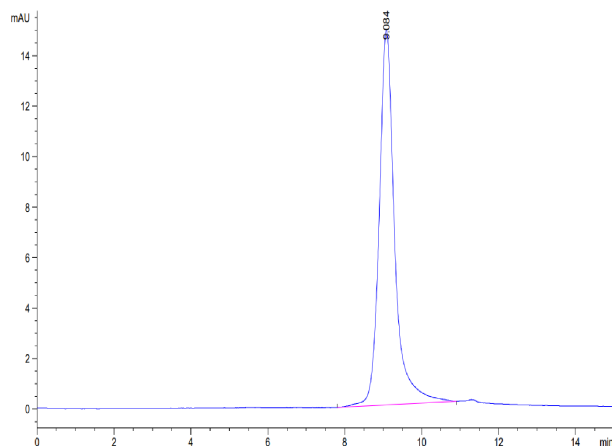
Assay Data

Bis-Tris PAGE



Mouse GFRA3 on Bis-Tris PAGE under reduced condition. The purity is greater than 95%.

SEC-HPLC



The purity of Mouse GFRA3 is greater than 95% as determined by SEC-HPLC.

Mouse GFRA3 Protein

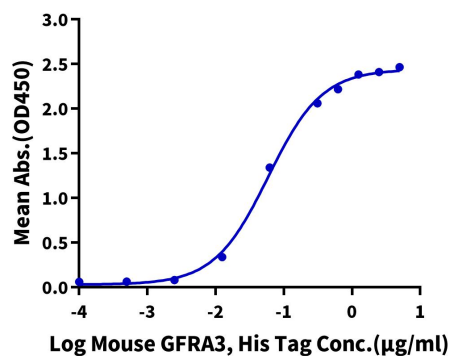
Cat. No. GFR-MM1A3

Assay Data

ELISA Data

Mouse GFRA3, His Tag ELISA

0.5µg Mouse ARTN, hFc Tag Per Well



Immobilized Mouse ARTN, hFc Tag at 5µg/ml (100µl/well) on the plate. Dose response curve for Mouse GFRA3, His Tag with the EC50 of 54.7ng/ml determined by ELISA (QC Test).