

Human GIPR Protein

Cat. No. GIP-HM40R

Description

Source	Recombinant Human GIPR Protein is expressed from HEK293 with His tag and Avi tag at the C-terminus. It contains Gly26-Gln138.
Accession	P48546-1
Molecular Weight	The protein has a predicted MW of 15.88 kDa. Due to glycosylation, the protein migrates to 30-40 kDa based on Bis-Tris PAGE result.
Endotoxin	Less than 1EU per µg by the LAL method.
Purity	> 95% as determined by Bis-Tris PAGE > 95% as determined by HPLC

Formulation and Storage

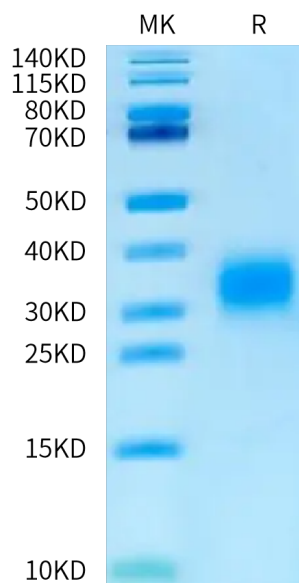
Formulation	Lyophilized from 0.22 µm filtered solution in PBS (pH 7.4). Normally 8% trehalose is added as protectant before lyophilization.
Reconstitution	Centrifuge the tube before opening. Reconstituting to a concentration more than 100 µg/ml is recommended. Dissolve the lyophilized protein in distilled water.
Storage	-20 to -80°C for 12 months as supplied from date of receipt. -80°C for 3-6 months after reconstitution. 2-8°C for 2-7 days after reconstitution. Recommend to aliquot the protein into smaller quantities for optimal storage. Please minimize freeze-thaw cycles.

Background

The gastric inhibitory polypeptide receptor (GIPR), a G protein-coupled receptor (GPCR) that regulates glucose metabolism and insulin secretion, is a target for the development of therapeutic agents to address type 2 diabetes and obesity.

Assay Data

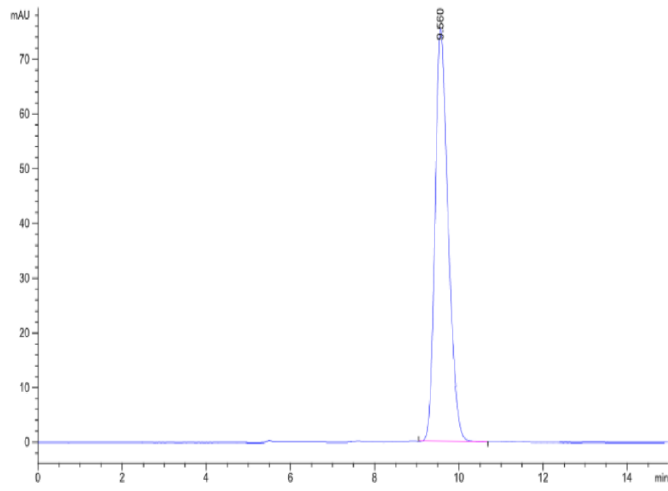
Bis-Tris PAGE



Human GIPR on Bis-Tris PAGE under reduced condition. The purity is greater than 95%.

SEC-HPLC

Assay Data



The purity of Human GIPR is greater than 95% as determined by SEC-HPLC.