

Cynomolgus Galectin 3 Protein

Cat. No. GLT-CM103



Description

| | |
|-------------------------|---|
| Source | Recombinant Cynomolgus Galectin 3 Protein is expressed from HEK293 with His tag at the N-Terminus. It contains Ala2-Ile248. |
| Accession | XP_005561371.1 |
| Molecular Weight | The protein has a predicted MW of 27.05 kDa. Due to glycosylation, the protein migrates to 38-48 kDa based on Bis-Tris PAGE result. |
| Endotoxin | Less than 1EU per µg by the LAL method. |
| Purity | > 95% as determined by Bis-Tris PAGE |

Formulation and Storage

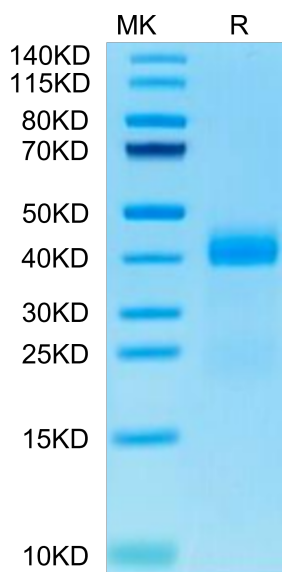
| | |
|--------------------|--|
| Formulation | Supplied as 0.22µm filtered solution in 50mM Hepes, 150mM NaCl, 200mM L-arginine, 2mM Tcep (pH 6.5). |
| Storage | Valid for 12 months from date of receipt when stored at -80°C. Recommend to aliquot the protein into smaller quantities for optimal storage. Please minimize freeze-thaw cycles. |

Background

Galectin-3, also known as Mac-2, L29, CBP35, and epsilon BP, is classified as a chimeric member of the Galectin superfamily and contains one carbohydrate recognition domain (CRD) linked to a nonlectin domain. Galactose-specific lectin which binds IgE. May mediate with the alpha-3, beta-1 integrin the stimulation by CSPG4 of endothelial cells migration. Together with DMBT1, required for terminal differentiation of columnar epithelial cells during early embryogenesis (By similarity).

Assay Data

Bis-Tris PAGE



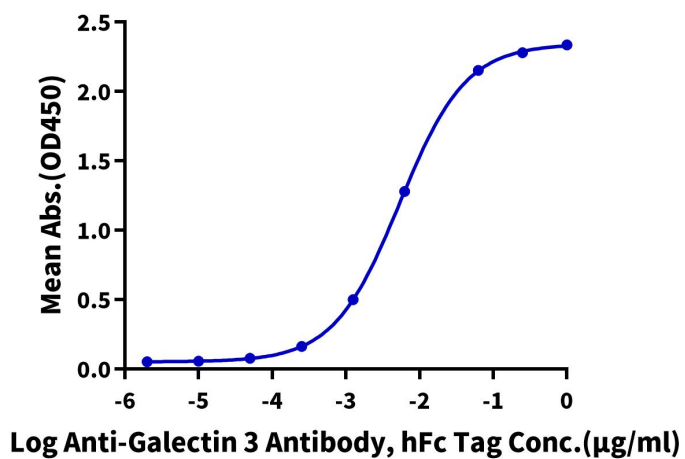
Cynomolgus Galectin 3 on Bis-Tris PAGE under reduced condition. The purity is greater than 95%.

ELISA Data

Assay Data

Cynomolgus Galectin 3, His Tag ELISA

0.2µg Cynomolgus Galectin 3, His Tag Per Well



Immobilized Cynomolgus Galectin 3, His Tag at 2µg/ml (100µl/Well) on the plate. Dose response curve for Anti-Galectin 3 Antibody, hFc Tag with the EC50 of 5.4ng/ml determined by ELISA.