

Cynomolgus Galectin 3 Protein

Cat. No. GLT-CM103



Description

Source	Recombinant Cynomolgus Galectin 3 Protein is expressed from HEK293 with His tag at the N-Terminus. It contains Ala2-Ile248.
Accession	XP_005561371.1
Molecular Weight	The protein has a predicted MW of 27.05 kDa. Due to glycosylation, the protein migrates to 38-48 kDa based on Tris-Bis PAGE result.
Endotoxin	Less than 1EU per µg by the LAL method.
Purity	> 95% as determined by Tris-Bis PAGE

Formulation and Storage

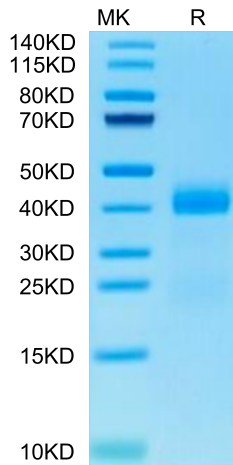
Formulation	Lyophilized from 0.22 µm filtered solution in 50mM Hepes, 150mM NaCl, 200mM L-arginine, 2mM Tcep (pH 6.5). Normally 8% mannitol is added as protectant before lyophilization.
Reconstitution	Centrifuge the tube before opening. Reconstituting to a concentration more than 100 µg/ml is recommended. Dissolve the lyophilized protein in distilled water.
Storage	-20 to -80°C for 12 months as supplied from date of receipt. -80°C for 3-6 months after reconstitution. 2-8°C for 2-7 days after reconstitution. Recommend to aliquot the protein into smaller quantities for optimal storage. Please minimize freeze-thaw cycles.

Background

Galectin-3, also known as Mac-2, L29, CBP35, and epsilon BP, is classified as a chimeric member of the Galectin superfamily and contains one carbohydrate recognition domain (CRD) linked to a nonlectin domain. Galactose-specific lectin which binds IgE. May mediate with the alpha-3, beta-1 integrin the stimulation by CSPG4 of endothelial cells migration. Together with DMBT1, required for terminal differentiation of columnar epithelial cells during early embryogenesis (By similarity).

Assay Data

Tris-Bis PAGE

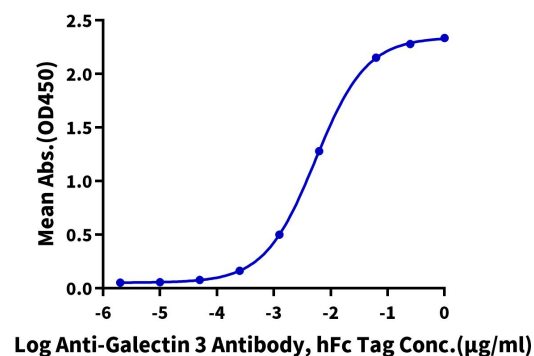


Cynomolgus Galectin 3 on Tris-Bis PAGE under reduced condition. The purity is greater than 95%.

ELISA Data

Cynomolgus Galectin 3, His Tag ELISA

0.2µg Cynomolgus Galectin 3, His Tag Per Well



Immobilized Cynomolgus Galectin 3, His Tag at 2µg/ml (100µl/Well) on the plate. Dose response curve for Anti-Galectin 3 Antibody, hFc Tag with the EC50 of 5.4ng/ml determined by ELISA.