

Human Galectin 3 Protein

Cat. No. GLT-HM103

Description

Source	Recombinant Human Galectin 3 Protein is expressed from HEK293 with His tag at the N-Terminus. It contains Ala2-Ile250.
Accession	P17931
Molecular Weight	The protein has a predicted MW of 27.1 kDa. Due to glycosylation, the protein migrates to 35-45 kDa based on Bis-Tris PAGE result.
Endotoxin	Less than 1 EU per µg by the LAL method.
Purity	> 95% as determined by Bis-Tris PAGE

Formulation and Storage

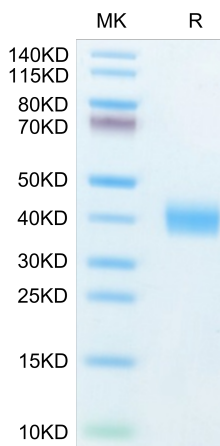
Formulation	Lyophilized from 0.22 µm filtered solution in 50 mM HEPES, 150 mM NaCl, 5 mM EDTA, 2 mM TCEP (pH 7.4). Normally 8% trehalose is added as protectant before lyophilization.
Reconstitution	Centrifuge the tube before opening. Reconstituting to a concentration more than 100 µg/ml is recommended. Dissolve the lyophilized protein in distilled water.
Storage	-20 to -80°C for 12 months as supplied from date of receipt. -80°C for 3 months after reconstitution. Recommend to aliquot the protein into smaller quantities for optimal storage. Please minimize freeze-thaw cycles.

Background

Human Galectin-3, also known as Mac-2, L29, CBP35, and epsilon BP, is classified as a chimeric member of the Galectin superfamily and contains one carbohydrate recognition domain (CRD) linked to a nonlectin domain. Galactose-specific lectin which binds IgE. May mediate with the alpha-3, beta-1 integrin the stimulation by CSPG4 of endothelial cells migration. Together with DMBT1, required for terminal differentiation of columnar epithelial cells during early embryogenesis (By similarity).

Assay Data

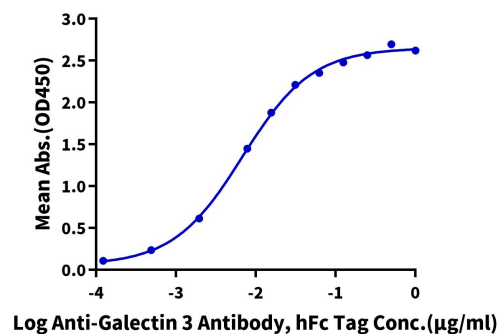
Bis-Tris PAGE



Human Galectin 3 on Bis-Tris PAGE under reduced condition. The purity is greater than 95%.

ELISA Data

Human Galectin 3, His Tag ELISA
0.1µg Human Galectin 3, His Tag Per Well



Immobilized Human Galectin 3, His Tag at 1 µg/ml (100 µl/Well) on the plate. Dose response curve for Anti-Galectin 3 Antibody, hFc Tag with the EC50 of 6.8 ng/ml determined by ELISA (QC Test).