

Human CD42b/GP1BA Protein

Cat. No. GP1-HM1BA

Description

Source	Recombinant Human CD42b/GP1BA Protein is expressed from HEK293 with His tag at the C-Terminus. It contains His17-Leu531.
Accession	P07359
Molecular Weight	The protein has a predicted MW of 57.6 kDa. Due to glycosylation, the protein migrates to 110-115 kDa based on Bis-Tris PAGE result.
Endotoxin	Less than 1EU per μg by the LAL method.
Purity	> 95% as determined by Bis-Tris PAGE > 95% as determined by HPLC

Formulation and Storage

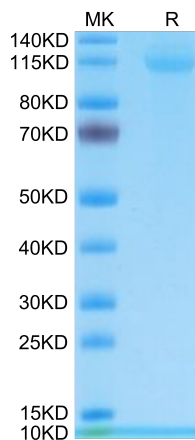
Formulation	Lyophilized from 0.22 μm filtered solution in PBS (pH 7.4). Normally 8% trehalose is added as protectant before lyophilization.
Reconstitution	Centrifuge the tube before opening. Reconstituting to a concentration more than 100 $\mu\text{g}/\text{ml}$ is recommended. Dissolve the lyophilized protein in distilled water.
Storage	-20 to -80°C for 12 months as supplied from date of receipt. -80°C for 3 months after reconstitution. Recommend to aliquot the protein into smaller quantities for optimal storage. Please minimize freeze-thaw cycles.

Background

Absence of the CD42 complex leads to the Bernard-Soulier syndrome (BSS), which is a bleeding disorder characterized by thrombocytopenia and giant platelets. So far, mutations have been found in the genes encoding CD42a, CD42b and CD42c in patients with BSS**.

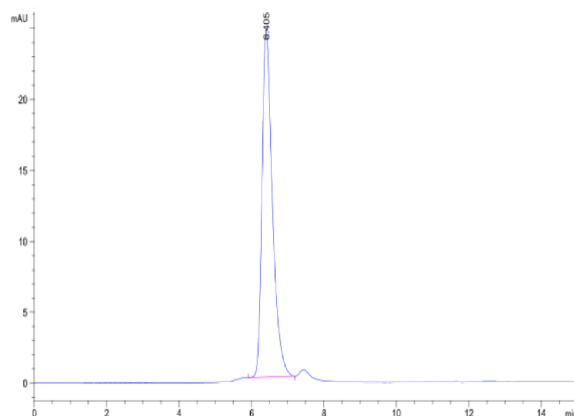
Assay Data

Bis-Tris PAGE



Human CD42b on Bis-Tris PAGE under reduced condition. The purity is greater than 95%.

SEC-HPLC



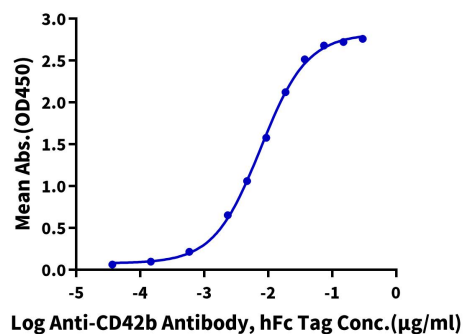
The purity of Human CD42b is greater than 95% as determined by SEC-HPLC.

Assay Data

ELISA Data

Human CD42b, His Tag ELISA

0.1µg Human CD42b, His Tag Per Well



Immobilized Human CD42b, His Tag at 1µg/ml (100µl/well) on the plate. Dose response curve for Anti-CD42b Antibody, hFc Tag with the EC50 of 7.6ng/ml determined by ELISA (QC Test).