

Cynomolgus GPVI Protein, Ultra Low Endotoxin



Cat. No. GP6-CM101-UL

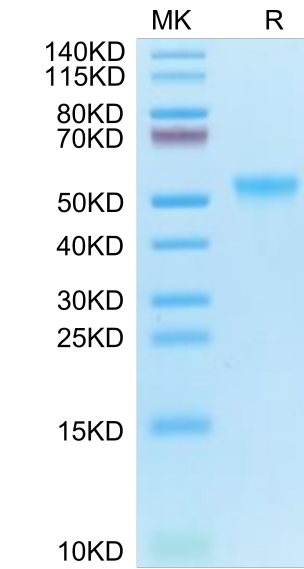
Description	
Source	Recombinant Cynomolgus GPVI Protein is expressed from HEK293 with His tag at the C-Terminus It contains Gln21-Asn251.
Accession	XP_005590417.2
Molecular Weight	The protein has a predicted MW of 26.42 kDa. Due to glycosylation, the protein migrates to 50-60 kDa based on Bis-Tris PAGE result.
Endotoxin	Less than 0.01 EU per µg by the LAL method.
Purity	> 95% as determined by Bis-Tris PAGE > 95% as determined by HPLC

Formulation and Storage	
Formulation	Lyophilized from 0.22 µm filtered solution in PBS (pH 7.4). Normally 8% trehalose is added as protectant before lyophilization.
Reconstitution	Dissolve the lyophilized protein in distilled water. Please refer to the Certificate of Analysis for detailed instructions.
Storage	-20 to -80°C for 12 months as supplied from date of receipt. -80°C for 3 months after reconstitution. Recommend to aliquot the protein into smaller quantities for optimal storage. Please minimize freeze-thaw cycles.

Background	
Although platelets are best known for their role in hemostasis, they are also crucial in development, host defense, inflammation, and tissue repair. Many of these roles are regulated by the immune-like receptors glycoprotein VI (GPVI) and C-type lectin receptor 2 (CLEC-2), which signal through an immunoreceptor tyrosine-based activation motif (ITAM). GPVI is activated by collagen in the subendothelial matrix, by fibrin and fibrinogen in the thrombus, and by a remarkable number of other ligands.	

Assay Data

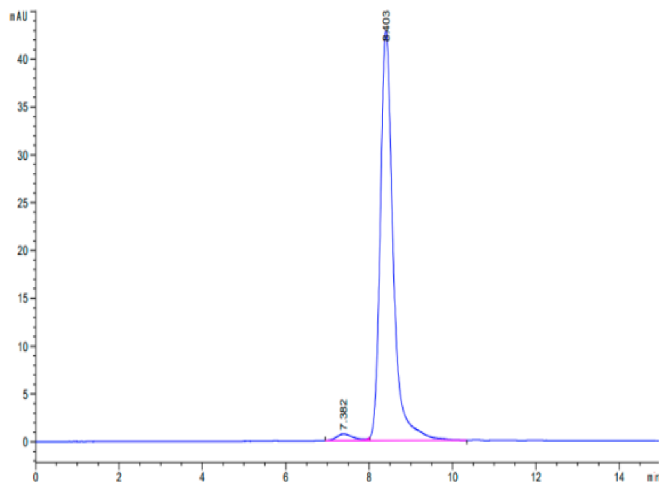
Bis-Tris PAGE



Cynomolgus GPVI on Bis-Tris PAGE under reduced condition. The purity is greater than 95%.

SEC-HPLC

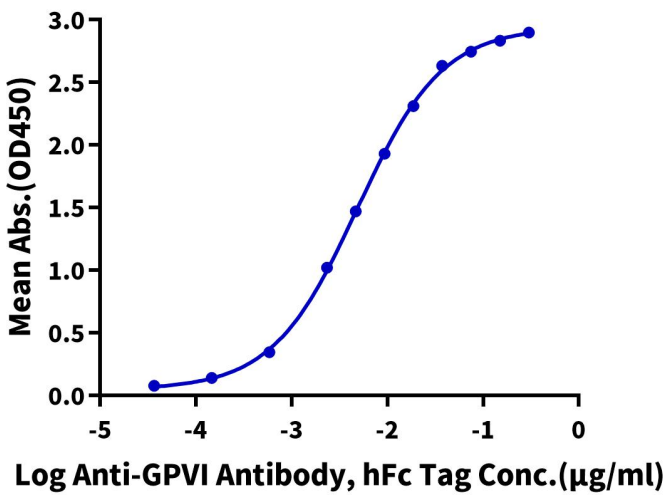
Assay Data



The purity of Cynomolgus GPVI is greater than 95% as determined by SEC-HPLC.

ELISA Data

Cynomolgus GPVI, His Tag ELISA
0.05µg Cynomolgus GPVI, His Tag Per Well



Immobilized Cynomolgus GPVI, His Tag at 0.5 µg/ml (100 µl/well) on the plate. Dose response curve for Anti-GPVI Antibody, hFc Tag with the EC50 of 4.9 ng/ml determined by ELISA (QC Test).