

# Human GPVI Protein, Ultra Low Endotoxin

Cat. No. GP6-HM101-UL

## Description

<b>Source</b>	Recombinant Human GPVI Protein is expressed from HEK293 with His tag at the C-Terminus. It contains Gln21-Lys267.
<b>Accession</b>	Q9HCN6-1
<b>Molecular Weight</b>	The protein has a predicted MW of 28 kDa. Due to glycosylation, the protein migrates to 50-60 kDa based on Bis-Tris PAGE result.
<b>Endotoxin</b>	Less than 0.01 EU per µg by the LAL method.
<b>Purity</b>	> 95% as determined by Bis-Tris PAGE > 95% as determined by HPLC

## Formulation and Storage

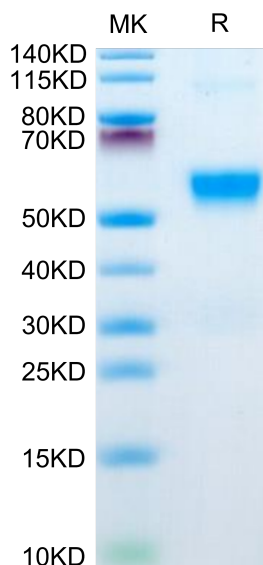
<b>Formulation</b>	Lyophilized from 0.22µm filtered solution in PBS (pH 7.4). Normally 8% trehalose is added as protectant before lyophilization.
<b>Reconstitution</b>	Dissolve the lyophilized protein in distilled water. Please refer to the Certificate of Analysis for detailed instructions.
<b>Storage</b>	-20 to -80°C for 12 months as supplied from date of receipt. -80°C for 3 months after reconstitution. Recommend to aliquot the protein into smaller quantities for optimal storage. Please minimize freeze-thaw cycles.

## Background

The immunoglobulin receptor GPVI (glycoprotein VI) is selectively expressed on megakaryocytes and platelets and is currently recognized as a receptor for not only collagen but also a variety of plasma and vascular proteins, including fibrin, fibrinogen, laminin, fibronectin, and galectin-3.

## Assay Data

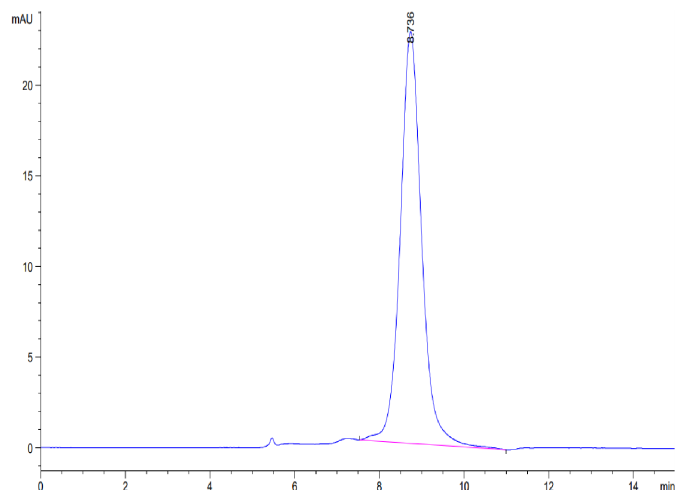
### Bis-Tris PAGE



Human GPVI on Bis-Tris PAGE under reduced condition. The purity is greater than 95%.

### SEC-HPLC

Assay Data

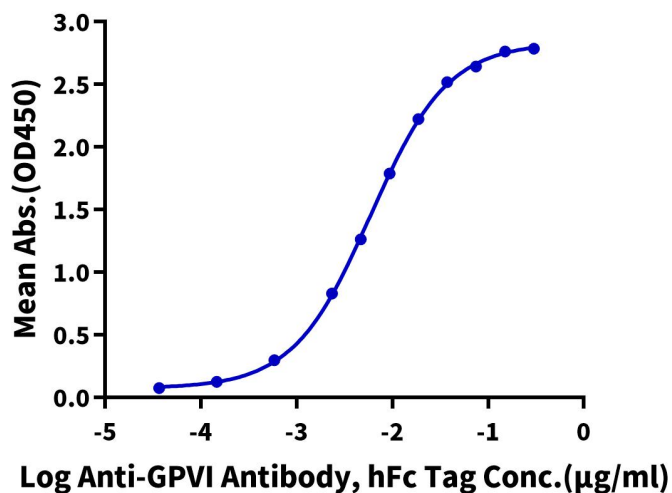


The purity of Human GPVI is greater than 95% as determined by SEC-HPLC.

ELISA Data

**Human GPVI, His Tag ELISA**

0.1µg Human GPVI, His Tag Per Well



Immobilized Human GPVI, His Tag at 1µg/ml (100µl/Well) on the plate. Dose response curve for Anti-GPVI Antibody, hFc Tag with the EC50 of 5.9ng/ml determined by ELISA (QC Test).