

# Cynomolgus GPC3/Glypican 3 Protein

Cat. No. GPC-CM131

## Description

<b>Source</b>	Recombinant Cynomolgus GPC3/Glypican 3 Protein is expressed from HEK293 with His tag at the C-Terminus. It contains Gln25-His559.
<b>Accession</b>	XP_005594665.1
<b>Molecular Weight</b>	The protein has a predicted MW of 61.8 kDa. Due to glycosylation, the protein migrates to 42 kDa, 70-135 kDa based on Bis-Tris PAGE result.
<b>Endotoxin</b>	Less than 1EU per µg by the LAL method.
<b>Purity</b>	> 95% as determined by Bis-Tris PAGE > 95% as determined by HPLC

## Formulation and Storage

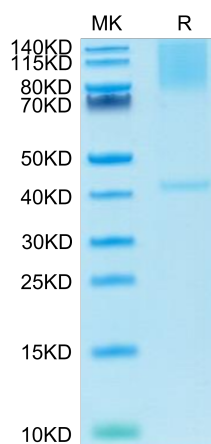
<b>Formulation</b>	Lyophilized from 0.22µm filtered solution in PBS (pH 7.4). Normally 8% trehalose is added as protectant before lyophilization.
<b>Reconstitution</b>	Centrifuge the tube before opening. Reconstituting to a concentration more than 100 µg/ml is recommended. Dissolve the lyophilized protein in distilled water.
<b>Storage</b>	-20 to -80°C for 12 months as supplied from date of receipt. -80°C for 3 months after reconstitution. Recommend to aliquot the protein into smaller quantities for optimal storage. Please minimize freeze-thaw cycles.

## Background

Glypican-3 is a protein, which is encoded by the GPC3 gene in humans. The protein core of GPC3 consists of two subunits, where the N-terminal subunit has a size of ~40 kDa and the C-terminal subunit is ~30 kDa. Glypican 3 is a potential therapeutic target for treating liver cancer and other cancers. Several therapeutic anti-GPC3 antibodies have been developed.

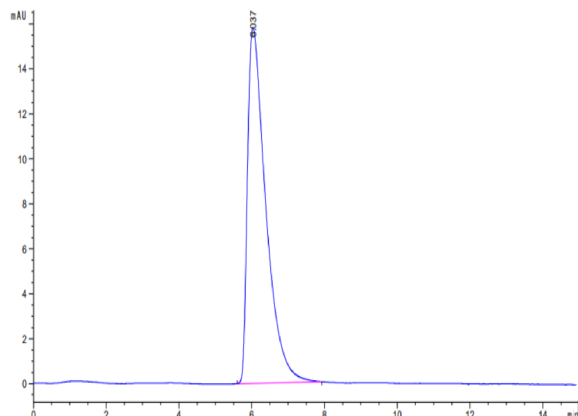
## Assay Data

### Bis-Tris PAGE



Cynomolgus GPC3 on Bis-Tris PAGE under reduced condition. The purity is greater than 95%.

### SEC-HPLC



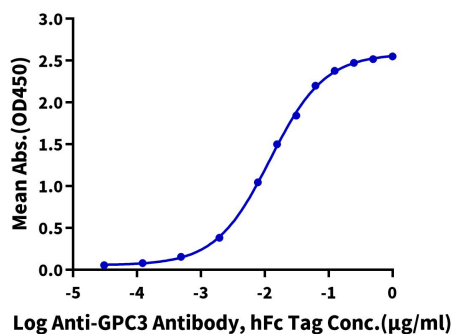
The purity of Cynomolgus GPC3 is greater than 95% as determined by SEC-HPLC.

Assay Data

ELISA Data

**Cynomolgus GPC3, His Tag ELISA**

0.1µg Cynomolgus GPC3, His Tag Per Well



Immobilized Cynomolgus GPC3, His Tag at 1µg/ml (100µl/well) on the plate. Dose response curve for Anti-GPC3 Antibody, hFc Tag with the EC50 of 12.1ng/ml determined by ELISA (QC Test).