

Mouse Glypican 1/GPC1 Protein

Cat. No. GPC-MM111

Description

Source	Recombinant Mouse Glypican 1/GPC1 Protein is expressed from Expi293 with His tag at the C-terminal. It contains Asp24-Ser529.
Accession	Q9QZF2
Molecular Weight	The protein has a predicted MW of 56.8 kDa. Due to glycosylation, the protein migrates to 65-68 kDa based on Tris-Bis PAGE result.
Endotoxin	Less than 1EU per μ g by the LAL method.
Purity	> 95% as determined by Tris-Bis PAGE > 95% as determined by HPLC

Formulation and Storage

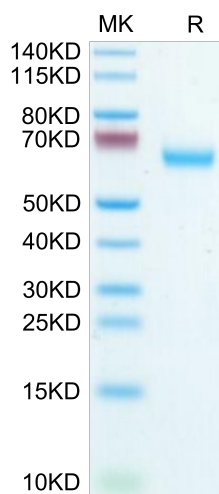
Formulation	Supplied as 0.22 μ m filtered solution in 50mM Tris,150mM NaCl (pH 7.5). Please dilute to the desired concentration according to the concentration of the solution shown on the product label.
Storage	Valid for 12 months from date of receipt when stored at -80°C. Recommend to aliquot the protein into smaller quantities for optimal storage. Please do not repeated freeze-thaw cycles.

Background

CAR-T cells targeting glypican-1 (GPC1)-specific human and murine CAR-T cells generated from our original anti-human/mouse GPC1 antibody showed strong antitumor effects in xenogeneic and syngeneic mouse models, respectively. Importantly, the murine CAR-T cells enhanced endogenous T cell responses against a non-GPC1 tumor antigen through the mechanism of antigen-spreading and showed synergistic antitumor effects with anti-PD-1 antibody without any adverse effects in syngeneic models.

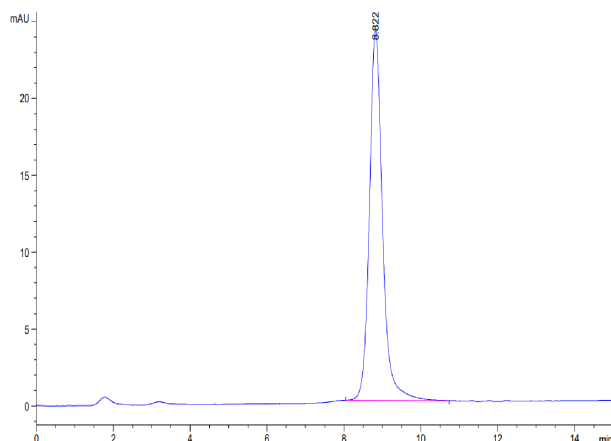
Assay Data

Tris-Bis PAGE



Mouse Glypican 1/GPC1 on Tris-Bis PAGE under reduced condition. The purity is greater than 95%.

SEC-HPLC



The purity of Mouse Glypican 1/GPC1 is greater than 95% as determined by SEC-HPLC.