

Human GPR20 VLP

Cat. No. GPR-HM020

Description

Source	Recombinant Human GPR20 VLP is expressed from HEK293. It contains Met1-Ala358 (It may have cross reaction with anti-His antibody).
Accession	Q99678
Molecular Weight	The target protein has a predicted MW of 41.86 kDa.
Endotoxin	Less than 1 EU per µg by the LAL method.
Purity	> 95% as determined by HPLC

Formulation and Storage

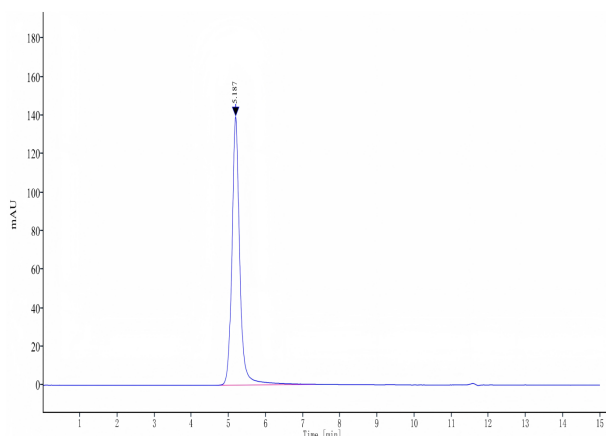
Formulation	Supplied as 0.22 µm filtered solution in PBS, 300mM L-Arginine (pH 7.4). Notice: If you need it for immunization, water-soluble adjuvant is recommended.
Storage	Valid for 12 months from date of receipt when stored at -80°C. Recommend to aliquot the protein into smaller quantities for optimal storage. Please minimize freeze-thaw cycles.

Background

GPR20, an orphan G protein-coupled receptor (GPCR), shows significant expression in intestinal tissue and represents a potential therapeutic target to treat gastrointestinal stromal tumors. GPR20 performs high constitutive activity when coupling with Gi.

Assay Data

SEC-HPLC

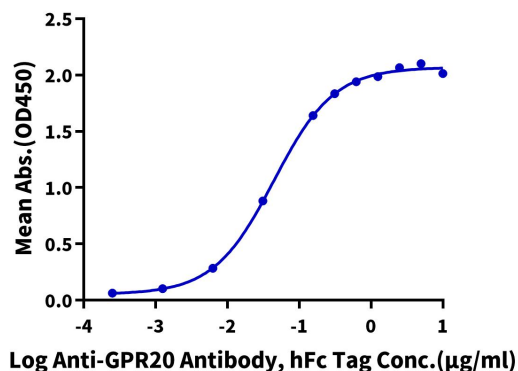


The purity of Human GPR20 VLP is greater than 95% as determined by SEC-HPLC.

ELISA Data

Human GPR20 VLP ELISA

0.5µg Human GPR20 VLP Per Well



Immobilized Human GPR20 VLP at 5µg/ml (100µl/well) on the plate. Dose response curve for Anti-GPR20 Antibody, hFc Tag with the EC50 of 44.3ng/ml determined by ELISA.