

Human GPR146 VLP

Cat. No. GPR-HM046

Description

Source	Recombinant Human GPR146 VLP is expressed from HEK293. It contains Met1-Ala333 (It may have cross reaction with anti-His antibody).
Accession	Q96CH1
Molecular Weight	The target protein has a predicted MW of 39.79 kDa.
Endotoxin	Less than 1 EU per µg by the LAL method.
Purity	> 95% as determined by HPLC

Formulation and Storage

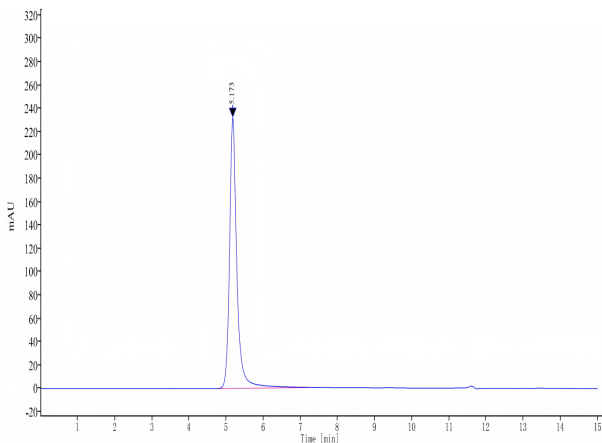
Formulation	Supplied as 0.22 µm filtered solution in PBS, 300mM L-Arginine (pH 7.4). Notice: If you need it for immunization, water-soluble adjuvant is recommended.
Storage	Valid for 12 months from date of receipt when stored at -80°C. Recommend to aliquot the protein into smaller quantities for optimal storage. Please minimize freeze-thaw cycles.

Background

Orphan G protein-coupled receptor 146 (GPR146), a susceptible gene associated with plasma total cholesterol (TC), LDL-C and high density lipoprotein cholesterol (HDL-C) levels, in regulation of systemic cholesterol metabolism. GPR146 promotes activity of hepatic sterol regulatory element binding protein 2 (SREBP2) through activation of the extracellular signal-regulated kinase (ERK) signaling pathway, thereby regulating hepatic very low-density lipoprotein (VLDL) secretion, and subsequently circulating low-density lipoprotein cholesterol (LDL-C) and triglycerides (TG) levels.

Assay Data

SEC-HPLC

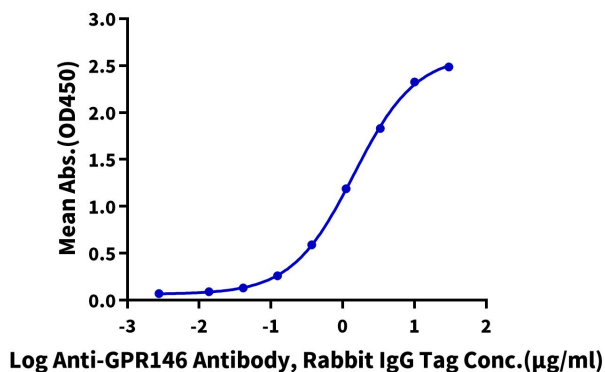


The purity of Human GPR146 VLP is greater than 95% as determined by SEC-HPLC.

ELISA Data

Human GPR146 VLP ELISA

0.5µg Human GPR146 VLP Per Well



Immobilized Human GPR146 VLP at 5µg/ml (100µl/well) on the plate. Dose response curve for Anti-GPR146 Antibody, Rabbit IgG Tag with the EC50 of 1.42µg/ml determined by ELISA.