

# Canine GRP-10 proform Protein

Cat. No. GRP-DM20P

## Description

<b>Source</b>	Recombinant Canine GRP-10 proform Protein is expressed from HEK293 with hFc tag at the C-Terminus. It contains Ala24-Gly147.
<b>Accession</b>	E2QW58
<b>Molecular Weight</b>	The protein has a predicted MW of 40.49 kDa. Due to glycosylation, the protein migrates to 41-50 kDa based on Bis-Tris PAGE result.
<b>Endotoxin</b>	Less than 1EU per $\mu\text{g}$ by the LAL method.
<b>Purity</b>	> 95% as determined by Bis-Tris PAGE > 95% as determined by HPLC

## Formulation and Storage

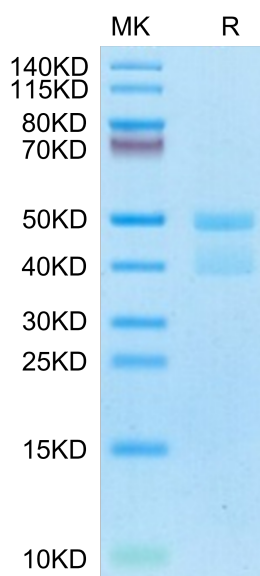
<b>Formulation</b>	Supplied as 0.22 $\mu\text{m}$ filtered solution in PBS (pH 7.4).
<b>Storage</b>	Valid for 12 months from date of receipt when stored at -80°C. Recommend to aliquot the protein into smaller quantities for optimal storage. Please minimize freeze-thaw cycles.

## Background

Gastrin-releasing peptide (GRP) is a neuropeptide with growth-stimulatory and tumorigenic properties, and neuropeptides have previously been suggested to play a role in the complex cascade of chemical activity associated with periodontal inflammation.

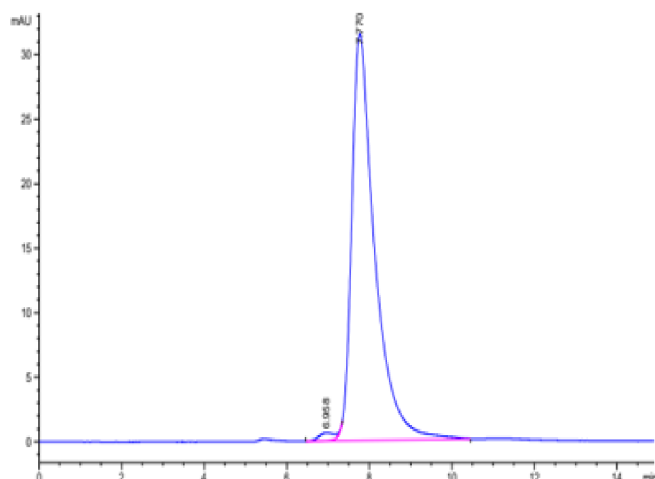
## Assay Data

### Bis-Tris PAGE



Canine GRP-10 proform on Bis-Tris PAGE under reduced condition. The purity is greater than 95%.

### SEC-HPLC



The purity of Canine GRP-10 proform is greater than 95% as determined by SEC-HPLC.