

# Canine GRP-10 proform Protein

Cat. No. GRP-DM20P

## Description

<b>Source</b>	Recombinant Canine GRP-10 proform Protein is expressed from HEK293 with hFc tag at the C-Terminus. It contains Ala24-Gly147.
<b>Accession</b>	E2QW58
<b>Molecular Weight</b>	The protein has a predicted MW of 40.49 kDa. Due to glycosylation, the protein migrates to 41-50 kDa based on Tris-Bis PAGE result.
<b>Endotoxin</b>	Less than 1EU per µg by the LAL method.
<b>Purity</b>	> 95% as determined by Tris-Bis PAGE > 95% as determined by HPLC

## Formulation and Storage

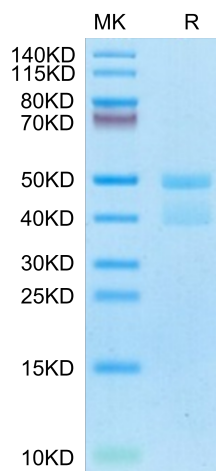
<b>Formulation</b>	Lyophilized from 0.22µm filtered solution in PBS (pH 7.4). Normally 8% trehalose is added as protectant before lyophilization.
<b>Reconstitution</b>	Centrifuge the tube before opening. Reconstituting to a concentration more than 100 µg/ml is recommended. Dissolve the lyophilized protein in distilled water.
<b>Storage</b>	-20 to -80°C for 12 months as supplied from date of receipt. -20 to -80°C for 3-6 months in unopened state after reconstitution. 2-8°C for 2-7 days after reconstitution. Recommend to aliquot the protein into smaller quantities for optimal storage. Please minimize freeze-thaw cycles.

## Background

Gastrin-releasing peptide (GRP) is a neuropeptide with growth-stimulatory and tumorigenic properties, and neuropeptides have previously been suggested to play a role in the complex cascade of chemical activity associated with periodontal inflammation.

## Assay Data

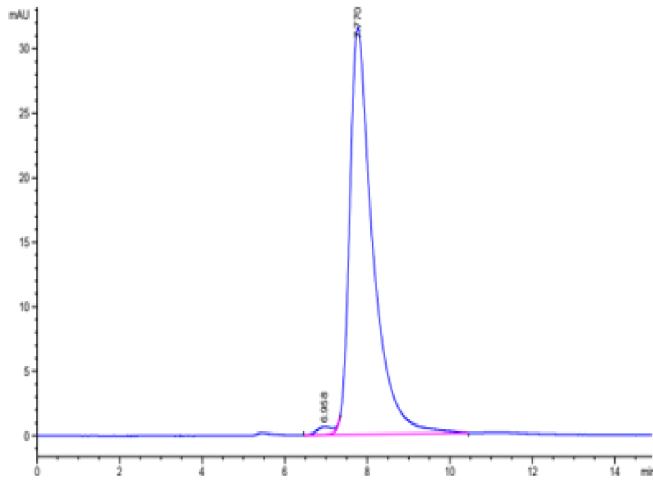
### Tris-Bis PAGE



Canine GRP-10 proform on Tris-Bis PAGE under reduced condition. The purity is greater than 95%.

### SEC-HPLC

Assay Data



The purity of Canine GRP-10 proform is greater than 95% as determined by SEC-HPLC.