

# Cynomolgus GM-CSF R alpha Protein

Cat. No. GSF-CM1RA

## Description

<b>Source</b>	Recombinant Cynomolgus GM-CSF R alpha Protein is expressed from HEK293 with His tag at the C-Terminus. It contains Leu20-Ser317.
<b>Accession</b>	A0A2K5UC70
<b>Molecular Weight</b>	The protein has a predicted MW of 35.47 kDa. Due to glycosylation, the protein migrates to 60-70 kDa based on Bis-Tris PAGE result.
<b>Endotoxin</b>	Less than 1EU per µg by the LAL method.
<b>Purity</b>	> 95% as determined by Bis-Tris PAGE > 95% as determined by HPLC

## Formulation and Storage

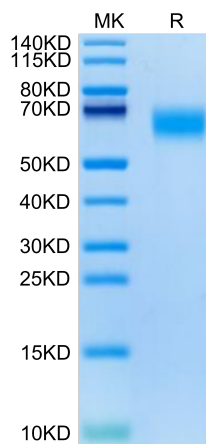
<b>Formulation</b>	Lyophilized from 0.22µm filtered solution in PBS (pH 7.4). Normally 8% trehalose is added as protectant before lyophilization.
<b>Reconstitution</b>	Centrifuge the tube before opening. Reconstituting to a concentration more than 100 µg/ml is recommended. Dissolve the lyophilized protein in distilled water.
<b>Storage</b>	-20 to -80°C for 12 months as supplied from date of receipt. -80°C for 3 months after reconstitution. Recommend to aliquot the protein into smaller quantities for optimal storage. Please minimize freeze-thaw cycles.

## Background

In the first trimester, the GM-CSF-R was found to be present on villous cytotrophoblast and all populations of extravillous trophoblast. Expression by villous syncytiotrophoblast was weak or absent, but this increased markedly by term. GM-CSF-R were also expressed by fetal Hofbauer cells within the mesenchyme of the chorionic villi and by uterine glandular epithelium and decidual macrophages within maternal decidua.

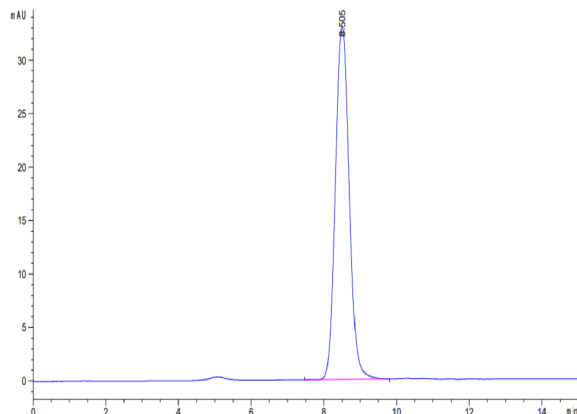
## Assay Data

### Bis-Tris PAGE



Cynomolgus GM-CSF R alpha on Bis-Tris PAGE under reduced condition. The purity is greater than 95%.

### SEC-HPLC



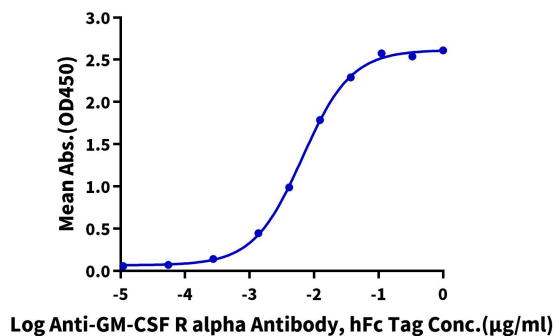
The purity of Cynomolgus GM-CSF R alpha is greater than 95% as determined by SEC-HPLC.

Assay Data

ELISA Data

**Cynomolgus GM-CSF R alpha, His Tag ELISA**

0.05µg Cynomolgus GM-CSF R alpha, His Tag Per Well



Immobilized Cynomolgus GM-CSF R alpha, His Tag at 0.5µg/ml (100µl/well) on the plate. Dose response curve for Anti-GM-CSF R alpha Antibody, hFc Tag with the EC50 of 6.6ng/ml determined by ELISA.