

# Cynomolgus Her2/ErbB2 Protein

Cat. No. HER-CM102



## Description

<b>Source</b>	Recombinant Cynomolgus Her2/ErbB2 Protein is expressed from HEK293 with His tag at the C-Terminus. It contains Thr23-Thr652.
<b>Accession</b>	XP_005584091.2
<b>Molecular Weight</b>	The protein has a predicted MW of 70.4 kDa. Due to glycosylation, the protein migrates to 85-105 kDa based on Bis-Tris PAGE result.
<b>Endotoxin</b>	Less than 1EU per $\mu\text{g}$ by the LAL method.
<b>Purity</b>	> 95% as determined by Bis-Tris PAGE > 95% as determined by HPLC

## Formulation and Storage

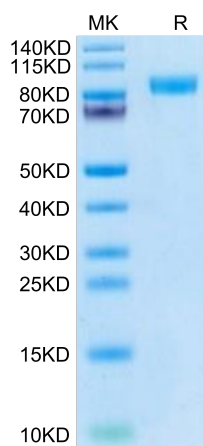
<b>Formulation</b>	Lyophilized from 0.22 $\mu\text{m}$ filtered solution in PBS (pH 7.4). Normally 8% trehalose is added as protectant before lyophilization.
<b>Reconstitution</b>	Centrifuge the tube before opening. Reconstituting to a concentration more than 100 $\mu\text{g}/\text{ml}$ is recommended. Dissolve the lyophilized protein in distilled water.
<b>Storage</b>	-20 to -80°C for 12 months as supplied from date of receipt. -80°C for 3 months after reconstitution. Recommend to aliquot the protein into smaller quantities for optimal storage. Please minimize freeze-thaw cycles.

## Background

ErbB2, also called Neu and Her2 (human epidermal growth factor receptor 2), is a type I membrane glycoprotein that is a member of the ErbB family of tyrosine kinase receptors. ErbB family members serve as receptors for the epidermal growth factor (EGF) family of growth factors. Upon ERBB2 activation, the MEMO1-RHOA-DIAPH1 signaling pathway elicits the phosphorylation and thus the inhibition of GSK3B at cell membrane.

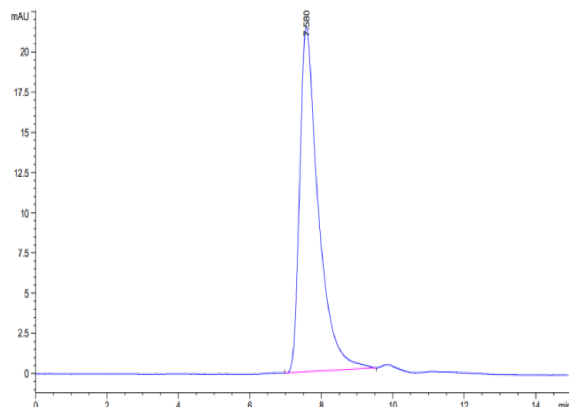
## Assay Data

### Bis-Tris PAGE



Cynomolgus Her2 on Bis-Tris PAGE under reduced condition. The purity is greater than 95%.

### SEC-HPLC



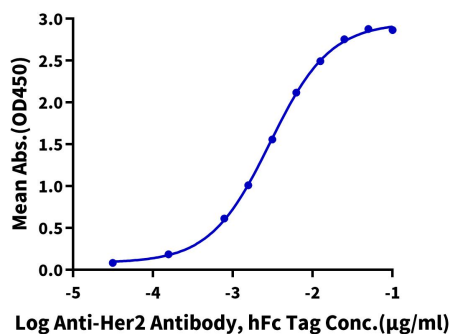
The purity of Cynomolgus Her2 is greater than 95% as determined by SEC-HPLC.

Assay Data

ELISA Data

**Cynomolgus Her2, His Tag ELISA**

0.05µg Cynomolgus Her2, His Tag Per Well



Immobilized Cynomolgus Her2, His Tag at 0.5µg/ml (100µl/Well) on the plate. Dose response curve for Anti-Her2 Antibody, hFc Tag with the EC50 of 2.9ng/ml determined by ELISA.