

# Human Her2/ErbB2 Protein

Cat. No. HER-HM102



## Description

<b>Source</b>	Recombinant Human Her2/ErbB2 Protein is expressed from HEK293 with His tag at the C-terminus.
	It contains Thr23-Thr652.
<b>Accession</b>	P04626-1
<b>Molecular Weight</b>	The protein has a predicted MW of 70.96 kDa. Due to glycosylation, the protein migrates to 80-110 kDa based on Bis-Tris PAGE result.
<b>Endotoxin</b>	Less than 0.1 EU per µg by the LAL method.
<b>Purity</b>	> 95% as determined by Bis-Tris PAGE
	> 95% as determined by HPLC

## Formulation and Storage

<b>Formulation</b>	Supplied as 0.22 µm filtered solution in PBS (pH 7.4).
<b>Storage</b>	Valid for 12 months from date of receipt when stored at -80°C. Recommend to aliquot the protein into smaller quantities for optimal storage. Please minimize freeze-thaw cycles.

## Background

ErbB2, also called Neu and Her2 (human epidermal growth factor receptor 2), is a type I membrane glycoprotein that is a member of the ErbB family of tyrosine kinase receptors. ErbB family members serve as receptors for the epidermal growth factor (EGF) family of growth factors. Upon ERBB2 activation, the MEMO1-RHOA-DIAPH1 signaling pathway elicits the phosphorylation and thus the inhibition of GSK3B at cell membrane. This prevents the phosphorylation of APC and CLASP2, allowing its association with the cell membrane.

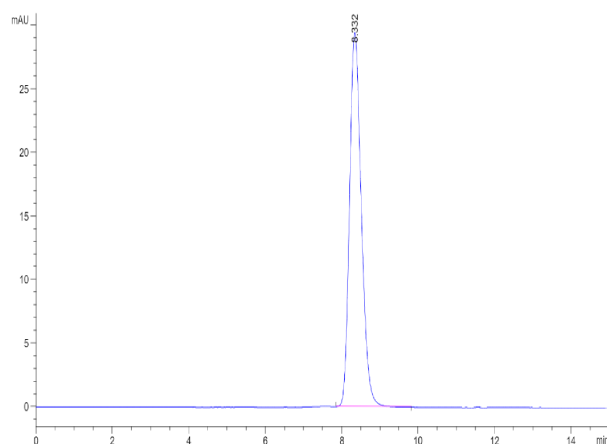
## Assay Data

### Bis-Tris PAGE



Human Her2 on Bis-Tris PAGE under reduced condition. The purity is greater than 95%.

### SEC-HPLC



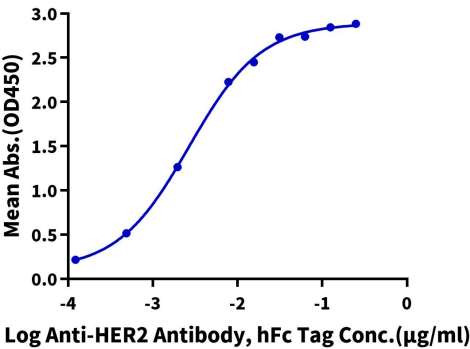
The purity of Human Her2 is greater than 95% as determined by SEC-HPLC.

Assay Data

ELISA Data

Human Her2, His Tag ELISA

0.05µg Human Her2, His Tag Per Well



Immobilized Human Her2, His Tag at 0.5µg/ml (100µl/well) on the plate. Dose response curve for Anti-HER2 Antibody, hFc Tag with the EC50 of 2.7ng/ml determined by ELISA.