

Human Her3/ErbB3 Protein

Cat. No. HER-HM403

Description

| | |
|-------------------------|---|
| Source | Recombinant Human Her3/ErbB3 is expressed from HEK293 with His tag and Avi tag at the C-Terminus It contains Ser20-Thr643. |
| Accession | P21860-1 |
| Molecular Weight | The protein has a predicted MW of 71.6 kDa. Due to glycosylation, the protein migrates to 90-110 kDa based on Bis-Tris PAGE result. |
| Endotoxin | Less than 1 EU per µg by the LAL method. |
| Purity | >95% as determined by Bis-Tris PAGE; >95% as determined by HPLC |

Formulation and Storage

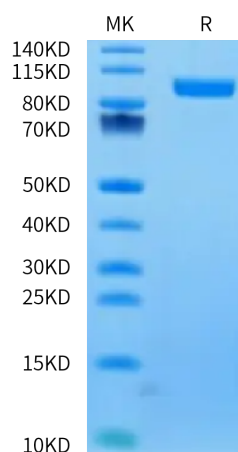
| | |
|-----------------------|---|
| Formulation | Lyophilized from 0.22 µm filtered solution in PBS (pH 7.4). Normally 8% trehalose is added as protectant before lyophilization. |
| Reconstitution | Centrifuge the tube before opening. Reconstituting to a concentration more than 100 µg/ml is recommended. Dissolve the lyophilized protein in distilled water. |
| Storage | -20 to -80°C for 12 months as supplied from date of receipt. -80°C for 3 months after reconstitution. Recommend to aliquot the protein into smaller quantities for optimal storage. Please minimize freeze-thaw cycles. |

Background

Her3, also called ErbB3, is a type I membrane glycoprotein that is a member of the ErbB family of tyrosine kinase receptors. Her3 is expressed in keratinocytes, melanocytes, skeletal muscle cells, embryonic myoblasts and Schwann cells. Monomeric Her3 serves as a low affinity receptor for the heregulins (HRG).

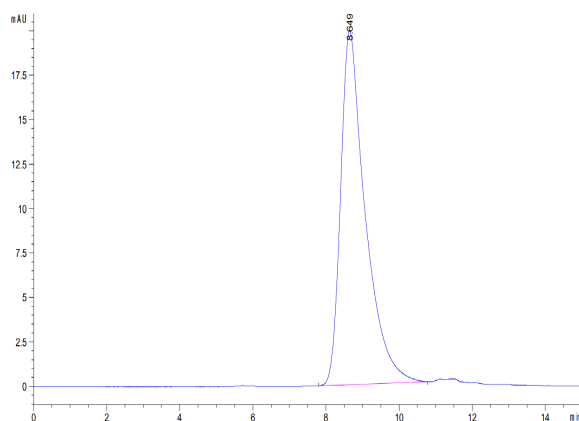
Assay Data

Bis-Tris PAGE



Human Her3 on Bis-Tris PAGE under reduced condition. The purity is greater than 95%.

SEC-HPLC



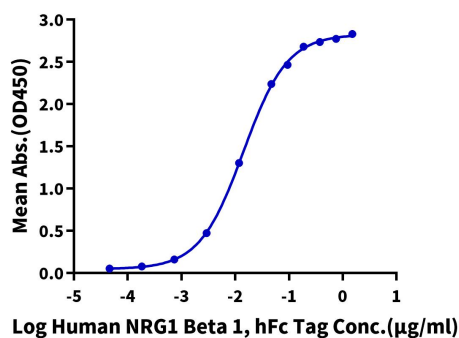
The purity of Human Her3 is greater than 95% as determined by SEC-HPLC.

Assay Data

ELISA Data

Human Her3, His Tag ELISA

0.5µg Human Her3, His Tag Per Well

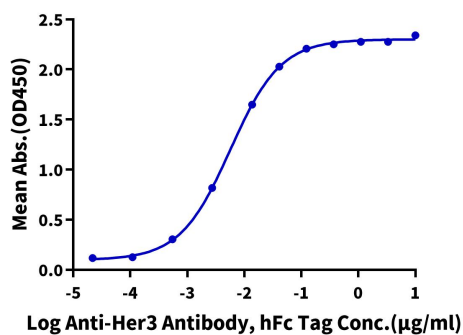


Immobilized Human Her3, His Tag at 5 µg/ml (100 µl/well) on the plate. Dose response curve for Human NRG1 Beta 1, hFc Tag with the EC50 of 14.2ng/ml determined by ELISA (QC Test).

ELISA Data

Human Her3, His Tag ELISA

0.1µg Human Her3, His Tag Per Well



Immobilized Human Her3, His Tag at 1 µg/ml (100 µl/Well) on the plate. Dose response curve for Anti-Her3 Antibody, hFc Tag with the EC50 of 5.7 ng/ml determined by ELISA.