

# Biotinylated Rhesus macaque HLA-G&B2M&Peptide (RIIPRHLQL) Monomer Protein



Cat. No. HLG-RM41CB

## Description

<b>Source</b>	Recombinant Biotinylated Rhesus macaque HLA-G&B2M&Peptide (RIIPRHLQL) Monomer Protein is expressed from HEK293 with His tag and Avi tag at the C-Terminus. It contains Gly25-Thr305 (HLA-G), Ile21-Met119 (B2M) and RIIPRHLQL peptide.
<b>Accession</b>	O02948(HLA-G)&Q6V7J5(B2M)&RIIPRHLQL
<b>Molecular Weight</b>	The protein has a predicted MW of 50.5 kDa. Due to glycosylation, the protein migrates to 55-65 kDa based on Tris-Bis PAGE result.
<b>Endotoxin</b>	Less than 1EU per µg by the LAL method.
<b>Purity</b>	> 95% as determined by Tris-Bis PAGE > 95% as determined by HPLC

## Formulation and Storage

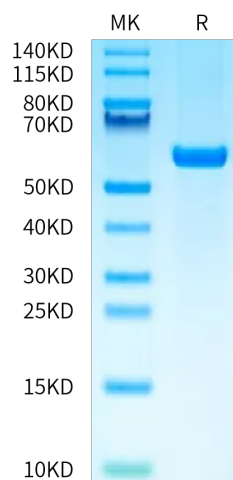
<b>Formulation</b>	Supplied as 0.22 µm filtered solution in PBS (pH 7.4).
<b>Storage</b>	Valid for 12 months from date of receipt when stored at -80°C. Recommend to aliquot the protein into smaller quantities for optimal storage. Please minimize freeze-thaw cycles.

## Background

HLA-G is a molecule that was first known to confer protection to the fetus from destruction by the immune system of its mother, thus critically contributing to fetal-maternal tolerance. The first functional finding constituted the basis for HLA-G research and can be summarized as such: HLA-G, membrane-bound or soluble, strongly binds its inhibitory receptors on immune cells (NK, T, B, monocytes/dendritic cells), inhibits the functions of these effectors, and so induces immune inhibition.

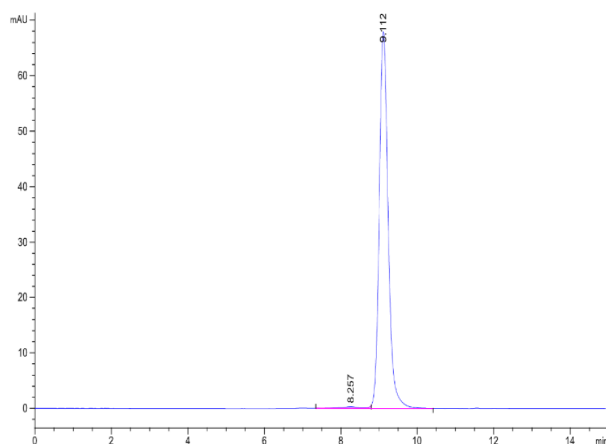
## Assay Data

### Tris-Bis PAGE



Biotinylated Rhesus macaque HLA-G&B2M&Peptide (RIIPRHLQL) Monomer on Tris-Bis PAGE under reduced condition. The purity is greater than 95%.

### SEC-HPLC



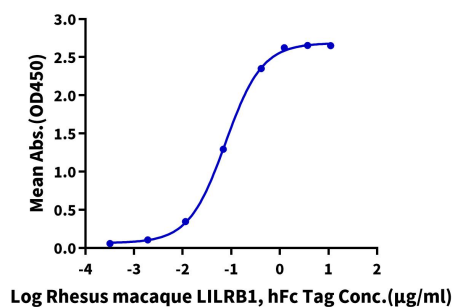
The purity of Biotinylated Rhesus macaque HLA-G&B2M&Peptide (RIIPRHLQL) Monomer is greater than 95% as determined by SEC-HPLC.

Assay Data

ELISA Data

**Biotinylated Rhesus macaque HLA-G&B2M&Peptide (RIIPRHLQL), His Tag ELISA**

0.2µg Biotinylated Rhesus macaque HLA-G&B2M&Peptide (RIIPRHLQL), His Tag Per Well



Immobilized Biotinylated Rhesus macaque HLA-G&B2M&Peptide (RIIPRHLQL), His Tag at 2µg/ml (100µl/well) on the streptavidin precoated plate (5µg/ml). Dose response curve for Rhesus macaque LILRB1, hFc Tag with the EC50 of 75.8ng/ml determined by ELISA.