

Cynomolgus IgE Protein

Cat. No. IGE-CM401



Description

Source	Recombinant Cynomolgus IgE Protein is expressed from HEK293 with His tag and Avi tag at the C-Terminus. It contains Lys208-Lys429.
Accession	G8F4W7
Molecular Weight	The protein has a predicted MW of 27.9 kDa. Due to glycosylation, the protein migrates to 35-40 kDa based on Bis-Tris PAGE result.
Endotoxin	Less than 0.1 EU per µg by the LAL method.
Purity	> 95% as determined by Bis-Tris PAGE > 95% as determined by HPLC

Formulation and Storage

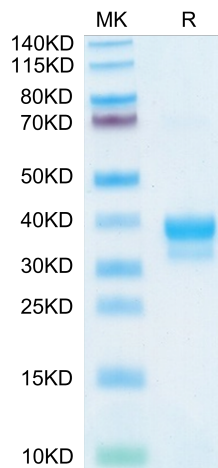
Formulation	Lyophilized from 0.22µm filtered solution in PBS (pH 7.4). Normally 8% trehalose is added as protectant before lyophilization.
Reconstitution	Centrifuge the tube before opening. Reconstituting to a concentration more than 100 µg/ml is recommended. Dissolve the lyophilized protein in distilled water.
Storage	-20 to -80°C for 12 months as supplied from date of receipt. -80°C for 3 months after reconstitution. Recommend to aliquot the protein into smaller quantities for optimal storage. Please minimize freeze-thaw cycles.

Background

Immunoglobulin E (IgE) is well known for its role in allergic disease, the manifestations of which are mediated through its two Fc receptors, FcεRI and CD23 (FcεRII). IgE and its interactions with these receptors are therefore potential targets for therapeutic intervention, and exciting progress has been made in this direction. Furthermore, recent structural studies of IgE-Fc, the two receptors, and of their complexes, have revealed a remarkable degree of plasticity at the IgE-CD23 interface and an even more remarkable degree of dynamic flexibility within the IgE molecule.

Assay Data

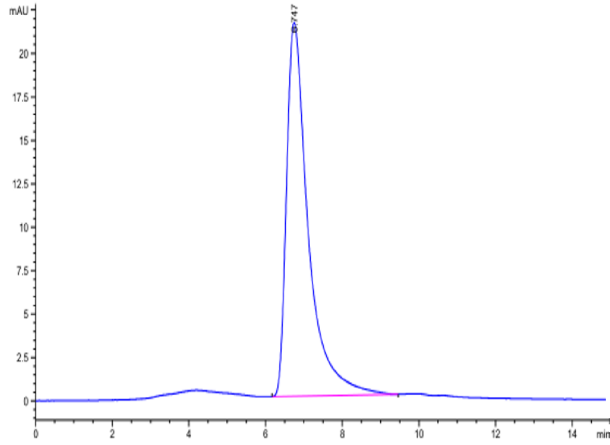
Bis-Tris PAGE



Cynomolgus IgE on Bis-Tris PAGE under reduced condition. The purity is greater than 95%.

SEC-HPLC

Assay Data



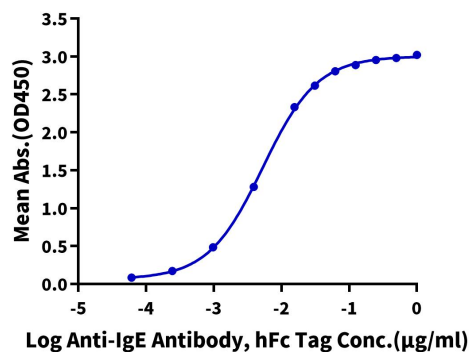
The purity of Cynomolgus IgE is greater than 95% as determined by SEC-HPLC.

Assay Data

ELISA Data

Cynomolgus IgE, His Tag ELISA

0.05µg Cynomolgus IgE, His Tag Per Well



Immobilized Cynomolgus IgE, His Tag at 0.5µg/ml (100µl/well) on the plate. Dose response curve for Anti-IgE Antibody, hFc Tag with the EC50 of 5.3ng/ml determined by ELISA (QC Test).