

Biotinylated Human IgE Protein

Cat. No. IGE-HM401B

Description	
Source	Recombinant Biotinylated Human IgE Protein is expressed from HEK293 with His and Avi tag at the C-Terminus. It contains Cys209-Lys428.
Accession	P01854-1
Molecular Weight	The protein has a predicted MW of 27.8 kDa. Due to glycosylation, the protein migrates to 32-38 kDa based on Tris-Bis PAGE result.
Endotoxin	Less than 1EU per μ g by the LAL method.
Purity	> 95% as determined by Tris-Bis PAGE > 95% as determined by HPLC

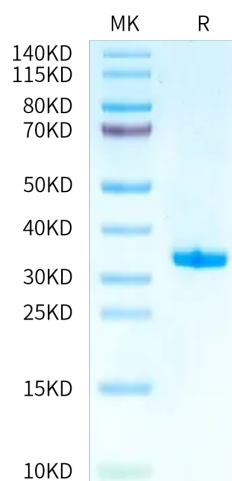
Formulation and Storage	
Formulation	Lyophilized from 0.22 μ m filtered solution in PBS (pH 7.4). Normally 8% trehalose is added as protectant before lyophilization.
Reconstitution	Centrifuge the tube before opening. Reconstituting to a concentration more than 100 μ g/ml is recommended. Dissolve the lyophilized protein in distilled water.
Storage	-20 to -80°C for 12 months as supplied from date of receipt. -80°C for 3-6 months after reconstitution. 2-8°C for 2-7 days after reconstitution. Recommend to aliquot the protein into smaller quantities for optimal storage. Please minimize freeze-thaw cycles.

Background

Immunoglobulin E (IgE) is well known for its role in allergic disease, the manifestations of which are mediated through its two Fc receptors, Fc ϵ RI and CD23 (Fc ϵ R2). IgE and its interactions with these receptors are therefore potential targets for therapeutic intervention, and exciting progress has been made in this direction. Furthermore, recent structural studies of IgE-Fc, the two receptors, and of their complexes, have revealed a remarkable degree of plasticity at the IgE-CD23 interface and an even more remarkable degree of dynamic flexibility within the IgE molecule.

Assay Data

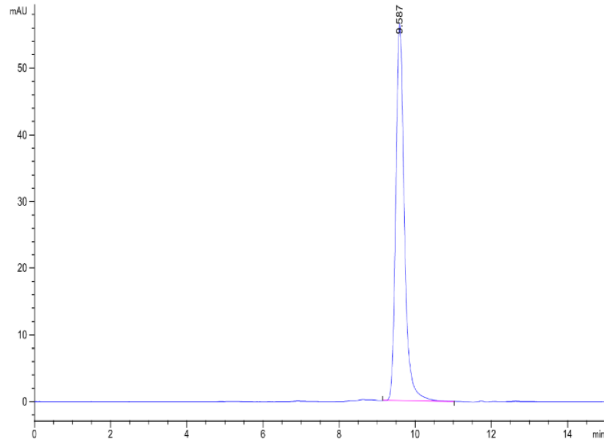
Tris-Bis PAGE



Biotinylated Human IgE on Tris-Bis PAGE under reduced condition. The purity is greater than 95%.

SEC-HPLC

Assay Data



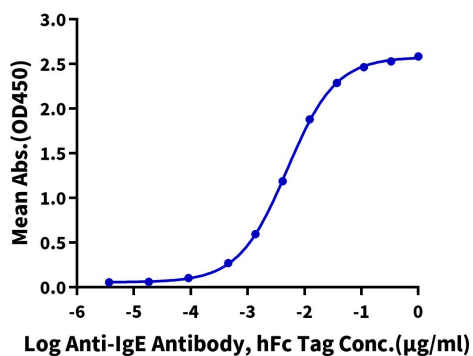
The purity of Biotinylated Human IgE is greater than 95% as determined by SEC-HPLC.

Assay Data

ELISA Data

Biotinylated Human IgE, His Tag ELISA

0.05µg Biotinylated Human IgE, His Tag Per Well



Immobilized Biotinylated Human IgE, His Tag at 0.5µg/ml (100µl/well) on the streptavidin precoated plate (5µg/ml). Dose response curve for Anti-IgE Antibody, hFc Tag with the EC50 of 5.0ng/ml determined by ELISA.