

Biotinylated Mouse IgE Protein, Ultra Low Endotoxin

Cat. No. IGE-MM401B-UL

Description

Source	Recombinant Biotinylated Mouse IgE Protein is expressed from HEK293 with with His tag and Avi tag at the C-terminus. It contains Asp198-Ser421.
Accession	P06336
Molecular Weight	The protein has a predicted MW of 28.2 kDa. Due to glycosylation, the protein migrates to 35-45 kDa based on Bis-Tris PAGE result.
Endotoxin	Less than 0.01 EU per µg by the LAL method.
Purity	> 95% as determined by Bis-Tris PAGE > 95% as determined by HPLC

Formulation and Storage

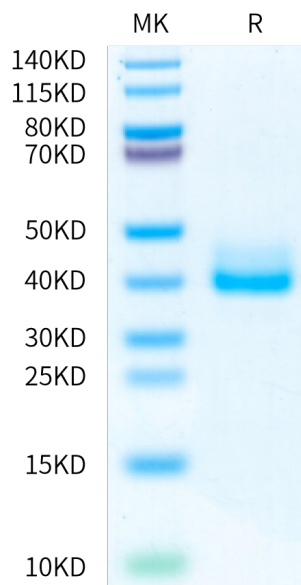
Formulation	Lyophilized from 0.22 µm filtered solution in PBS (pH 7.4). Normally 8% trehalose is added as protectant before lyophilization.
Reconstitution	Dissolve the lyophilized protein in distilled water. Please refer to the Certificate of Analysis for detailed instructions.
Storage	-20 to -80°C for 12 months as supplied from date of receipt. -80°C for 3 months after reconstitution. Recommend to aliquot the protein into smaller quantities for optimal storage. Please minimize freeze-thaw cycles.

Background

Immunoglobulin E (IgE) is well known for its role in allergic disease, the manifestations of which are mediated through its two Fc receptors, FcεRI and CD23 (FcεRII). IgE and its interactions with these receptors are therefore potential targets for therapeutic intervention, and exciting progress has been made in this direction. Furthermore, recent structural studies of IgE-Fc, the two receptors, and of their complexes, have revealed a remarkable degree of plasticity at the IgE-CD23 interface and an even more remarkable degree of dynamic flexibility within the IgE molecule.

Assay Data

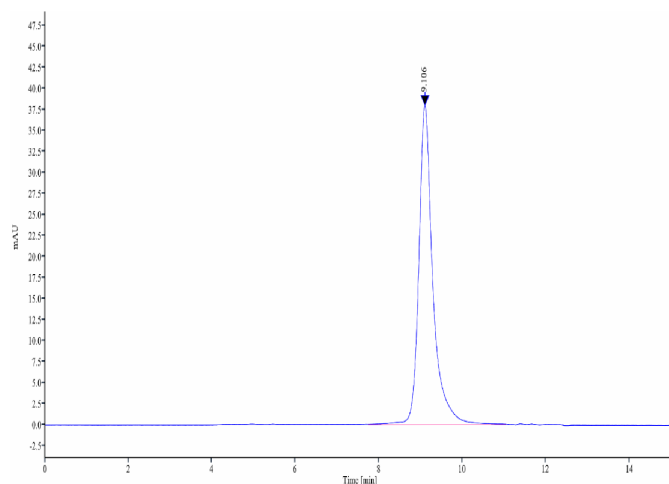
Bis-Tris PAGE



Biotinylated Mouse IgE on Bis-Tris PAGE under reduced condition. The purity is greater than 95%.

SEC-HPLC

Assay Data

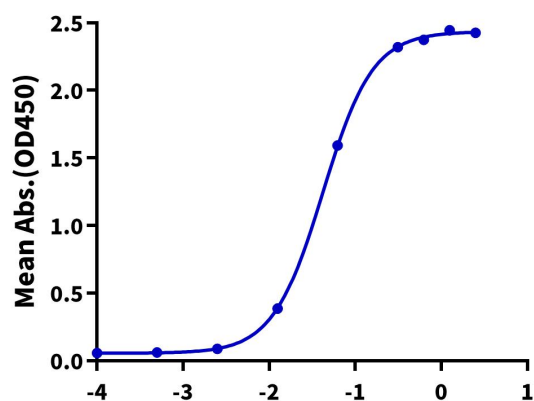


The purity of Biotinylated Mouse IgE is greater than 95% as determined by SEC-HPLC.

ELISA Data

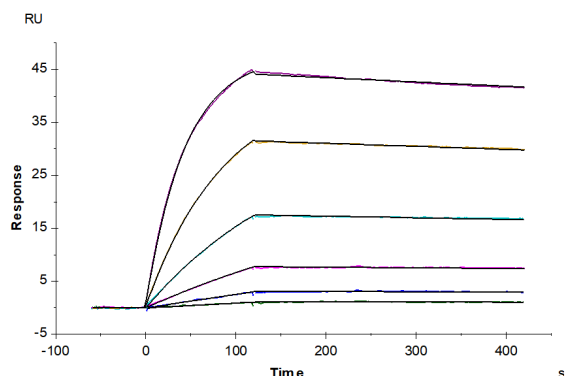
Biotinylated Mouse IgE, His Avi Tag ELISA

0.1µg Human Fc epsilon RI alpha, hFc Tag Per Well



Immobilized Human Fc epsilon RI alpha, hFc Tag at 1µg/ml (100µl/well) on the plate. Dose response curve for Biotinylated Mouse IgE, His Avi Tag with the EC50 of 42.0ng/ml determined by ELISA.

SPR Data



Human Fc epsilon RI alpha, hFc Tag captured on CM5 Chip via Protein A can bind Biotinylated Mouse IgE, His-Avi Tag with an affinity constant of 0.42 nM as determined in SPR assay (Biacore T200).