

Cynomolgus IGF1R/CD221 Protein

Cat. No. IGF-CM41R

Description

Source	Recombinant Cynomolgus IGF1R/CD221 Protein is expressed from HEK293 with His tag at the C-Terminus. It contains Glu31-Asn908.
Accession	G7P9I7
Molecular Weight	The protein has a predicted MW of 80.59 kDa (alpha subunit) and 19.28 kDa (beta subunit). Due to glycosylation, the protein migrates to 48-58 kDa (beta subunit) and 100-115 kDa (alpha subunit) and 130-150 kDa based on Tris-Bis PAGE result.
Endotoxin	Less than 1EU per µg by the LAL method.
Purity	> 95% as determined by Tris-Bis PAGE > 95% as determined by HPLC

Formulation and Storage

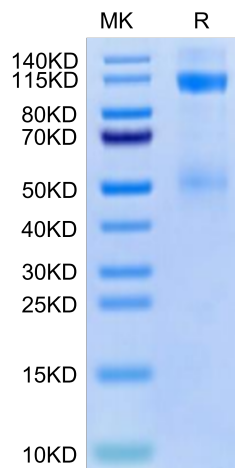
Formulation	Lyophilized from 0.22µm filtered solution in PBS (pH 7.4). Normally 8% trehalose is added as protectant before lyophilization.
Reconstitution	Centrifuge the tube before opening. Reconstituting to a concentration more than 100 µg/ml is recommended. Dissolve the lyophilized protein in distilled water.
Storage	-20 to -80°C for 12 months as supplied from date of receipt. -20 to -80°C for 3-6 months in unopened state after reconstitution. 2-8°C for 2-7 days after reconstitution. Recommend to aliquot the protein into smaller quantities for optimal storage. Please minimize freeze-thaw cycles.

Background

The type 1 IGF receptor (IGF1R) is a transmembrane tyrosine kinase that is frequently overexpressed by tumours, and mediates proliferation and apoptosis protection. IGF signalling also influences hypoxia signalling, protease secretion, tumour cell motility and adhesion, and thus can affect the propensity for invasion and metastasis. Therefore, the IGF1R is now an attractive anti-cancer treatment target.

Assay Data

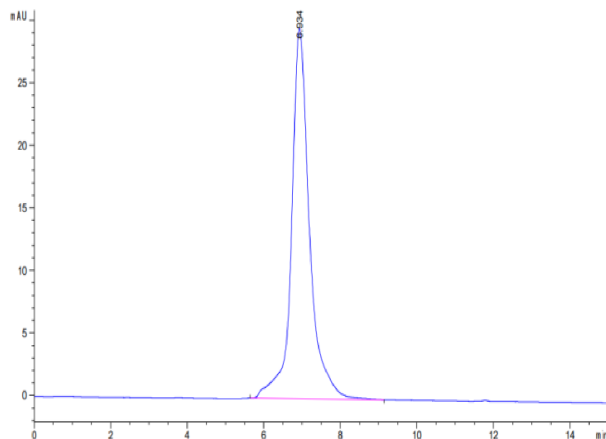
Tris-Bis PAGE



Cynomolgus IGF1R on Tris-Bis PAGE under reduced condition. The purity is greater than 95%.

SEC-HPLC

Assay Data



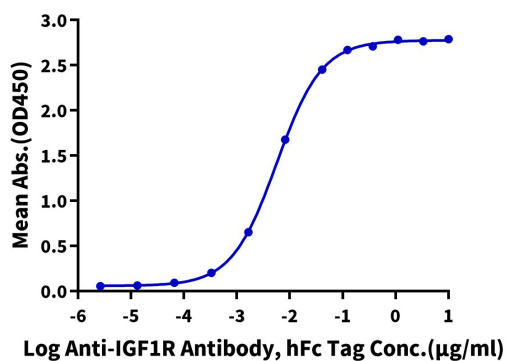
The purity of Cynomolgus IGF1R is greater than 95% as determined by SEC-HPLC.

Assay Data

ELISA Data

Cynomolgus IGF1R, His Tag ELISA

0.05 μ g Cynomolgus IGF1R, His Tag Per Well



Immobilized Cynomolgus IGF1R, His Tag at 0.5 μ g/ml (100 μ l/well) on the plate. Dose response curve for Anti-IGF1R Antibody, hFc Tag with the EC50 of 5.7ng/ml determined by ELISA.