

Human IGFI Protein

Cat. No. IGF-HE001



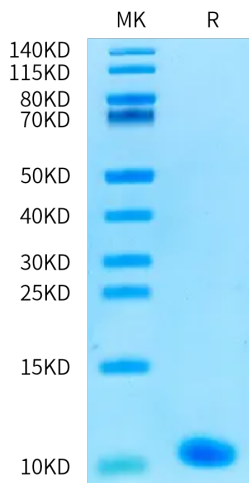
Description	
Source	Recombinant Human IGFI Protein is expressed from E.coli without tag. It contains Gly49-Ala118.
Accession	P05019-1
Molecular Weight	The protein has a predicted MW of 7.65 kDa. The protein migrates to 8-12 kDa based on Bis-Tris PAGE result.
Endotoxin	Less than 0.1 EU per µg by the LAL method.
Purity	> 95% as determined by Bis-Tris PAGE

Formulation and Storage	
Formulation	Supplied as 0.22 µm filtered solution in PBS (pH 7.4).
Storage	Valid for 12 months from date of receipt when stored at -80°C. Recommend to aliquot the protein into smaller quantities for optimal storage. Please minimize freeze-thaw cycles.

Background	
The insulin family consists of insulin, insulin-like growth factor 1 (IGF-1), insulin-like growth factor 2 (IGF-2), their receptors (IR, IGF-1R and IGF-2R), and their binding proteins. Insulin-like growth factor I (IGF-I) is a polypeptide hormone produced mainly by the liver in response to the endocrine GH stimulus, but it is also secreted by multiple tissues for autocrine/paracrine purposes.	

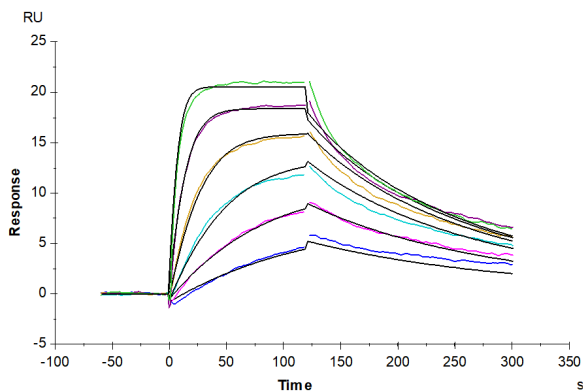
Assay Data

Bis-Tris PAGE



Human IGFI on Bis-Tris PAGE under reduced condition. The purity is greater than 95%.

SPR Data



Human IGF1R, His Tag captured on CM5 Chip via Protein A can bind Human IGFI, No Tag with an affinity constant of 8.70 nM as determined in SPR assay (Biacore T200).