

Cat. No. IGF-HM202

Description

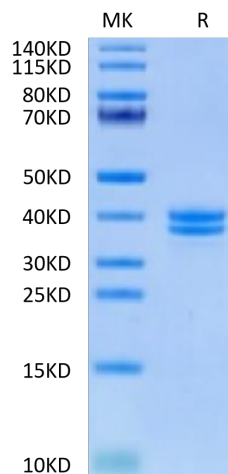
| | |
|-------------------------|---|
| Source | Recombinant Human IGFII Protein is expressed from HEK293 with hFc tag at the N-Terminus. It contains Ala25-Glu91. |
| Accession | P01344-1 |
| Molecular Weight | The protein has a predicted MW of 33.00 kDa. Due to glycosylation, the protein migrates to 35-45 kDa based on Tris-Bis PAGE result. |
| Endotoxin | Less than 1EU per µg by the LAL method. |
| Purity | > 95% as determined by Tris-Bis PAGE > 95% as determined by HPLC |

Formulation and Storage

| | |
|-----------------------|---|
| Formulation | Lyophilized from 0.22 µm filtered solution in PBS (pH 7.4). Normally 8% trehalose is added as protectant before lyophilization. |
| Reconstitution | Centrifuge the tube before opening. Reconstituting to a concentration more than 100 µg/ml is recommended. Dissolve the lyophilized protein in distilled water. |
| Storage | -20 to -80°C for 12 months as supplied from date of receipt. -20 to -80°C for 3-6 months in unopened state after reconstitution. 2-8°C for 2-7 days after reconstitution. Recommend to aliquot the protein into smaller quantities for optimal storage. Please minimize freeze-thaw cycles. |

Background

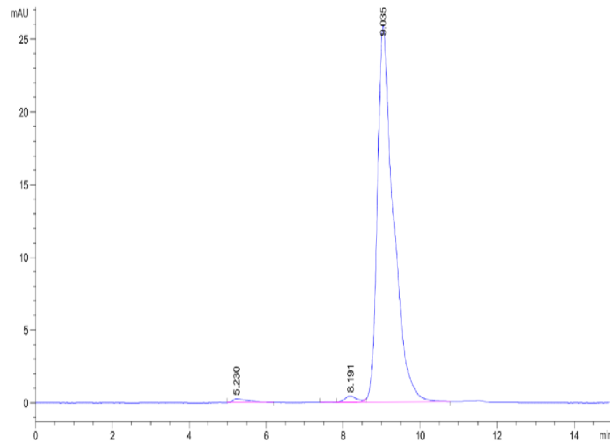
The insulin family consists of insulin, insulin-like growth factor 1 (IGF-1), insulin-like growth factor 2 (IGF-2), their receptors (IR, IGF-1R and IGF-2R), and their binding proteins. All three ligands are involved in cell proliferation, apoptosis, protein synthesis and metabolism due to their homologous sequences and structural similarities. Insulin-like growth factor 2, a member of the insulin family, plays an important role in embryonic development, metabolic disorders, and tumorigenesis by combining with three receptors with different degrees of affinity.

Assay Data**Tris-Bis PAGE**

Human IGFII on Tris-Bis PAGE under reduced condition. The purity is greater than 95%.

SEC-HPLC

Assay Data



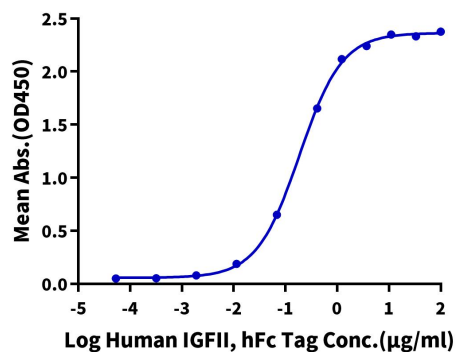
The purity of Human IGFII is greater than 95% as determined by SEC-HPLC.

Assay Data

ELISA Data

Human IGFII, hFc Tag ELISA

0.2µg Human IGFBP-3, His Tag Per Well



Immobilized Human IGFBP-3, His Tag at 2µg/ml (100µl/well) on the plate. Dose response curve for Human IGF II, hFc Tag with the EC50 of 0.19µg/ml determined by ELISA.