

# Biotinylated Human IGF1R/CD221 Protein

Cat. No. IGF-HM41RB

## Description

<b>Source</b>	Recombinant Biotinylated Human IGF1R/CD221 Protein is expressed from HEK293 with His tag and Avi tag at the C-Terminus. It contains Glu31-Asn932.
<b>Accession</b>	P08069
<b>Molecular Weight</b>	The protein has a predicted MW of 105.8 kDa (alpha subunit) and 23 kDa (beta subunit). Due to glycosylation, the protein migrates to 110-120 kDa (alpha subunit) and 52-55 kDa (beta subunit) based on Bis-Tris PAGE result.
<b>Endotoxin</b>	Less than 1EU per µg by the LAL method.
<b>Purity</b>	> 95% as determined by Bis-Tris PAGE > 95% as determined by HPLC

## Formulation and Storage

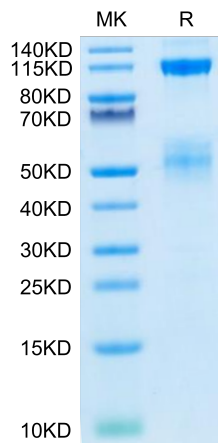
<b>Formulation</b>	Lyophilized from 0.22µm filtered solution in PBS (pH 7.4). Normally 8% trehalose is added as protectant before lyophilization.
<b>Reconstitution</b>	Centrifuge the tube before opening. Reconstituting to a concentration more than 100 µg/ml is recommended. Dissolve the lyophilized protein in distilled water.
<b>Storage</b>	-20 to -80°C for 12 months as supplied from date of receipt. -80°C for 3 months after reconstitution. Recommend to aliquot the protein into smaller quantities for optimal storage. Please minimize freeze-thaw cycles.

## Background

The type 1 IGF receptor (IGF1R) is a transmembrane tyrosine kinase that is frequently overexpressed by tumours, and mediates proliferation and apoptosis protection. IGF signalling also influences hypoxia signalling, protease secretion, tumour cell motility and adhesion, and thus can affect the propensity for invasion and metastasis. Therefore, the IGF1R is now an attractive anti-cancer treatment target.

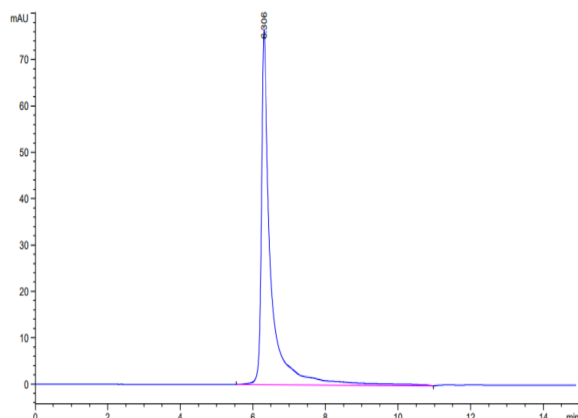
## Assay Data

### Bis-Tris PAGE



Biotinylated Human IGF1R on Bis-Tris PAGE under reduced condition. The purity is greater than 95%.

### SEC-HPLC



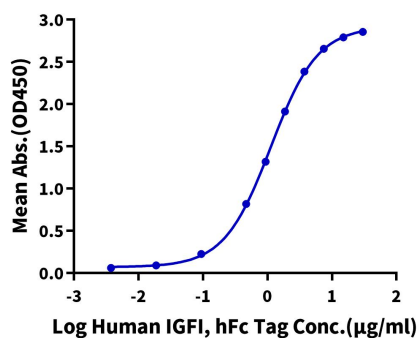
The purity of Biotinylated Human IGF1R is greater than 95% as determined by SEC-HPLC.

Assay Data

ELISA Data

**Biotinylated Human IGF1R, His Tag ELISA**

0.5µg Biotinylated Human IGF1R, His Tag Per Well

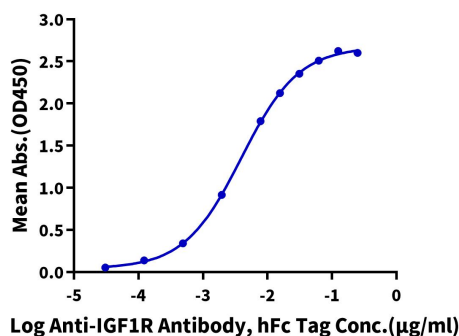


Immobilized Biotinylated Human IGF1R, His Tag at 5µg/ml (100µl/well) on the streptavidin precoated plate (5µg/ml). Dose response curve for Human IGF-I, hFc Tag with the EC50 of 1.13µg/ml determined by ELISA (QC Test).

ELISA Data

**Biotinylated Human IGF1R, His Tag ELISA**

0.1µg Biotinylated Human IGF1R, His Tag Per Well



Immobilized Biotinylated Human IGF1R, His Tag at 1µg/ml (100µl/Well) on streptavidin (5µg/ml) precoated plate. Dose response curve for Anti-IGF1R Antibody, hFc Tag with the EC50 of 3.9ng/ml determined by ELISA.