

Canine IL-13 Protein

Cat. No. IL1-DM113



Description

Source	Recombinant Canine IL-13 Protein is expressed from HEK293 with His tag at the C-terminus. It contains Ser19-Arg131.
Accession	Q9N0W9
Molecular Weight	The protein has a predicted MW of 14.05 kDa. Due to glycosylation, the protein migrates to 35-45 kDa based on Bis-Tris PAGE result.
Endotoxin	Less than 1EU per µg by the LAL method.
Purity	>95% as determined by Bis-Tris PAGE >95% as determined by HPLC

Formulation and Storage

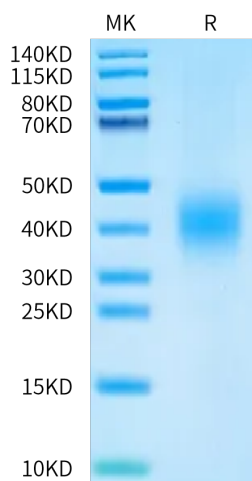
Formulation	Supplied as 0.22 µm filtered solution in PBS (pH 7.4).
Storage	Valid for 12 months from date of receipt when stored at -80°C. Recommend to aliquot the protein into smaller quantities for optimal storage. Please minimize freeze-thaw cycles.

Background

Interleukin-13 (IL-13) is a monomeric 17 kDa immunoregulatory cytokine that plays a key role in the pathogenesis of allergy, cancer, and tissue fibrosis. It is secreted by several helper T cell subsets, NK cells, mast cells, eosinophils, basophils, and visceral smooth muscle cells. Inhibits inflammatory cytokine production. Synergizes with IL2 in regulating interferon-gamma synthesis. May be critical in regulating inflammatory and immune responses. Positively regulates IL31RA expression in macrophages (By similarity).

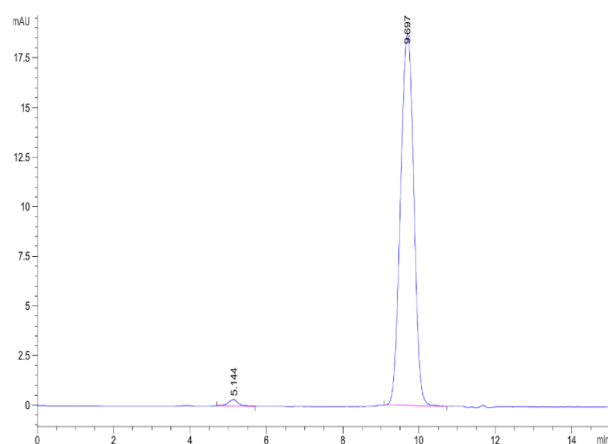
Assay Data

Bis-Tris PAGE



Canine IL-13 on Bis-Tris PAGE under reduced condition. The purity is greater than 95%.

SEC-HPLC



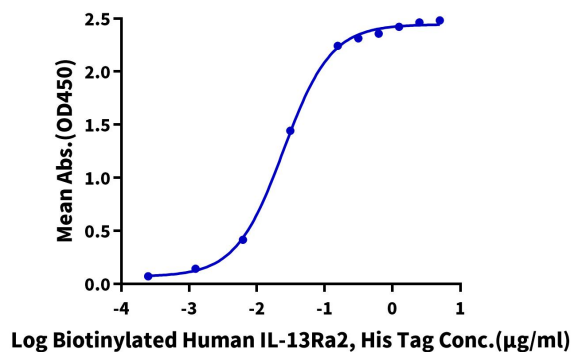
The purity of Canine IL-13 is greater than 95% as determined by SEC-HPLC.

Assay Data

ELISA Data

Canine IL-13, His Tag ELISA

0.1µg Canine IL-13, His Tag Per Well



Immobilized Canine IL-13, His Tag at 1µg/ml (100µl/well) on the plate. Dose response curve for Biotinylated Human IL-13Ra2, His Tag with the EC50 of 24.6ng/ml determined by ELISA (QC Test).