

# Human IL-10 R alpha Protein

Cat. No. IL1-HM1RA

## Description

<b>Source</b>	Recombinant Human IL-10 R alpha Protein is expressed from HEK293 with His tag at the C-terminus. It contains His22-Asn235.
<b>Accession</b>	Q13651
<b>Molecular Weight</b>	The protein has a predicted MW of 26.0 kDa. Due to glycosylation, the protein migrates to 42-60 kDa based on Bis-Tris PAGE result.
<b>Endotoxin</b>	Less than 0.1 EU per µg by the LAL method.
<b>Purity</b>	> 95% as determined by Bis-Tris PAGE > 95% as determined by HPLC

## Formulation and Storage

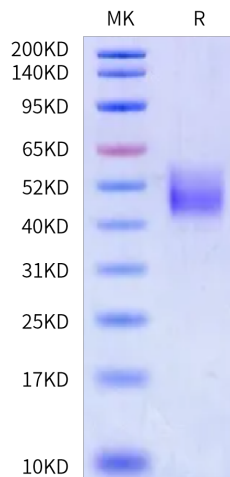
<b>Formulation</b>	Lyophilized from 0.22 µm filtered solution in PBS (pH 7.4). Normally 8% trehalose is added as protectant before lyophilization.
<b>Reconstitution</b>	Dissolve the lyophilized protein in distilled water. Please refer to the Certificate of Analysis for detailed instructions.
<b>Storage</b>	-20 to -80°C for 12 months as supplied from date of receipt. -80°C for 3 months after reconstitution. Recommend to aliquot the protein into smaller quantities for optimal storage. Please minimize freeze-thaw cycles.

## Background

The interleukin-10 receptor alpha (IL10RA) gene codes for the alpha chain of the IL-10 receptor which binds the cytokine IL-10. IL-10 is an anti-inflammatory cytokine with immunoregulatory function during the pathogenesis of many inflammatory disorders in livestock, including Johne's disease (JD). JD is a chronic enteritis in cattle caused by *Mycobacterium avium* subsp. *paratuberculosis* (MAP) and is responsible for significant economic losses to the dairy industry. Several candidate genes including IL10RA have been found to be associated with JD.

## Assay Data

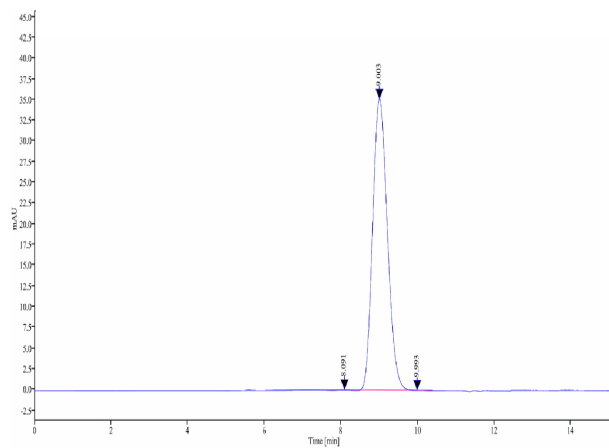
### Bis-Tris PAGE



Human IL-10 R alpha on Bis-Tris PAGE under reduced condition. The purity is greater than 95%.

### SEC-HPLC

Assay Data



The purity of Human IL-10 R alpha is greater than 95% as determined by SEC-HPLC.

# Human IL-10 R alpha Protein

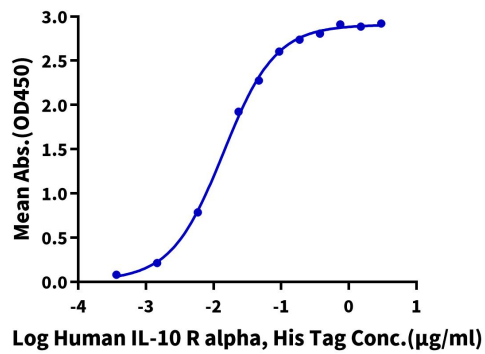
Cat. No. IL1-HM1RA

## Assay Data

### ELISA Data

#### Human IL-10 R alpha, His Tag ELISA

0.2µg Human IL-10, No Tag Per Well



Immobilized Human IL-10, No Tag (Cat. IL1-HM010) at 2µg/ml (100µl/well) on the plate. Dose response curve for Human IL-10 R alpha, His Tag with the EC50 of 14.0ng/ml determined by ELISA.