

# Human IL-1R2/IL-1 RII/CD121b Protein

Cat. No. IL1-HM2R2

## Description

<b>Source</b>	Recombinant Human IL-1R2/IL-1 RII/CD121b Protein is expressed from HEK293 with hFc tag at the C-Terminus. It contains Phe14-Glu343.
<b>Accession</b>	NP_004624.1
<b>Molecular Weight</b>	The protein has a predicted MW of 64.4 kDa. Due to glycosylation, the protein migrates to 70-80 kDa based on Bis-Tris PAGE result.
<b>Endotoxin</b>	Less than 1EU per µg by the LAL method.
<b>Purity</b>	> 95% as determined by Bis-Tris PAGE

## Formulation and Storage

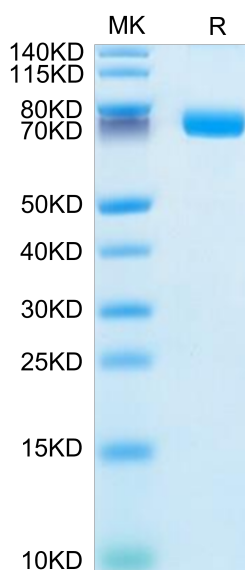
<b>Formulation</b>	Lyophilized from 0.22µm filtered solution in PBS (pH 7.4). Normally 8% trehalose is added as protectant before lyophilization.
<b>Reconstitution</b>	Centrifuge the tube before opening. Reconstituting to a concentration more than 100 µg/ml is recommended. Dissolve the lyophilized protein in distilled water.
<b>Storage</b>	-20 to -80°C for 12 months as supplied from date of receipt. -80°C for 3-6 months after reconstitution. 2-8°C for 2-7 days after reconstitution. Recommend to aliquot the protein into smaller quantities for optimal storage. Please minimize freeze-thaw cycles.

## Background

The IL-1 type II receptor (decoy RII) is a nonsignaling molecule the only established function of which is to capture IL-1 and prevent it from interacting with signaling receptor. The decoy RII is released in a regulated way from the cell surface.

## Assay Data

### Bis-Tris PAGE



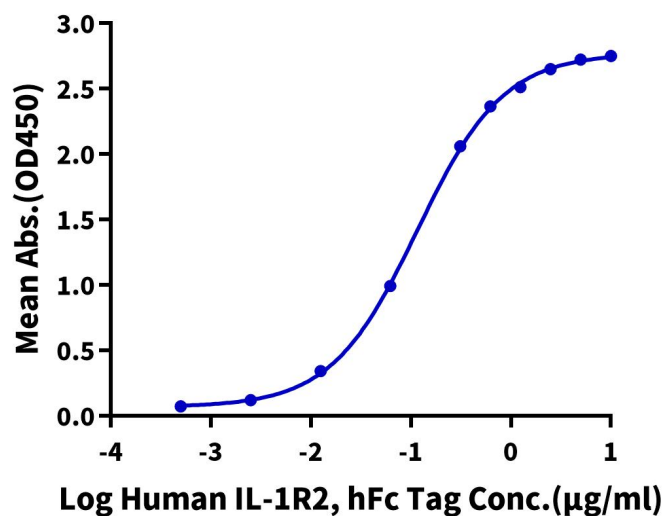
Human IL-1R2 on Bis-Tris PAGE under reduced condition. The purity is greater than 95%.

### ELISA Data

## Assay Data

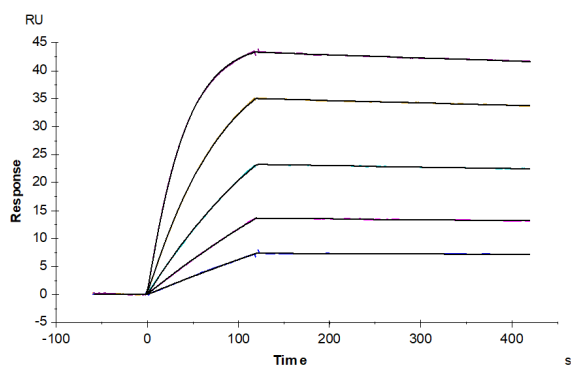
## Human IL-1R2, hFc Tag ELISA

0.5µg Human IL-1 Beta, His Tag Per Well



Immobilized Human IL-1 Beta, His Tag at 5µg/ml (100µl/Well) on the plate. Dose response curve for Human IL-1R2, hFc Tag with the EC50 of 0.12µg/ml determined by ELISA (QC Test).

## SPR Data



Human IL-1R2, hFc Tag captured on CM5 Chip via Protein A can bind Human IL-1 Beta, His Tag with an affinity constant of 0.88 nM as determined in SPR assay (Biacore T200).