

Mouse IL-1 Beta/IL-1F2 Protein

Cat. No. IL1-ME40B

Description

Source	Recombinant Mouse IL-1 Beta/IL-1F2 Protein is expressed from E.coli with His tag and Avi tag at the N-terminus. It contains Val118-Ser269.
Accession	P10749
Molecular Weight	The protein has a predicted MW of 20.30 kDa. The protein migrates to 20-25 kDa based on Bis-Tris PAGE result.
Endotoxin	Less than 1EU per µg by the LAL method.
Purity	>95% as determined by Bis-Tris PAGE >95% as determined by HPLC

Formulation and Storage

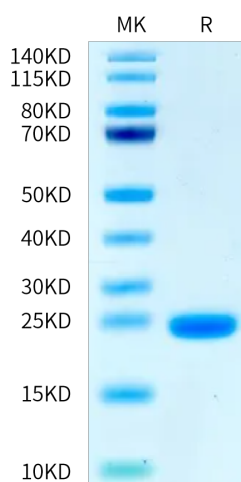
Formulation	Lyophilized from 0.22 µm filtered solution in PBS (pH 7.4). Normally 8% trehalose is added as protectant before lyophilization.
Reconstitution	Centrifuge the tube before opening. Reconstituting to a concentration more than 100 µg/ml is recommended. Dissolve the lyophilized protein in distilled water.
Storage	-20 to -80°C for 12 months as supplied from date of receipt. -80°C for 3 months after reconstitution. Recommend to aliquot the protein into smaller quantities for optimal storage. Please minimize freeze-thaw cycles.

Background

Interleukin-1 beta (IL-1 β) is induced by inflammatory signals in a broad number of immune cell types. IL-1 β (and IL-18) are the only cytokines which are processed by caspase-1 after inflammasome-mediated activation. IL-1 signaling activates innate immune cells including antigen presenting cells, and drives polarization of CD4 T cells towards T helper type (Th) 1 and Th17 cells.

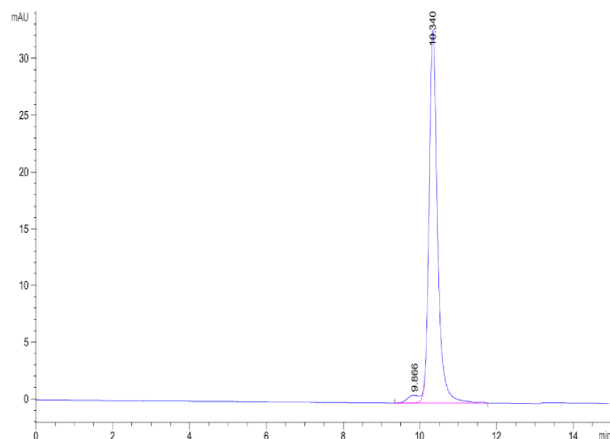
Assay Data

Bis-Tris PAGE



Mouse IL-1 Beta on Bis-Tris PAGE under reduced condition. The purity is greater than 95%.

SEC-HPLC



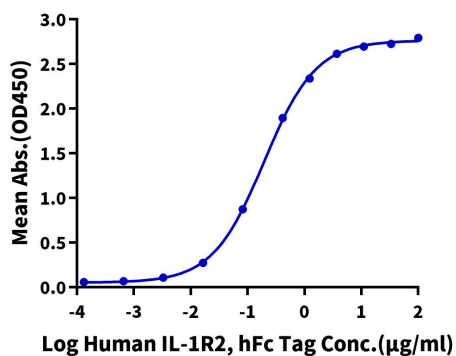
The purity of Mouse IL-1 Beta is greater than 95% as determined by SEC-HPLC.

Assay Data

ELISA Data

Mouse IL-1 Beta, His Tag ELISA

0.5µg Mouse IL-1 Beta, His Tag Per Well



Immobilized Mouse IL-1 Beta, His Tag at 5µg/ml (100µl/well) on the plate. Dose response curve for Human IL-1R2, hFc Tag with the EC50 of 0.20µg/ml determined by ELISA.