

# Cynomolgus IL-23 alpha&IL-12 beta Protein

Cat. No. IL2-CM123

## Description

<b>Source</b>	Recombinant Cynomolgus IL-23 alpha&IL-12 beta Protein is expressed from HEK293 with His tag at the N-terminus. It contains Val22-Pro189(IL-23 alpha) & Ile23-Ser328(IL-12 beta).
<b>Accession</b>	G7PIH8(IL-23 alpha)&XP_045250400.1(IL-12 beta)
<b>Molecular Weight</b>	The protein has a predicted MW of 19.52 kDa (IL-23 alpha) and 34.76 kDa (IL-12 beta). Due to glycosylation, the protein migrates to 20-25 kDa (IL-23 alpha) and 40-50 kDa (IL-12 beta) based on Bis-Tris PAGE result.
<b>Endotoxin</b>	Less than 1EU per µg by the LAL method.
<b>Purity</b>	>95% as determined by Bis-Tris PAGE >95% as determined by HPLC

## Formulation and Storage

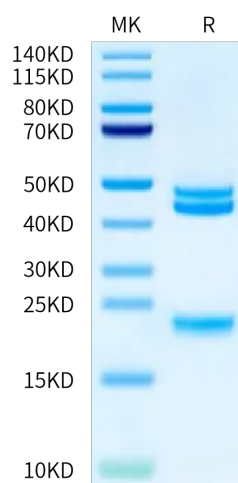
<b>Formulation</b>	Supplied as 0.22 µm filtered solution in PBS (pH 7.4).
<b>Storage</b>	Valid for 12 months from date of receipt when stored at -80°C. Recommend to aliquot the protein into smaller quantities for optimal storage. Please minimize freeze-thaw cycles.

## Background

The interleukin (IL)-12 family of cytokines, including IL12 and IL 23, play an important role in driving aberrant Th1 and Th17 immune responses in patients with Crohn's disease (CD). Targeting this pathway has opened new avenues for therapeutic intervention. The balance of proinflammatory cytokines interleukin (IL)-12 and IL-23 plays a key role in shaping the development of antitumor or protumor immunity.

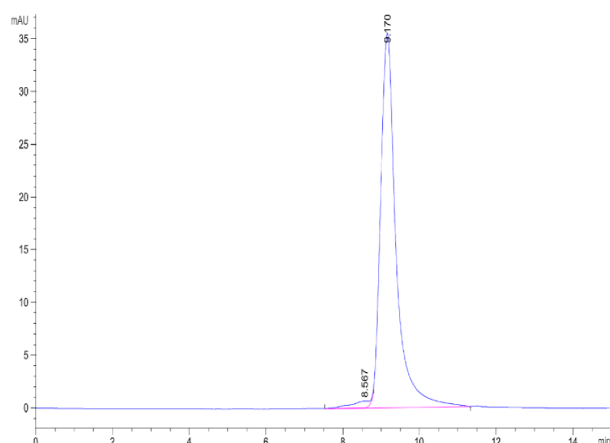
## Assay Data

### Bis-Tris PAGE



Cynomolgus IL-23 alpha&IL-12 beta on Bis-Tris PAGE under reduced condition. The purity is greater than 95%.

### SEC-HPLC



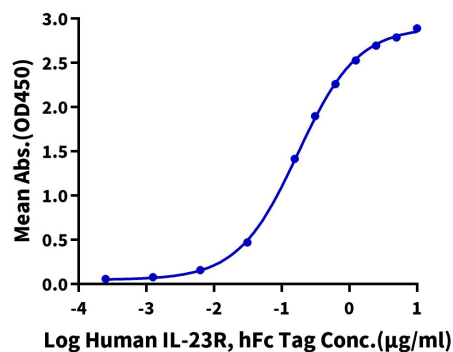
The purity of Cynomolgus IL-23 alpha&IL-12 beta is greater than 95% as determined by SEC-HPLC.

Assay Data

ELISA Data

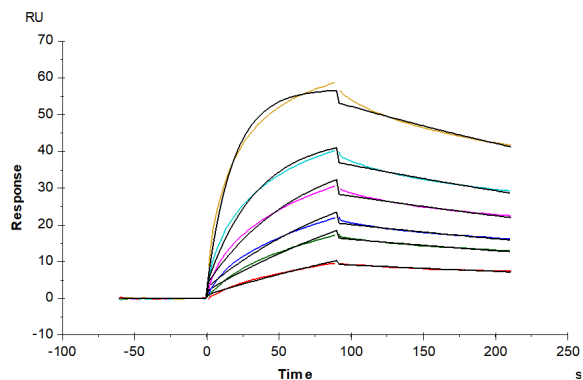
**Cynomolgus IL-23 alpha&IL-12 beta, His Tag ELISA**

0.5µg Cynomolgus IL-23 alpha&IL-12 beta, His Tag Per Well



Immobilized Cynomolgus IL-23 alpha&IL-12 beta, His Tag at 5µg/ml (100µl/well) on the plate. Dose response curve for Human IL-23R, hFc Tag with the EC50 of 0.17µg/ml determined by ELISA (QC Test).

SPR Data



Human IL-23R, hFc Tag captured on CM5 Chip via Protein A can bind Cynomolgus IL-23 alpha&IL-12 beta, His Tag with an affinity constant of 4.05 nM as determined in SPR assay (Biacore T200).