

Canine IL-22 Protein

Cat. No. IL2-DM122



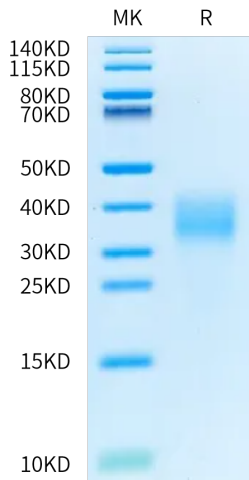
Description	
Source	Recombinant Canine IL-22 Protein is expressed from HEK293 with His tag at the C-terminus. It contains Leu34-Val179.
Accession	E2R2K7
Molecular Weight	The protein has a predicted MW of 18.43 kDa. Due to glycosylation, the protein migrates to 32-42 kDa based on Tris-Bis PAGE result.
Endotoxin	Less than 0.1 EU per µg by the LAL method.
Purity	> 95% as determined by Bis-Tris PAGE

Formulation and Storage	
Formulation	Lyophilized from 0.22 µm filtered solution in PBS (pH 7.4). Normally 8% trehalose is added as protectant before lyophilization.
Reconstitution	Centrifuge the tube before opening. Reconstituting to a concentration more than 100 µg/ml is recommended. Dissolve the lyophilized protein in distilled water.
Storage	-20 to -80°C for 12 months as supplied from date of receipt. -80°C for 3 months after reconstitution. Recommend to aliquot the protein into smaller quantities for optimal storage. Please minimize freeze-thaw cycles.

Background	
The cytokine interleukin-22 (IL-22) is a critical regulator of epithelial homeostasis. It has been implicated in multiple aspects of epithelial barrier function, including regulation of epithelial cell growth and permeability, production of mucus and antimicrobial proteins (AMPs), and complement production.	

Assay Data

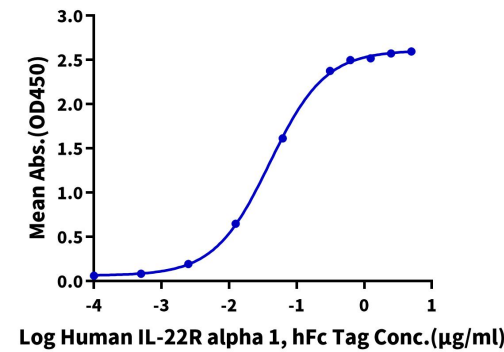
Bis-Tris PAGE



Canine IL-22 on Bis-Tris PAGE under reduced condition. The purity is greater than 95%.

ELISA Data

Canine IL-22, His Tag ELISA  
0.5µg Canine IL-22, His Tag Per Well



Immobilized Canine IL-22, His Tag at 5µg/ml(100µl/well) on the plate. Dose response curve for Human IL-22R alpha 1, hFc Tag with the EC50 of 40.0ng/ml determined by ELISA (QC Test).