

Human IL-22 Protein, Ultra Low Endotoxin



Cat. No. IL2-HM122-UL

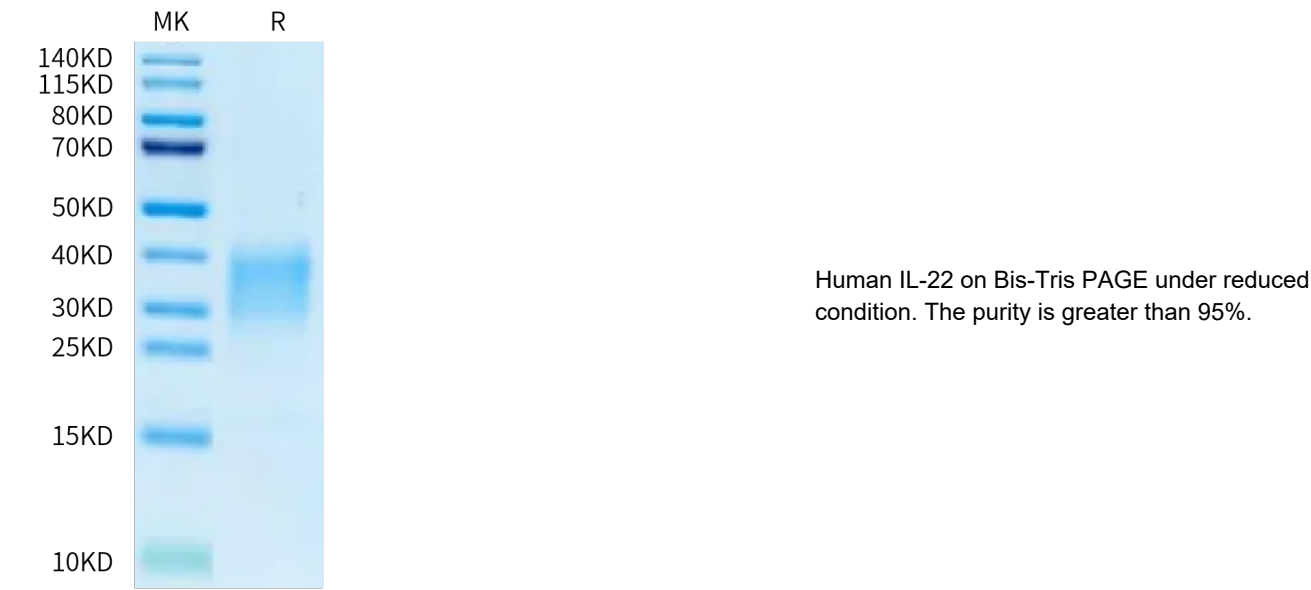
Description	
Source	Recombinant Human IL-22 Protein is expressed from HEK293 with His tag at the N-Terminus. It contains Ala34-Ile179.
Accession	Q9GZX6
Molecular Weight	The protein has a predicted MW of 17.8 kDa. Due to glycosylation, the protein migrates to 28-40 kDa based on Bis-Tris PAGE result.
Endotoxin	Less than 0.01 EU per µg by the LAL method.
Purity	> 95% as determined by Bis-Tris PAGE

Formulation and Storage	
Formulation	Lyophilized from 0.22µm filtered solution in PBS (pH 7.4). Normally 8% trehalose is added as protectant before lyophilization.
Reconstitution	Dissolve the lyophilized protein in distilled water. Please refer to the Certificate of Analysis for detailed instructions.
Storage	-20 to -80°C for 12 months as supplied from date of receipt. -80°C for 3 months after reconstitution. Recommend to aliquot the protein into smaller quantities for optimal storage. Please minimize freeze-thaw cycles.

Background	
The cytokine interleukin-22 (IL-22) is a critical regulator of epithelial homeostasis. It has been implicated in multiple aspects of epithelial barrier function, including regulation of epithelial cell growth and permeability, production of mucus and antimicrobial proteins (AMPs), and complement production.	

Assay Data

Bis-Tris PAGE

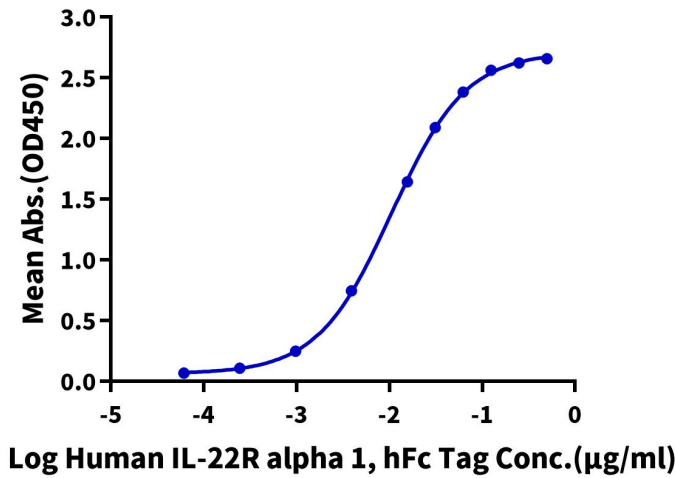


ELISA Data

Assay Data

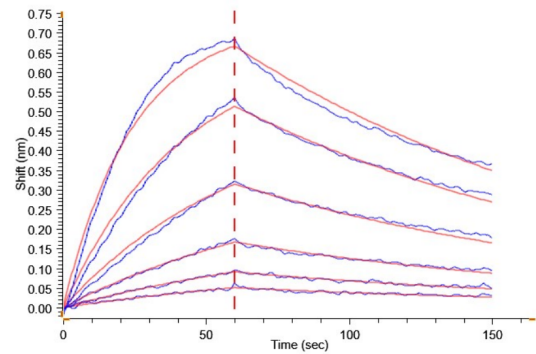
Human IL-22, His Tag ELISA

0.2µg Human IL-22, His Tag Per Well



Immobilized Human IL-22, His Tag at 2µg/ml (100µl/Well) on the plate. Dose response curve for Human IL-22R alpha 1, hFc Tag with the EC50 of 10.6ng/ml determined by ELISA.

BLI Data



Loaded Human IL-22R alpha 1, hFc Tag on ProA-Biosensor can bind Human IL-22, His Tag with an affinity constant of 42.60 nM as determined in BLI assay (Gator® Prime).