

Human IL-25/IL-17E Protein, Ultra Low Endotoxin



Cat. No. IL2-HM125-UL

Description

Source	Recombinant Human IL-25/IL-17E Protein is expressed from HEK293 with His tag at the C-Terminus.
	It contains Tyr33-Gly177.
Accession	Q9H293-1
Molecular Weight	The protein has a predicted MW of 17.6 kDa. Due to glycosylation, the protein migrates to 25-30 kDa based on Bis-Tris PAGE result.
Endotoxin	Less than 0.01 EU per µg by the LAL method.
Purity	> 95% as determined by Bis-Tris PAGE
	> 95% as determined by HPLC

Formulation and Storage

Formulation	Lyophilized from 0.22µm filtered solution in PBS (pH 7.4). Normally 8% trehalose is added as protectant before lyophilization.
Reconstitution	Dissolve the lyophilized protein in distilled water. Please refer to the Certificate of Analysis for detailed instructions.
Storage	-20 to -80°C for 12 months as supplied from date of receipt. -80°C for 3 months after reconstitution. Recommend to aliquot the protein into smaller quantities for optimal storage. Please minimize freeze-thaw cycles.

Background

IL-25, also known as IL-17E, is a member of the IL-17 cytokine family mostly produced by epithelial cells and innate immune cells. After binding to the IL-17RB/IL-17RA complex, IL-25 induces downstream signaling responses in epithelial cells and type 2 lymphocytes, which initiates, propagates, and sustains type 2 immunity. The function of IL-25 in allergic diseases such as asthma has been well established, and now also is extended to diseases such as inflammatory bowel disease and cancer.

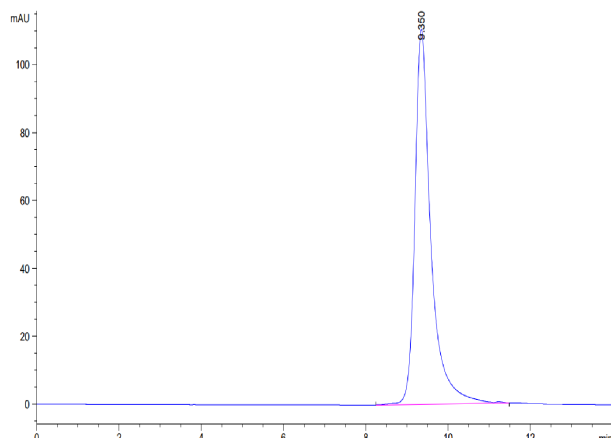
Assay Data

Bis-Tris PAGE



Human IL-25 on Bis-Tris PAGE under reduced condition. The purity is greater than 95%.

SEC-HPLC



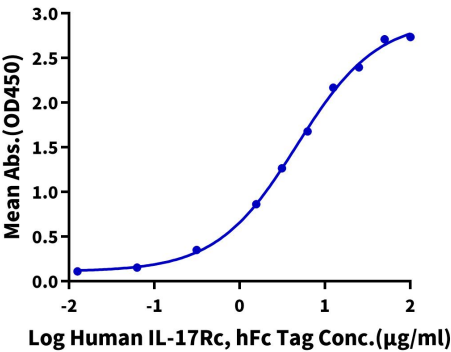
The purity of Human IL-25 is greater than 95% as determined by SEC-HPLC.

Assay Data

ELISA Data

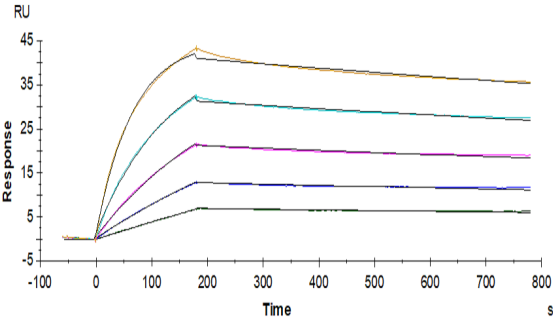
Human IL-25, His Tag ELISA

0.5µg Human IL-25, His Tag Per Well



Immobilized Human IL-25, His Tag at 5µg/ml (100µl/well) on the plate. Dose response curve for Human IL-17Rc, hFc Tag with the EC50 of 4.64µg/ml determined by ELISA (QC Test).

SPR Data



Human IL-17RB, His Tag immobilized on CM5 Chip can bind Human IL-25, His Tag with an affinity constant of 0.81nM as determined in SPR assay (Biacore T200).