

# Human IL-27 Protein

Cat. No. IL2-HM127

## Description

<b>Source</b>	Recombinant Human IL-27 Protein is expressed from CHO with His tag at the C-Terminus. It contains Arg21-Lys229(IL-27B)&Phe29-Pro243(IL-27A).
<b>Accession</b>	Q14213(IL-27B)&Q8NEV9(IL-27A)
<b>Molecular Weight</b>	The protein has a predicted MW of 50.6 kDa. Due to glycosylation, the protein migrates to 54-64 kDa based on Bis-Tris PAGE result.
<b>Endotoxin</b>	Less than 1EU per µg by the LAL method.
<b>Purity</b>	> 95% as determined by Bis-Tris PAGE

## Formulation and Storage

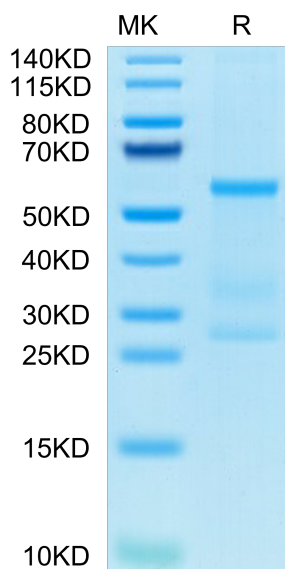
<b>Formulation</b>	Supplied as 0.22µm filtered solution in PBS, 200mM L-arginine (pH 7.4).
<b>Storage</b>	Valid for 12 months from date of receipt when stored at -80°C. Recommend to aliquot the protein into smaller quantities for optimal storage. Please minimize freeze-thaw cycles.

## Background

Interleukin (IL)-27, a member of the IL-6/IL-12 family, has an important role in modulating inflammation in partnership with innate and adaptive immune cells.

## Assay Data

### Bis-Tris PAGE

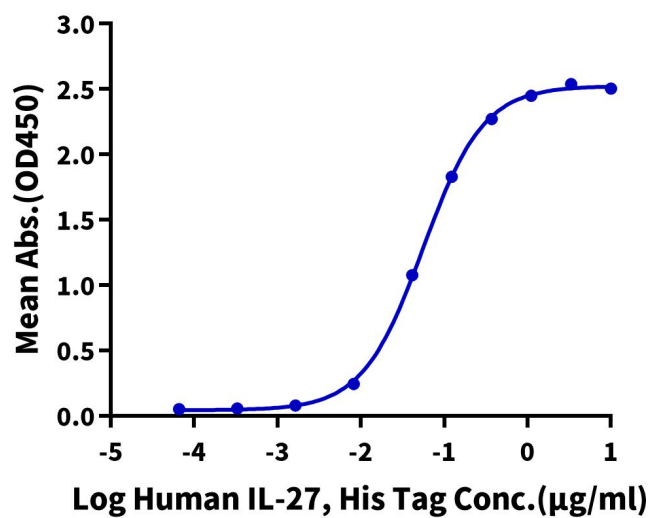


Human IL-27 on Bis-Tris PAGE under reduced condition. The purity is greater than 95%.

### ELISA Data

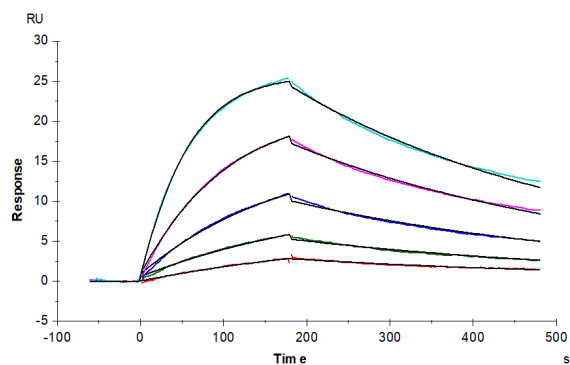
## Assay Data

## Human IL-27, His Tag ELISA

0.5 $\mu$ g Human IL-27 RA, hFc Tag Per Well

Immobilized Human IL-27 RA, hFc Tag at 5 $\mu$ g/ml (100 $\mu$ l/well) on the plate. Dose response curve for Human IL-27, His Tag with the EC50 of 55.9ng/ml determined by ELISA (QC Test).

## SPR Data



Human IL-27 RA, hFc Tag captured on CM5 Chip via Protein A can bind Human IL-27, His Tag with an affinity constant of 3.58 nM as determined in SPR assay (Biacore T200).