

Human IL-27 Protein

Cat. No. IL2-HM127

Description

Source	Recombinant Human IL-27 Protein is expressed from CHO with His tag at the C-Terminus. It contains Arg21-Lys229(IL-27B)&Phe29-Pro243(IL-27A).
Accession	Q14213(IL-27B)&Q8NEV9(IL-27A)
Molecular Weight	The protein has a predicted MW of 50.6 kDa. Due to glycosylation, the protein migrates to 54-64 kDa based on Tris-Bis PAGE result.
Endotoxin	Less than 1EU per μg by the LAL method.
Purity	> 95% as determined by Tris-Bis PAGE

Formulation and Storage

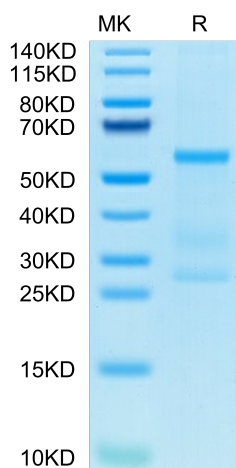
Formulation	Lyophilized from 0.22 μm filtered solution in PBS, 200mM L-arginine (pH 7.4). Normally 8% trehalose is added as protectant before lyophilization.
Reconstitution	Centrifuge the tube before opening. Reconstituting to a concentration more than 100 $\mu\text{g}/\text{ml}$ is recommended. Dissolve the lyophilized protein in distilled water.
Storage	-20 to -80°C for 12 months as supplied from date of receipt. -20 to -80°C for 3-6 months in unopened state after reconstitution. 2-8°C for 2-7 days after reconstitution. Recommend to aliquot the protein into smaller quantities for optimal storage. Please minimize freeze-thaw cycles.

Background

Interleukin (IL)-27, a member of the IL-6/IL-12 family, has an important role in modulating inflammation in partnership with innate and adaptive immune cells.

Assay Data

Tris-Bis PAGE

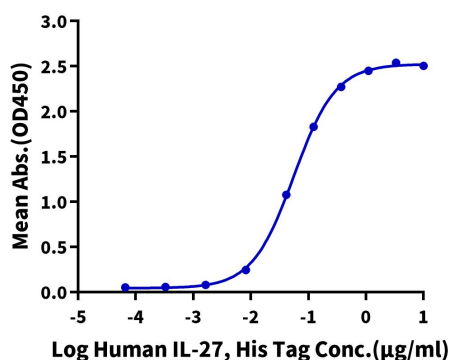


Human IL-27 on Tris-Bis PAGE under reduced condition. The purity is greater than 95%.

ELISA Data

Human IL-27, His Tag ELISA

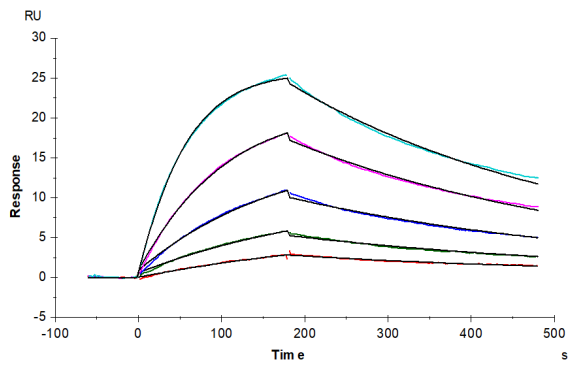
0.5 μg Human IL-27 RA, hFc Tag Per Well



Immobilized Human IL-27 RA, hFc Tag at 5 $\mu\text{g}/\text{ml}$ (100 $\mu\text{l}/\text{well}$) on the plate. Dose response curve for Human IL-27, His Tag with the EC50 of 55.9ng/ml determined by ELISA (QC Test).

Assay Data

SPR Data



Human IL-27 RA, hFc Tag captured on CM5 Chip via Protein A can bind Human IL-27, His Tag with an affinity constant of 3.58 nM as determined in SPR assay (Biacore T200).