

Human IL-23 alpha&IL-12 beta Protein, Ultra Low Endotoxin



Cat. No. IL2-HM1AB-UL

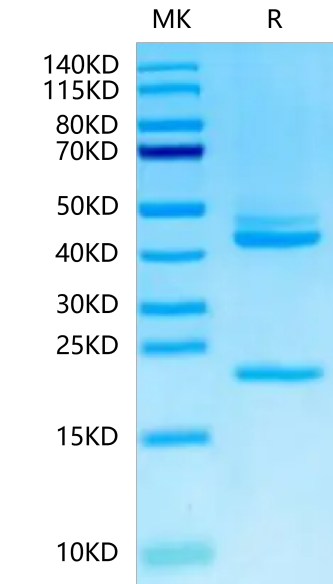
Description	
Source	Recombinant Human IL-23 alpha&IL-12 beta Protein is expressed from HEK293 with His tag at the C-terminus of IL-23 alpha. It contains Arg20-Pro189 (IL-23 alpha) and Ile23-Ser328 (IL-12 beta).
Accession	Q9NPF7(IL-23 alpha)&P29460 (IL-12 beta)
Molecular Weight	The protein has a predicted MW of 19.77 kDa (IL-23 alpha) and 34.7 kDa (IL-12 beta). Due to glycosylation, the protein migrates to 23 kDa (IL-23 alpha) and 40-50 kDa (IL-12 beta) based on Bis-Tris PAGE result.
Endotoxin	Less than 0.01 EU per µg by the LAL method.
Purity	> 95% as determined by Bis-Tris PAGE > 95% as determined by HPLC

Formulation and Storage	
Formulation	Lyophilized from 0.22 µm filtered solution in PBS (pH 7.4). Normally 8% trehalose is added as protectant before lyophilization.
Reconstitution	Dissolve the lyophilized protein in distilled water. Please refer to the Certificate of Analysis for detailed instructions.
Storage	-20 to -80°C for 12 months as supplied from date of receipt.-80°C for 3 months after reconstitution.Recommend to aliquot the protein into smaller quantities for optimal storage. Please minimize freeze-thaw cycles.

Background	
The interleukin (IL)-12 family of cytokines, including IL12 and IL 23, play an important role in driving aberrant Th1 and Th17 immune responses in patients with Crohn's disease (CD). Targeting this pathway has opened new avenues for therapeutic intervention. The balance of proinflammatory cytokines interleukin (IL)-12 and IL-23 plays a key role in shaping the development of antitumor or protumor immunity.	

Assay Data

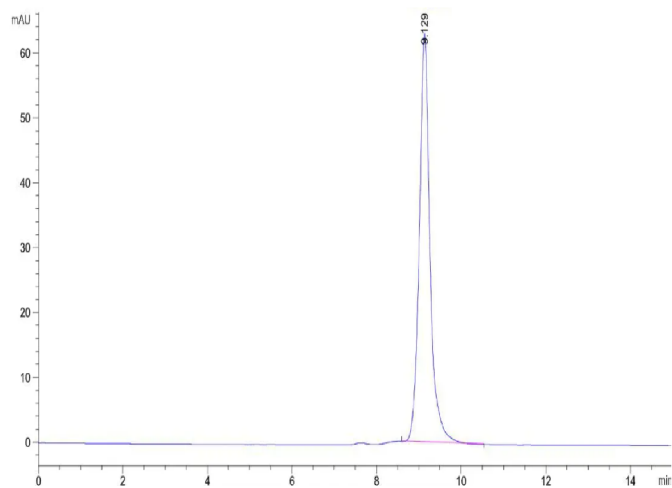
Bis-Tris PAGE



Human IL-23 alpha&IL-12 beta on Bis-Tris PAGE under reduced condition. The purity is greater than 95%.

SEC-HPLC

Assay Data

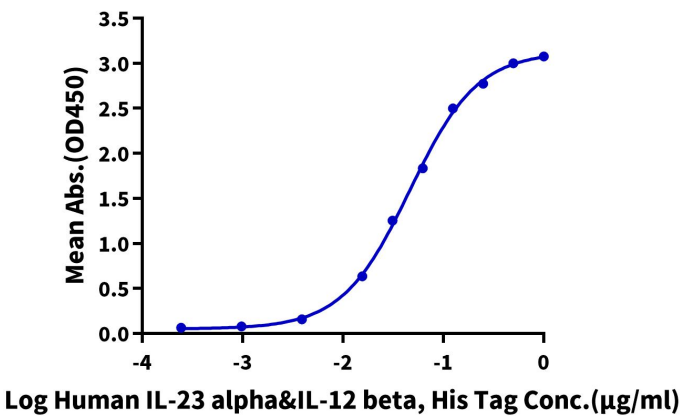


The purity of Human IL-23 alpha&IL-12 beta is greater than 95% as determined by SEC-HPLC.

ELISA Data

Human IL-23 alpha&IL-12 beta, His Tag ELISA

0.2µg Human IL-23R, hFc Tag Per Well

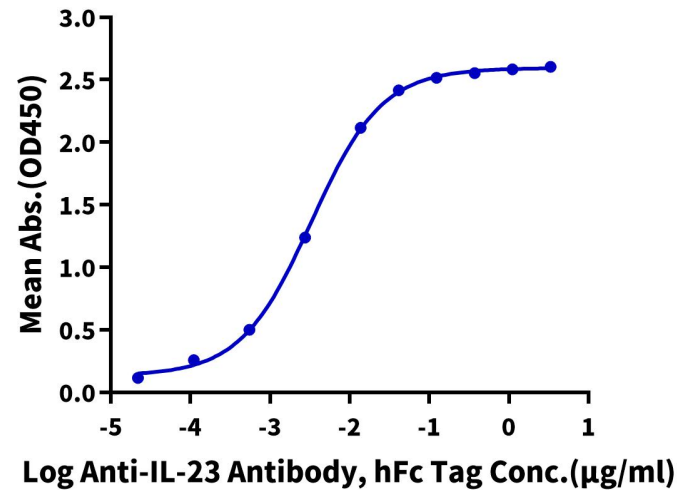


Immobilized Human IL-23R, hFc Tag at 2 µg/ml (100 µl/well) on the plate. Dose response curve for Human IL-23 alpha&IL-12 beta, His Tag with the EC50 of 46.4ng/ml determined by ELISA (QC Test).

ELISA Data

Human IL-23 alpha&IL-12 beta, His Tag ELISA

0.1µg Human IL-23 alpha&IL-12 beta, His Tag Per Well



Immobilized Human IL-23 alpha&IL-12 beta, His Tag at 1 µg/ml (100 µl/well) on the plate. Dose response curve for Anti-IL-23 Antibody, hFc Tag with the EC50 of 3.3 ng/ml determined by ELISA.