

# Human IL-25/IL-17E Protein

Cat. No. IL2-HM225

## Description

<b>Source</b>	Recombinant Human IL-25/IL-17E Protein is expressed from HEK293 with hFc (IgG1) tag at the C-terminus. It contains Tyr33-Gly177.
<b>Accession</b>	Q9H293-1
<b>Molecular Weight</b>	The protein has a predicted MW of 42.68 kDa. Due to glycosylation, the protein migrates to 50-65 kDa based on Bis-Tris PAGE result.
<b>Endotoxin</b>	Less than 0.1 EU per $\mu\text{g}$ by the LAL method.
<b>Purity</b>	> 95% as determined by Bis-Tris PAGE > 95% as determined by HPLC

## Formulation and Storage

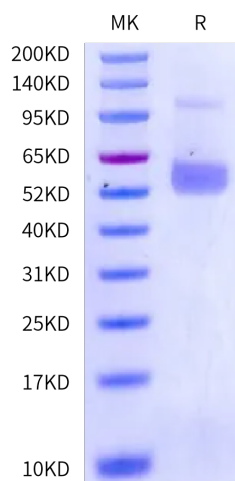
<b>Formulation</b>	Supplied as 0.22 $\mu\text{m}$ filtered solution in PBS (pH 7.4).
<b>Storage</b>	Valid for 12 months from date of receipt when stored at $-80^{\circ}\text{C}$ . Recommend to aliquot the protein into smaller quantities for optimal storage. Please minimize freeze-thaw cycles.

## Background

IL-25, also known as IL-17E, is a member of the IL-17 cytokine family mostly produced by epithelial cells and innate immune cells. After binding to the IL-17RB/IL-17RA complex, IL-25 induces downstream signaling responses in epithelial cells and type 2 lymphocytes, which initiates, propagates, and sustains type 2 immunity. The function of IL-25 in allergic diseases such as asthma has been well established, and now also is extended to diseases such as inflammatory bowel disease and cancer.

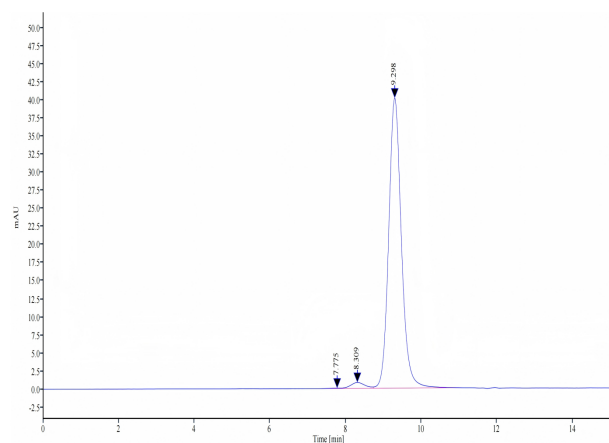
## Assay Data

### Bis-Tris PAGE



Human IL-25 on Bis-Tris PAGE under reduced condition. The purity is greater than 95%.

### SEC-HPLC



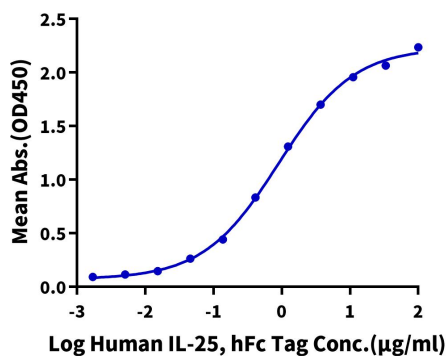
The purity of Human IL-25 is greater than 95% as determined by SEC-HPLC.

Assay Data

ELISA Data

**Human IL-25, hFc Tag ELISA**

0.2µg Human IL-17RB, His Tag Per Well

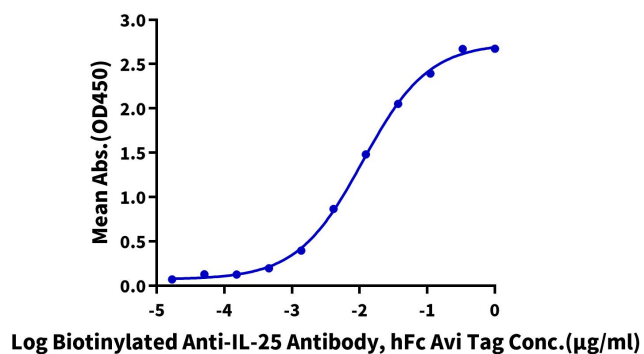


Immobilized Human IL-17RB, His Tag (Cat.IL1-HM1RB) at 2µg/ml (100µl/well) on the plate. Dose response curve for Human IL-25, hFc Tag with the EC50 of 0.90µg/ml determined by ELISA.

ELISA Data

**Human IL-25, hFc Tag ELISA**

0.05µg Human IL-25, hFc Tag Per Well



Immobilized Human IL-25, hFc Tag at 0.5µg/ml (100µl/well) on the plate. Dose response curve for Biotinylated Anti-IL-25 Antibody, hFc Avi Tag with the EC50 of 11.1ng/ml determined by ELISA.