

Biotinylated Human IL-25/IL-17E Protein

Cat. No. IL2-HM425B

Description

| | |
|-------------------------|---|
| Source | Recombinant Biotinylated Human IL-25/IL-17E Protein is expressed from HEK293 with His tag and Avi tag at the C-Terminus. It contains Tyr33-Gly177. |
| Accession | Q9H293-1 |
| Molecular Weight | The protein has a predicted MW of 19.24 kDa. Due to glycosylation, the protein migrates to 25-35 kDa based on Bis-Tris PAGE result. |
| Endotoxin | Less than 1EU per µg by the LAL method. |
| Purity | > 95% as determined by Bis-Tris PAGE > 95% as determined by HPLC |

Formulation and Storage

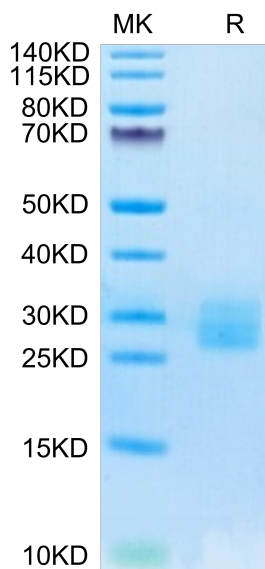
| | |
|--------------------|--|
| Formulation | Supplied as 0.22µm filtered solution in PBS (pH 7.4). |
| Storage | Valid for 12 months from date of receipt when stored at -80°C. Recommend to aliquot the protein into smaller quantities for optimal storage. Please minimize freeze-thaw cycles. |

Background

IL-25, also known as IL-17E, is a member of the IL-17 cytokine family mostly produced by epithelial cells and innate immune cells. After binding to the IL-17RB/IL-17RA complex, IL-25 induces downstream signaling responses in epithelial cells and type 2 lymphocytes, which initiates, propagates, and sustains type 2 immunity. The function of IL-25 in allergic diseases such as asthma has been well established, and now also is extended to diseases such as inflammatory bowel disease and cancer.

Assay Data

Bis-Tris PAGE



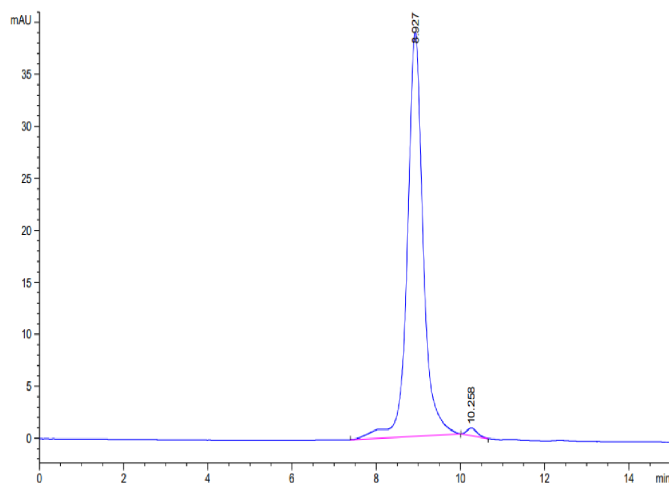
Biotinylated Human IL-25 on Bis-Tris PAGE under reduced condition. The purity is greater than 95%.

SEC-HPLC

Biotinylated Human IL-25/IL-17E Protein

Cat. No. IL2-HM425B

Assay Data

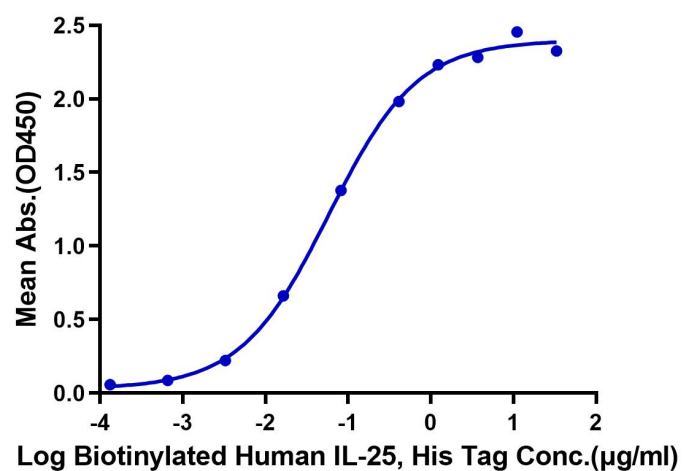


The purity of Biotinylated Human IL-25 is greater than 95% as determined by SEC-HPLC.

ELISA Data

Biotinylated Human IL-25, His Tag ELISA

0.5µg Human IL-17RB, His Tag Per Well



Immobilized Human IL-17RB, His Tag at 5µg/ml (100µl/well) on the plate. Dose response curve for Biotinylated Human IL-25, His Tag with the EC50 of 58.5ng/ml determined by ELISA.