

# Mouse IL-22 Protein

Cat. No. IL2-ME122

## Description

<b>Source</b>	Recombinant Mouse IL-22 Protein is expressed from E.coli with His tag at the N-terminus. It contains Leu34-Val179.
<b>Accession</b>	Q9JJY9
<b>Molecular Weight</b>	The protein has a predicted MW of 17.73 kDa same as Bis-Tris PAGE result.
<b>Endotoxin</b>	Less than 1EU per µg by the LAL method.
<b>Purity</b>	> 95% as determined by Bis-Tris PAGE > 95% as determined by HPLC

## Formulation and Storage

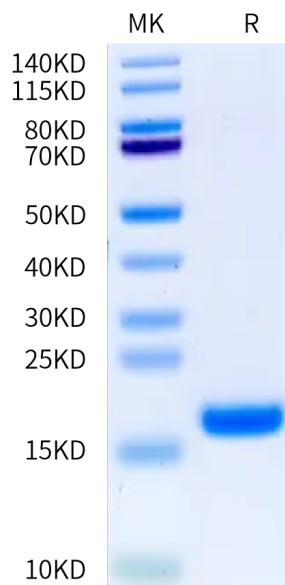
<b>Formulation</b>	Lyophilized from 0.22 µm filtered solution in PBS (pH 7.4). Normally 8% trehalose is added as protectant before lyophilization.
<b>Reconstitution</b>	Centrifuge the tube before opening. Reconstituting to a concentration more than 100 µg/ml is recommended. Dissolve the lyophilized protein in distilled water.
<b>Storage</b>	-20 to -80°C for 12 months as supplied from date of receipt. -80°C for 3 months after reconstitution. Recommend to aliquot the protein into smaller quantities for optimal storage. Please minimize freeze-thaw cycles.

## Background

The cytokine interleukin-22 (IL-22) is a critical regulator of epithelial homeostasis. It has been implicated in multiple aspects of epithelial barrier function, including regulation of epithelial cell growth and permeability, production of mucus and antimicrobial proteins (AMPs), and complement production.

## Assay Data

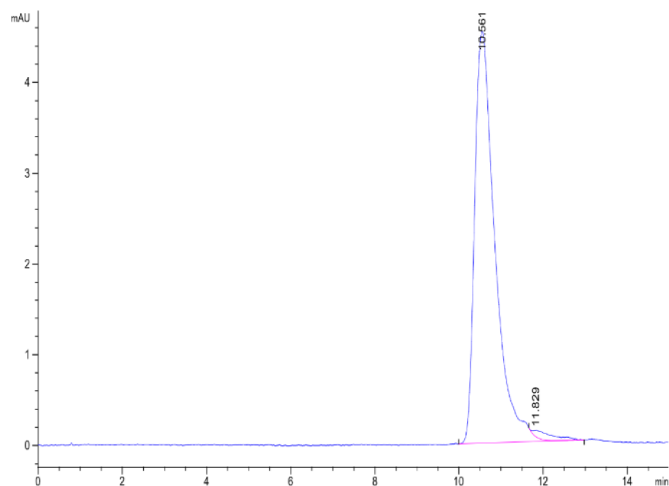
### Bis-Tris PAGE



Mouse IL-22 Protein on Bis-Tris PAGE under reduced condition. The purity is greater than 95%.

### SEC-HPLC

Assay Data

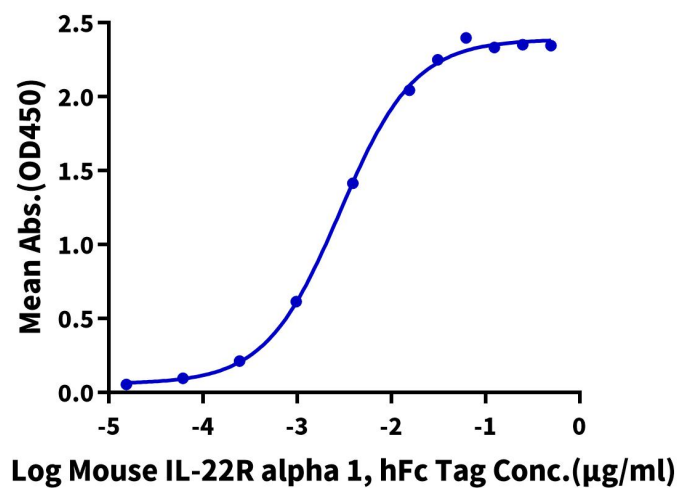


The purity of Mouse IL-22 is greater than 95% as determined by SEC-HPLC.

ELISA Data

Mouse IL-22, His Tag ELISA

0.2µg Mouse IL-22, His Tag Per Well



Immobilized Mouse IL-22, His Tag at 2µg/ml (100µl/well) on the plate. Dose response curve for Mouse IL-22R alpha 1, hFc Tag with the EC50 of 2.9ng/ml determined by ELISA.