

Mouse IL-22 Protein

Cat. No. IL2-MM122

Description

Source	Recombinant Mouse IL-22 Protein is expressed from HEK293 with His tag at the N-terminus. It contains Leu34-Val179.
Accession	Q9JJY9
Molecular Weight	The protein has a predicted MW of 17.73 kDa. Due to glycosylation, the protein migrates to 30-45 kDa based on Bis-Tris PAGE result.
Endotoxin	Less than 1EU per µg by the LAL method.
Purity	> 95% as determined by Bis-Tris PAGE > 95% as determined by HPLC

Formulation and Storage

Formulation	Lyophilized from 0.22 µm filtered solution in PBS (pH 7.4). Normally 8% trehalose is added as protectant before lyophilization.
Reconstitution	Centrifuge the tube before opening. Reconstituting to a concentration more than 100 µg/ml is recommended. Dissolve the lyophilized protein in distilled water.
Storage	-20 to -80°C for 12 months as supplied from date of receipt. -80°C for 3 months after reconstitution. Recommend to aliquot the protein into smaller quantities for optimal storage. Please minimize freeze-thaw cycles.

Background

The cytokine interleukin-22 (IL-22) is a critical regulator of epithelial homeostasis. It has been implicated in multiple aspects of epithelial barrier function, including regulation of epithelial cell growth and permeability, production of mucus and antimicrobial proteins (AMPs), and complement production.

Assay Data

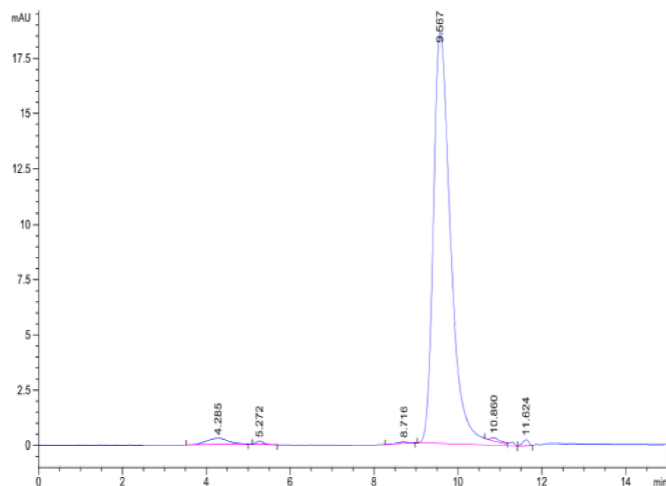
Bis-Tris PAGE



Mouse IL-22 on Bis-Tris PAGE under reduced condition. The purity is greater than 95%.

SEC-HPLC

Assay Data

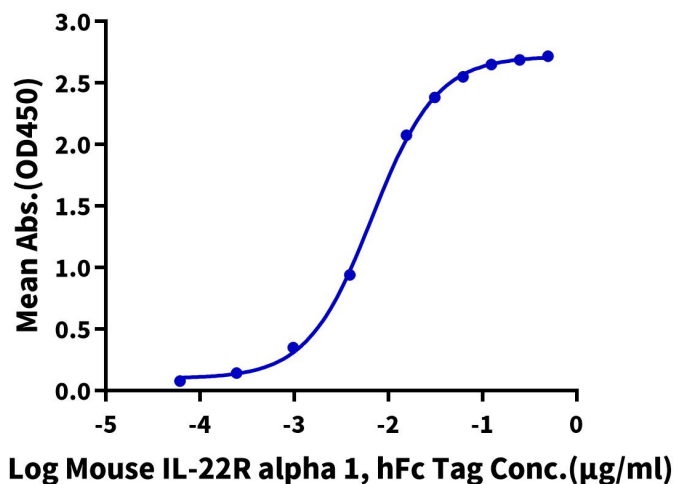


The purity of Mouse IL-22 is greater than 95% as determined by SEC-HPLC.

ELISA Data

Mouse IL-22, His Tag ELISA

0.2µg Mouse IL-22, His Tag Per Well



Immobilized Mouse IL-22, His Tag at 2µg/ml (100µl/well) on the plate. Dose response curve for Mouse IL-22R alpha 1, hFc Tag with the EC50 of 6.7ng/ml determined by ELISA (QC Test).