

Mouse IL-25/IL-17E Protein, Ultra Low Endotoxin

Cat. No. IL2-MM125-UL

Description

| | |
|-------------------------|---|
| Source | Recombinant Mouse IL-25/IL-17E Protein is expressed from HEK293 with His tag at the C-terminus. It contains Val17-Ala169. |
| Accession | Q8VHH8 |
| Molecular Weight | The protein has a predicted MW of 19.08 kDa. Due to glycosylation, the protein migrates to 27-35 kDa based on Bis-Tris PAGE result. |
| Endotoxin | Less than 0.01 EU per µg by the LAL method. |
| Purity | > 95% as determined by Bis-Tris PAGE > 95% as determined by HPLC |

Formulation and Storage

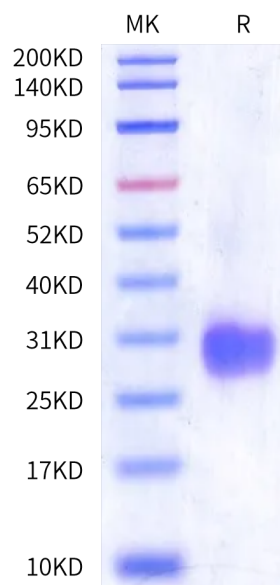
| | |
|-----------------------|---|
| Formulation | Lyophilized from 0.22 µm filtered solution in PBS (pH 7.4). Normally 8% trehalose is added as protectant before lyophilization. |
| Reconstitution | Dissolve the lyophilized protein in distilled water. Please refer to the Certificate of Analysis for detailed instructions. |
| Storage | -20 to -80°C for 12 months as supplied from date of receipt. -80°C for 3 months after reconstitution. Recommend to aliquot the protein into smaller quantities for optimal storage. Please minimize freeze-thaw cycles. |

Background

IL-25, also known as IL-17E, is a member of the IL-17 cytokine family mostly produced by epithelial cells and innate immune cells. After binding to the IL-17RB/IL-17RA complex, IL-25 induces downstream signaling responses in epithelial cells and type 2 lymphocytes, which initiates, propagates, and sustains type 2 immunity. The function of IL-25 in allergic diseases such as asthma has been well established, and now also is extended to diseases such as inflammatory bowel disease and cancer.

Assay Data

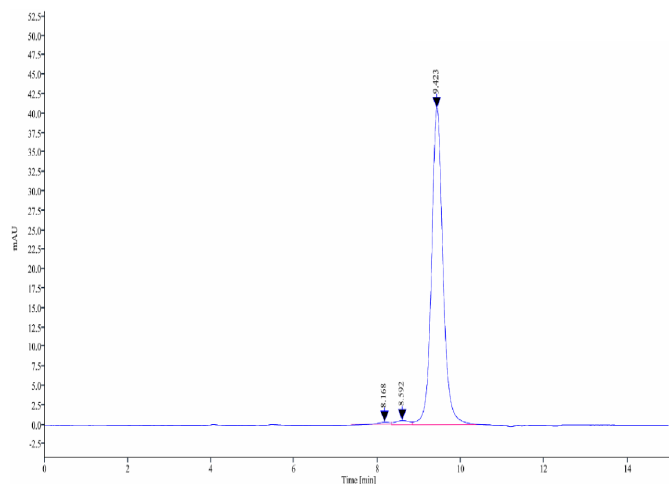
Bis-Tris PAGE



Mouse IL-25 on Bis-Tris PAGE under reduced condition. The purity is greater than 95%.

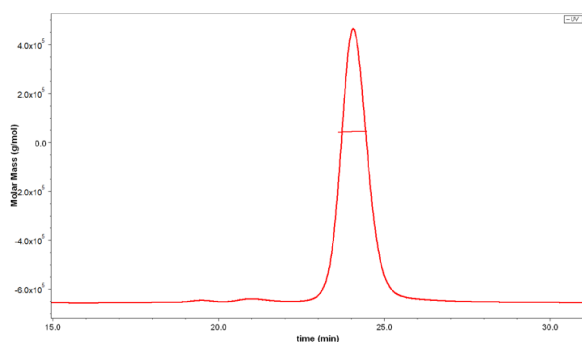
SEC-HPLC

Assay Data



The purity of Mouse IL-25 is greater than 95% as determined by SEC-HPLC.

SEC-MALS

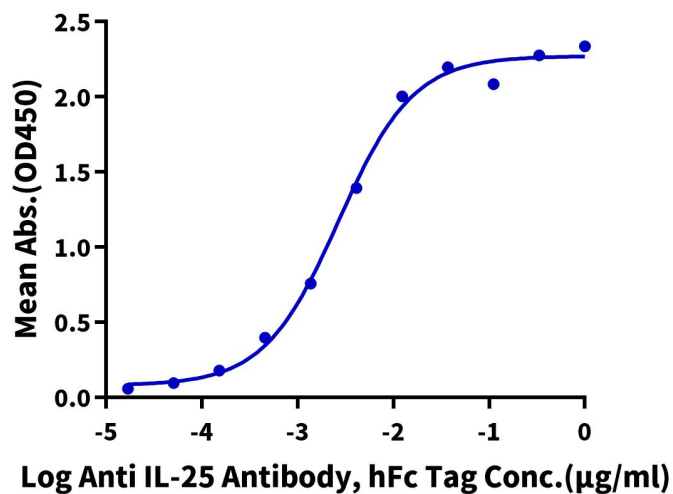


The purity of Mouse IL-25 is greater than 95% and the molecular weight of this protein is around 40-60 kDa as determined by SEC-MALS.

ELISA Data

Mouse IL-25, His Tag ELISA

0.05µg Mouse IL-25, His Tag Per Well



Immobilized Mouse IL-25, His Tag at 0.5µg/ml (100µl/well) on the plate. Dose response curve for Anti IL-25 Antibody, hFc Tag with the EC₅₀ of 2.7ng/ml determined by ELISA.