

Mouse IL-25/IL-17E Protein

Cat. No. IL2-MM125

Description

Source	Recombinant Mouse IL-25/IL-17E Protein is expressed from HEK293 with His tag at the C-terminus. It contains Val17-Ala169.
Accession	Q8VHH8
Molecular Weight	The protein has a predicted MW of 19.08 kDa. Due to glycosylation, the protein migrates to 27-35 kDa based on Bis-Tris PAGE result.
Endotoxin	Less than 0.1 EU per μg by the LAL method.
Purity	> 95% as determined by Bis-Tris PAGE > 95% as determined by HPLC

Formulation and Storage

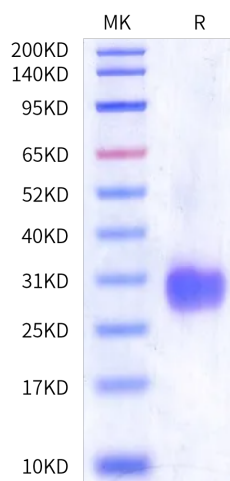
Formulation	Lyophilized from 0.22 μm filtered solution in PBS (pH 7.4). Normally 8% trehalose is added as protectant before lyophilization.
Reconstitution	Dissolve the lyophilized protein in distilled water. Please refer to the Certificate of Analysis for detailed instructions.
Storage	-20 to -80°C for 12 months as supplied from date of receipt. -80°C for 3 months after reconstitution. Recommend to aliquot the protein into smaller quantities for optimal storage. Please minimize freeze-thaw cycles.

Background

IL-25, also known as IL-17E, is a member of the IL-17 cytokine family mostly produced by epithelial cells and innate immune cells. After binding to the IL-17RB/IL-17RA complex, IL-25 induces downstream signaling responses in epithelial cells and type 2 lymphocytes, which initiates, propagates, and sustains type 2 immunity. The function of IL-25 in allergic diseases such as asthma has been well established, and now also is extended to diseases such as inflammatory bowel disease and cancer.

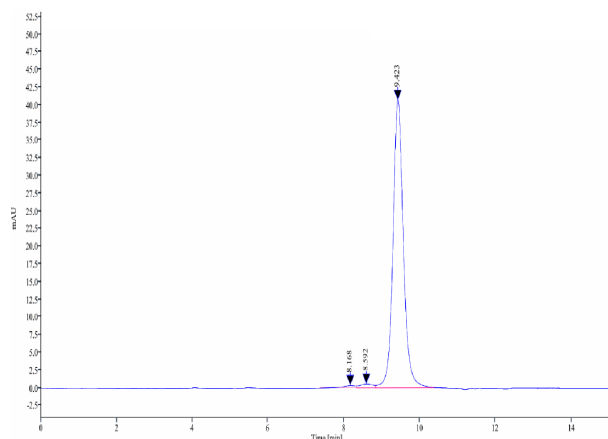
Assay Data

Bis-Tris PAGE



Mouse IL-25 on Bis-Tris PAGE under reduced condition. The purity is greater than 95%.

SEC-HPLC



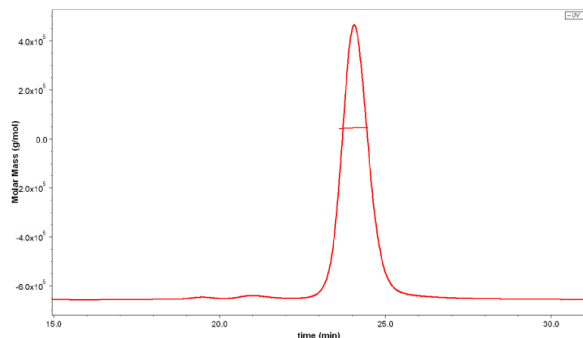
The purity of Mouse IL-25 is greater than 95% as determined by SEC-HPLC.

Mouse IL-25/IL-17E Protein

Cat. No. IL2-MM125

Assay Data

SEC-MALS

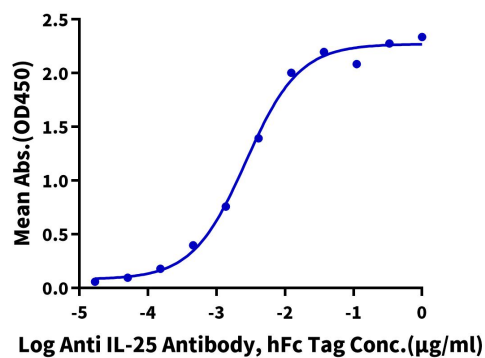


The purity of Mouse IL-25 is greater than 95% and the molecular weight of this protein is around 40-60 kDa as determined by SEC-MALS.

ELISA Data

Mouse IL-25, His Tag ELISA

0.05 μ g Mouse IL-25, His Tag Per Well



Immobilized Mouse IL-25, His Tag at 0.5 μ g/ml (100 μ l/well) on the plate. Dose response curve for Anti IL-25 Antibody, hFc Tag with the EC50 of 2.7ng/ml determined by ELISA.